

ALLIANCE, NEBRASKA

AL-16 (FAA)

21252

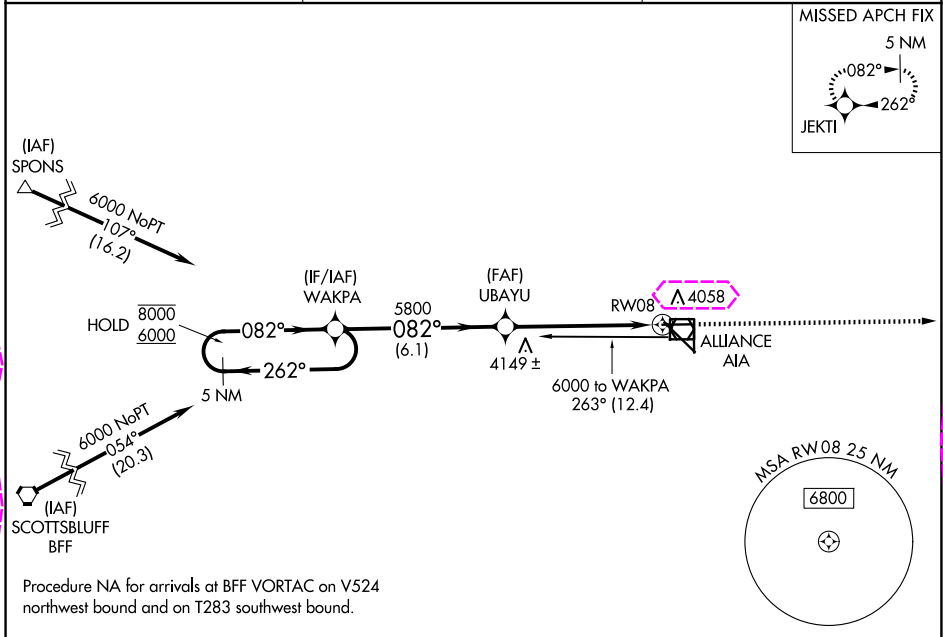
APP CRS	Rwy Idg	6190
082°	TDZE	3931
	Apt Elev	3931

# RNAV (GPS) RWY 8

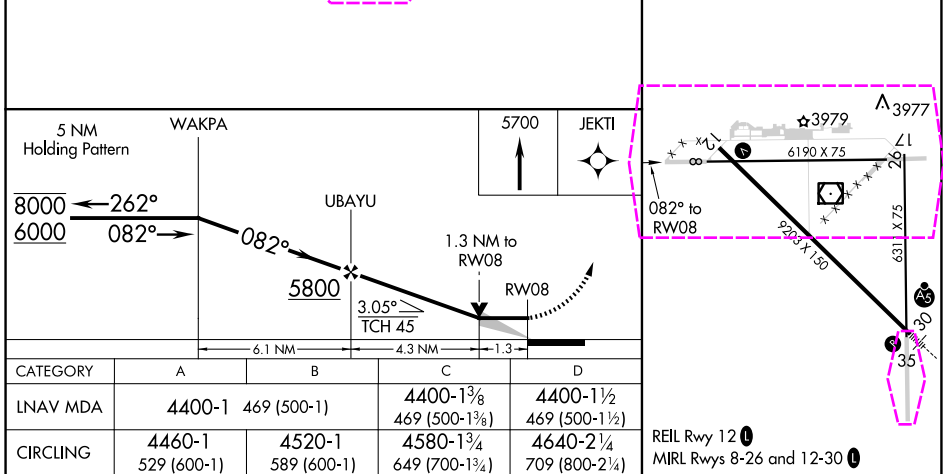
ALLIANCE MUNI (AIA)

RNP APCH.	MISSED APPROACH: Climb to 5700 direct JEKTI and hold.
-----------	---

ASOS 135.075	DENVER CENTER 127.95 338.2	UNICOM 123.0 (CTAF) 1
-----------------	-------------------------------	--------------------------



ELEV 3931	TDZE 3931
-----------	-----------



ALLIANCE, NEBRASKA  
Orig-B 09SEP21

42°03'N-102°48'W

ALLIANCE MUNI (AIA)  
RNAV (GPS) RWY 8

ALLIANCE, NEBRASKA

AL-16 (FAA)

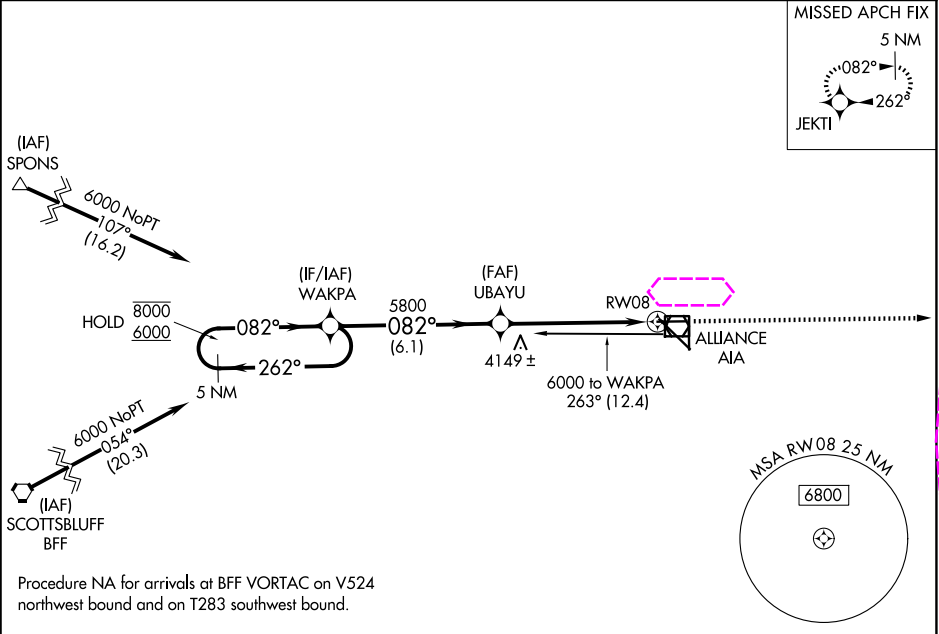
25219

APP CRS	Rwy Ldg	6190
082°	TDZE	3931
	Apt Elev	3931

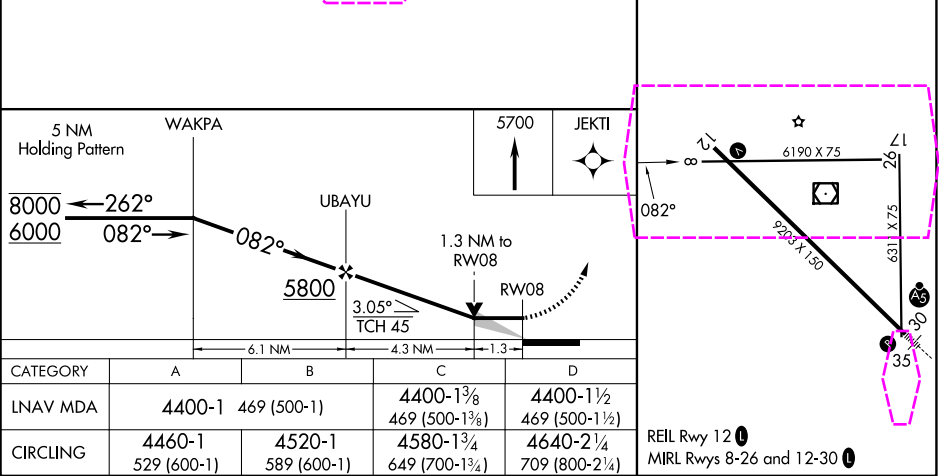
RNAV (GPS) RWY 8  
ALLIANCE MUNI (AIA)

RNP APCH.	MISSED APPROACH: Climb to 5700 direct JEKTI and hold.
-----------	---

ASOS 135.075	DENVER CENTER 127.95 338.2	UNICOM 123.0 (CTAF) 0
-----------------	-------------------------------	--------------------------



ELEV 3931	TDZE 3931
-----------	-----------



CATEGORY	A	B	C	D
LNNAV MDA	4400-1	469 (500-1)	4400-1 3/8 469 (500-1 3/8)	4400-1 1/2 469 (500-1 1/2)
CIRCLING	4460-1 529 (600-1)	4520-1 589 (600-1)	4580-1 3/4 649 (700-1 3/4)	4640-2 1/4 709 (800-2 1/4)

ALLIANCE, NEBRASKA 42°03'N-102°48'W

Orig-B 09SEP21

ALLIANCE MUNI (AIA)  
RNAV (GPS) RWY 8

NC-2, 07 AUG 2025 to 04 SEP 2025

NC-2, 07 AUG 2025 to 04 SEP 2025