

ALLIANCE, NEBRASKA

AL-16 (FAA)

24305

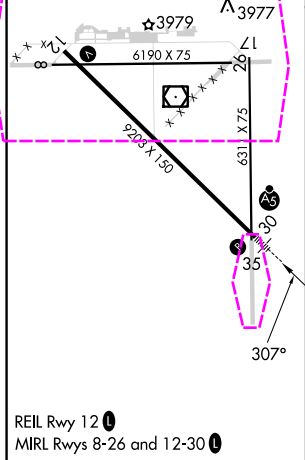
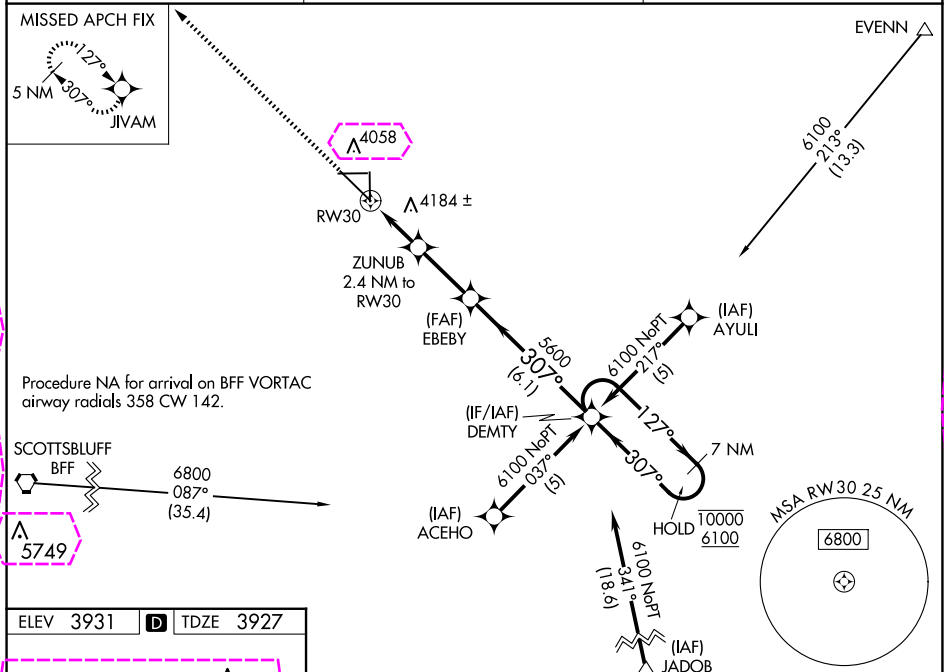
WAAS CH 82102 W30A	APP CRS 307°	Rwy Idg 9203 TDZE 3927 Apt Elev 3931
--	------------------------	---

RNAV (GPS) RWY 30

ALLIANCE MUNI (AIA)

RNP APCH.	MALSR	MISSED APPROACH: Climb to 5900 direct JIVAM and hold.
⚠ For uncompensated Baro-VNAV systems, LNAV/VNAV NA below -22°C or above 50°C. For inop ALS, increase LNAV/VNAV visibility all Cats to ½ SM and LNAV Cats C/D visibility to 1 ½ SM.		

ASOS 135.075	DENVER CENTER 127.95 338.2	UNICOM 123.0 (CTAF) 0
------------------------	--------------------------------------	---------------------------------



5900	JIVAM	ZUNUB 2.4 NM to RW30	EBEY	DEMTY	7 NM Holding Pattern
*LNAV only.		*1.3 NM to RW30	5600	127° → 10000 ← 307° 6100	
		4740*	5600		GP 3.00° TCH 55
		1.3 NM	1.1 NM	2.6 NM	6.1 NM
CATEGORY	A	B	C	D	
LPV DA	4127-½ 200 (200-½)				
LNAV/VNAV DA	4221-½ 294 (300-½)				
LNAV MDA	4400-½ 473 (500-½)		4400-1 473 (500-1)		
CIRCLING	4460-1 529 (600-1)	4520-1 589 (600-1)	4580-1¾ 649 (700-1¾)	4640-2¼ 709 (800-2¼)	

ALLIANCE, NEBRASKA
Amdt 1B 09SEP21

42°03'N-102°48'W

RNAV (GPS) RWY 30

NC-2, 10 JUL 2025 to 07 AUG 2025

NC-2, 10 JUL 2025 to 07 AUG 2025

ALLIANCE, NEBRASKA

AL-16 (FAA)

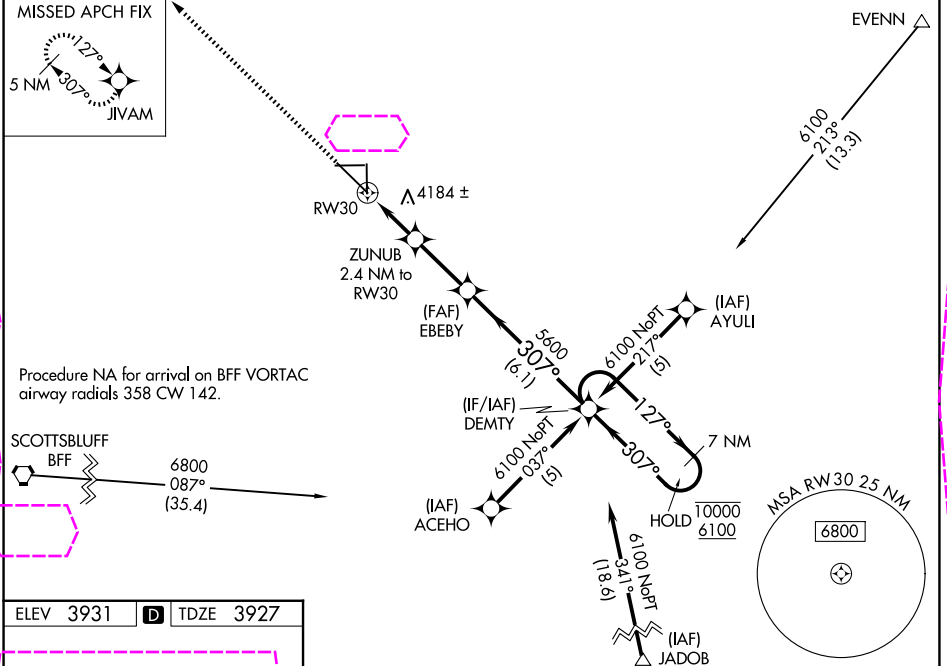
25219

WAAS CH 82102 W30A	APP CRS 307°	Rwy Ldg TDZE 9203 3927 Apt Elev 3931
--	------------------------	--

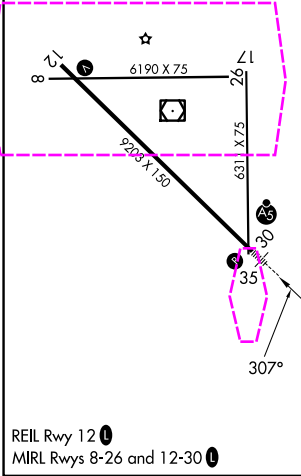
RNAV (GPS) RWY 30

ALLIANCE MUNI (AIA)

RNP APCH. ▲ For uncompensated Baro-VNAV systems, LNAV/VNAV NA below -22°C or above 50°C. For inop ALS, increase LNAV/VNAV visibility all Cats to ½ SM and LNAV Cats C/D visibility to 1 ½ SM.	MALSR 	MISSED APPROACH: Climb to 5900 direct JIVAM and hold.
ASOS 135.075	DENVER CENTER 127.95 338.2	UNICOM 123.0 (CTAF) 0



ELEV 3931	D	TDZE 3927
-----------	----------	-----------



5900	JIVAM	7 NM Holding Pattern			
*LNAV only.	ZUNUB 2.4 NM to RW30	EBEY	DENTY	127° → 10000 ← 307° 6100	
	*1.3 NM to RW30	5600		GP 3.00° TCH 55	
	1.3 NM	1.1 NM	2.6 NM	6.1 NM	
CATEGORY	A	B	C	D	
LPV DA	4127-½ 200 (200-½)				
LNAV/VNAV DA	4221-½ 294 (300-½)				
LNAV MDA	4400-½ 473 (500-½)		4400-1 473 (500-1)		
CIRCLING	4460-1 529 (600-1)	4520-1 589 (600-1)	4580-1¾ 649 (700-1¾)	4640-2¼ 709 (800-2¼)	

ALLIANCE, NEBRASKA
Amdt 1B 09SEP21

42°03'N-102°48'W

RNAV (GPS) RWY 30

ALLIANCE MUNI (AIA)

NC-2, 07 AUG 2025 to 04 SEP 2025

NC-2, 07 AUG 2025 to 04 SEP 2025