

ALLIANCE, NEBRASKA

AL-16 (FAA)

24305

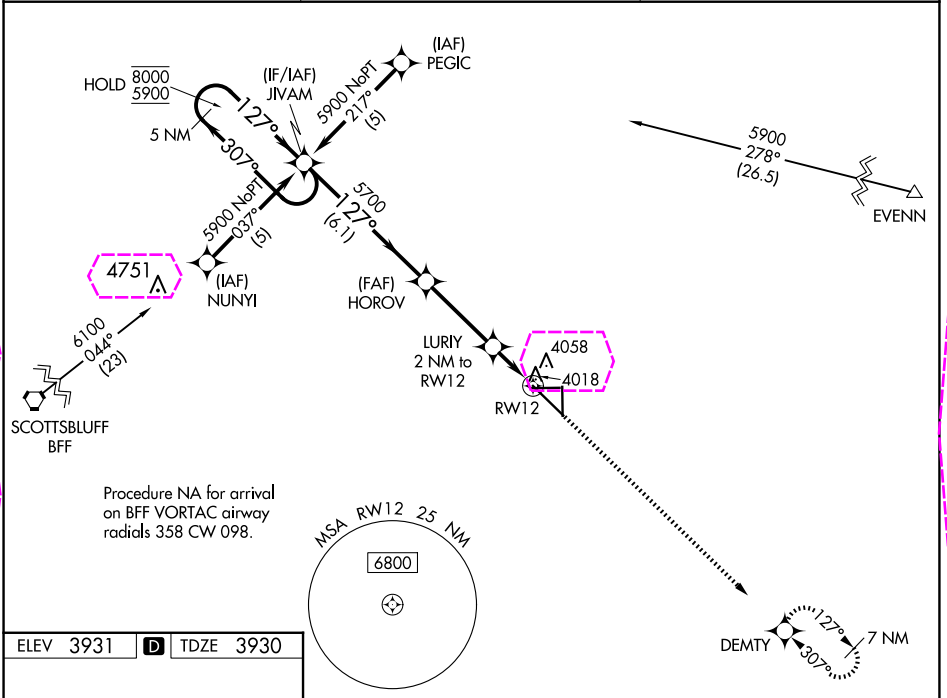
WAAS CH 61202 W12A	APP CRS 127°	Rwy Idg 9203 TDZE 3930 Apt Elev 3931
--	------------------------	---

RNAV (GPS) RWY 12

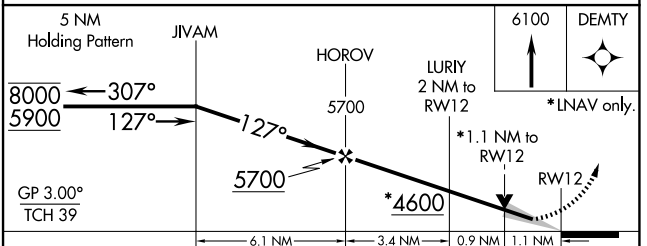
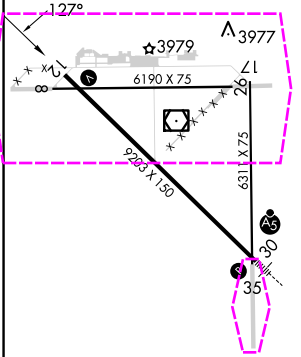
ALLIANCE MUNI (AIA)

RNP APCH. ▲ For uncompensated Baro-VNAV systems, LNAV/VNAV NA below -22°C or above 54°C.	MISSED APPROACH: Climb to 6100 direct DEMTY and hold.
--	---

ASOS 135.075	DENVER CENTER 127.95 338.2	UNICOM 123.0 (CTAF) 0
------------------------	--------------------------------------	---------------------------------



ELEV 3931	D	TDZE 3930
-----------	----------	-----------



CATEGORY	A	B	C	D
LPV DA	4180-1 250 (300-1)			
LNAV/VNAV DA	4273-1¼ 343 (400-1¼)			
LNAV MDA	4320-1 390 (400-1)	4320-1¼ 390 (400-1¼)	4320-1¼ 390 (400-1¼)	4320-1¼ 390 (400-1¼)
CIRCLING	4460-1 529 (600-1)	4520-1 589 (600-1)	4580-1¾ 649 (700-1¾)	4640-2¼ 709 (800-2¼)

REIL Rwy 12 0
MIRL Rwy 8-26 and 12-30 0

NC-2, 10 JUL 2025 to 07 AUG 2025

NC-2, 10 JUL 2025 to 07 AUG 2025

ALLIANCE, NEBRASKA

AL-16 (FAA)

25219

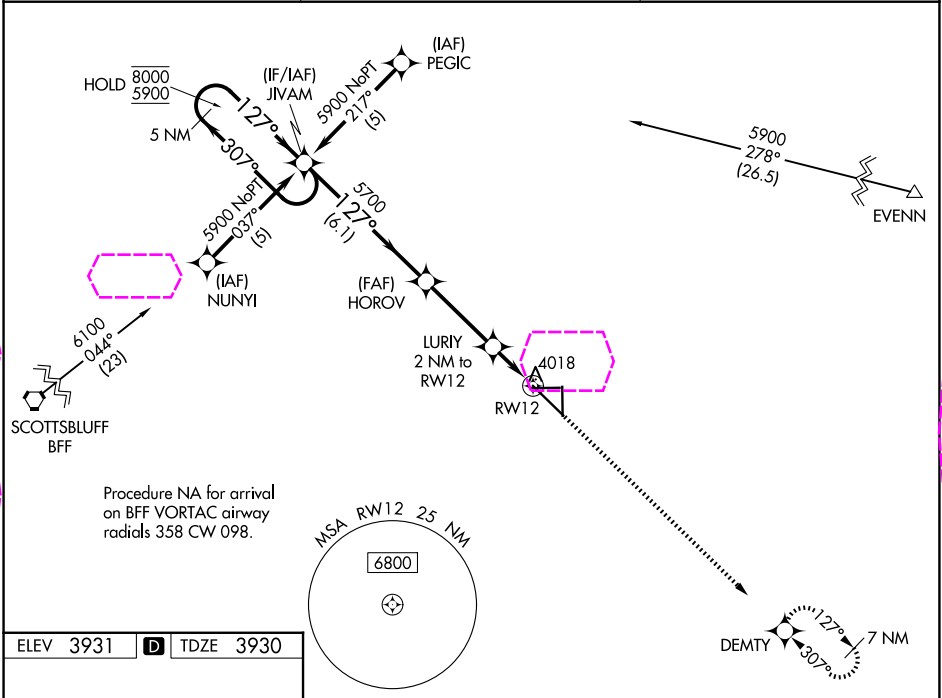
WAAS CH 61202 W12A	APP CRS 127°	Rwy Ldg TDZE 3930 Apt Elev 3931
--	------------------------	---

RNAV (GPS) RWY 12

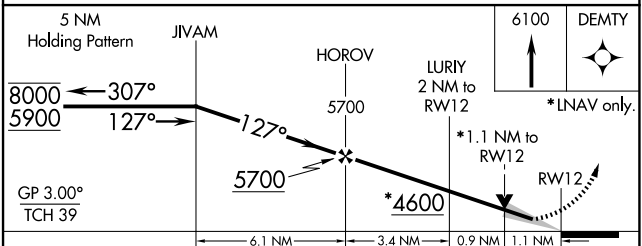
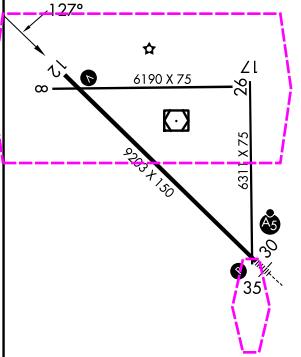
ALLIANCE MUNI (AIA)

RNP APCH. ⚠ For uncompensated Baro-VNAV systems, LNAV/VNAV NA below -22°C or above 54°C.	MISSED APPROACH: Climb to 6100 direct DEMTY and hold.
---	---

ASOS 135.075	DENVER CENTER 127.95 338.2	UNICOM 123.0 (CTAF) 0
------------------------	--------------------------------------	---------------------------------



ELEV 3931	D	TDZE 3930
-----------	----------	-----------



CATEGORY	A	B	C	D
LPV DA	4180-1 250 (300-1)			
LNAV/VNAV DA	4273-1¼ 343 (400-1¼)			
LNAV MDA	4320-1 390 (400-1)	4320-1¼ 390 (400-1¼)	4320-1¼ 390 (400-1¼)	4320-1¼ 390 (400-1¼)
CIRCLING	4460-1 529 (600-1)	4520-1 589 (600-1)	4580-1¾ 649 (700-1¾)	4640-2¼ 709 (800-2¼)

REIL Rwy 12 0
MIRL Rwys 8-26 and 12-30 0

NC-2, 07 AUG 2025 to 04 SEP 2025

NC-2, 07 AUG 2025 to 04 SEP 2025