

ALLENTOWN, PENNSYLVANIA

AL-15 (FAA)

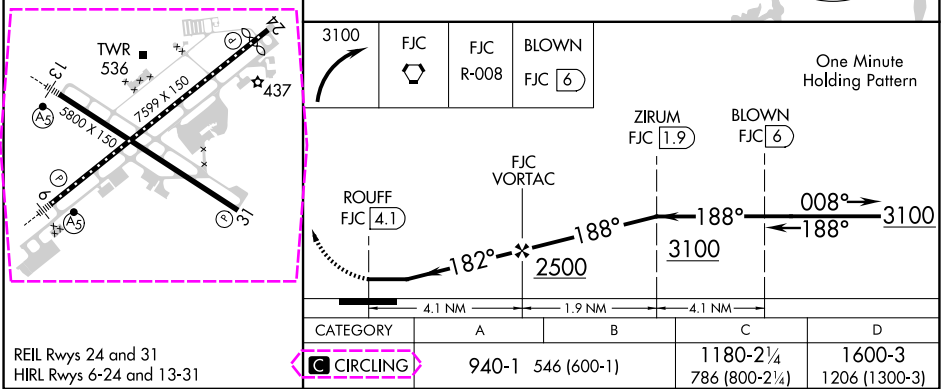
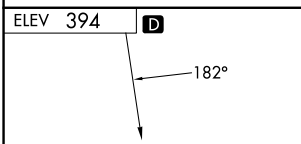
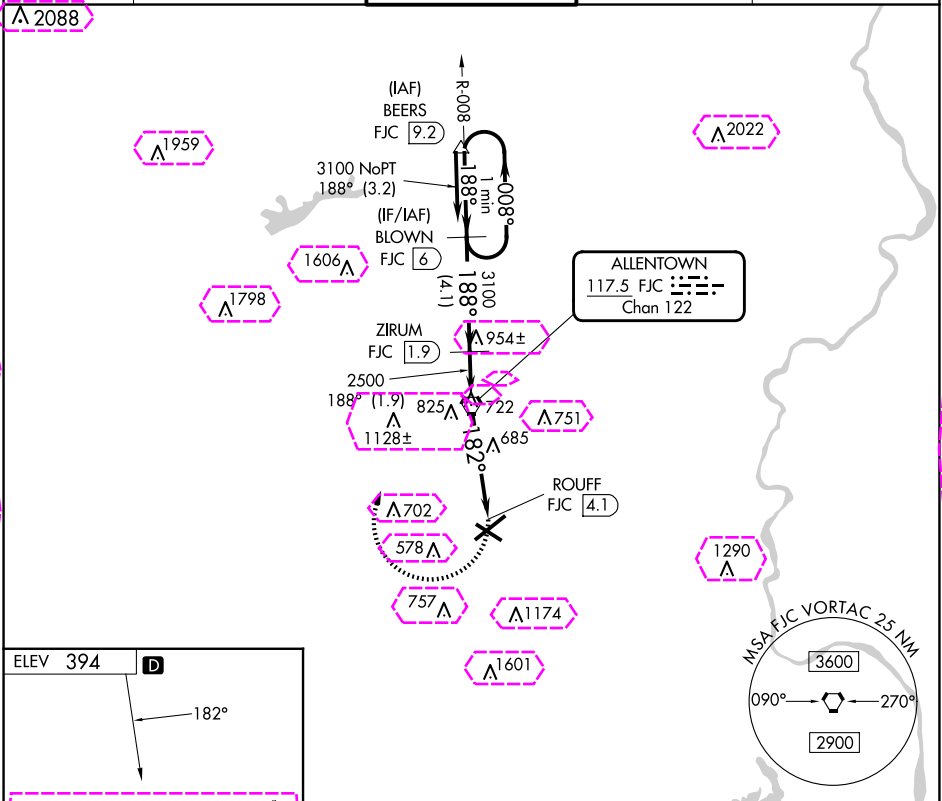
25107

VORTAC FJC 117.5 Chan 122	APP CRS 182°	Rwy Idg TDZE Apt Elev	N/A N/A 394
---------------------------------	-----------------	-----------------------------	-------------------

TACAN-C  
LEHIGH VALLEY INTL (ABE)

MISSED APPROACH: Climbing right turn to 3100 direct FJC VORTAC then via FJC R-008 to BLOWN/6 DME and hold.	
--	--

ATIS 126.975	ALLENTOWN APP CON 119.65 124.45 351.8	ALLENTOWN TOWER 120.5 257.95	GND CON 121.9 257.95	CLNC DEL 124.05 257.95
-----------------	--	---------------------------------	-------------------------	---------------------------



ALLENTOWN, PENNSYLVANIA

AL-15 (FAA)

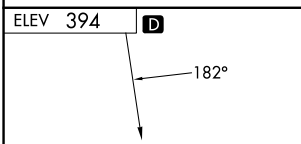
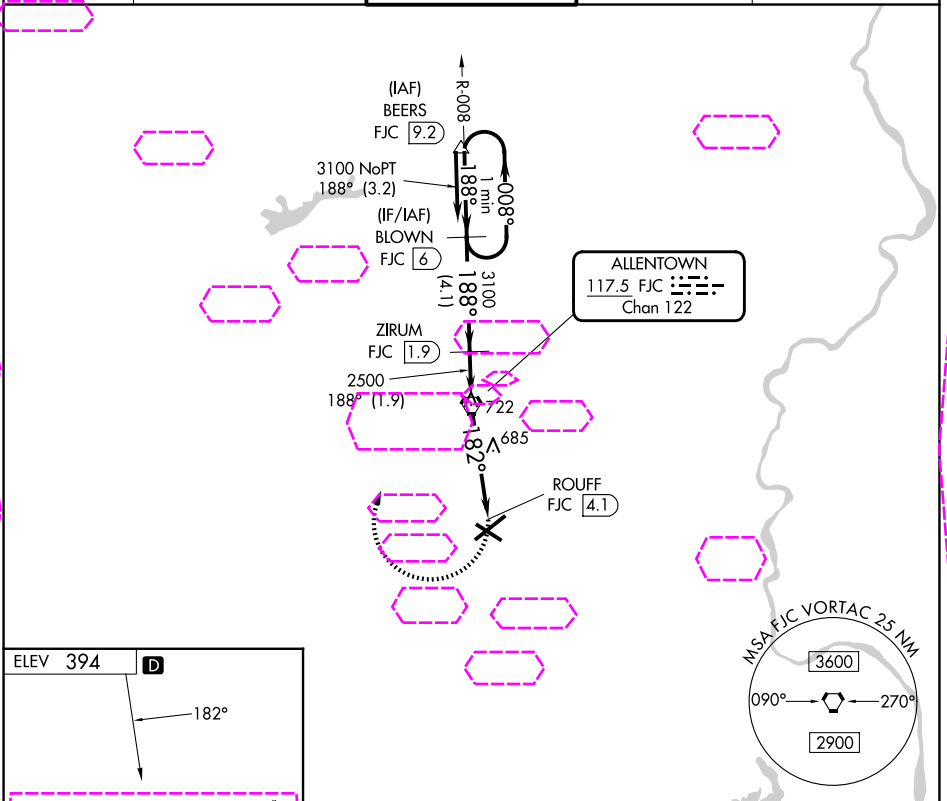
25219

VORTAC FJC	APP CRS	Rwy Ldg	N/A
117.5	182°	TDZE	N/A
Chan 122		Apt Elev	394

TACAN-C  
LEHIGH VALLEY INTL (ABE)

NA	MISSED APPROACH: Climbing right turn to 3100 direct FJC VORTAC then via FJC R-008 to BLOWN/6 DME and hold.
----	--

ATIS 126.975	ALLENTOWN APP CON 119.65 124.45 351.8	ALLENTOWN TOWER 120.5 257.95	GND CON 121.9 257.95	CLNC DEL 124.05 257.95
-----------------	--	---------------------------------	-------------------------	---------------------------



ELEV 394	D	182°	3100	FJC	FJC R-008	BLOWN FJC 6	One Minute Holding Pattern
				ROUFF FJC 4.1	FJC VORTAC	ZIRUM FJC 1.9	BLOWN FJC 6
				182°	188°	188°	008°
				2500	3100	3100	3100
				4.1 NM	1.9 NM	4.1 NM	
CATEGORY				A	B	C	D
CIRCLING				940-1	546 (600-1)	1180-2¼ 786 (800-2¼)	1600-3 1206 (1300-3)

REIL Rwy 24 and 31  
HIRL Rwy 6-24 and 13-31

ALLENTOWN, PENNSYLVANIA  
Orig-A 24MAY18

40°39'N-75°26'W

LEHIGH VALLEY INTL (ABE)  
TACAN-C

NE-4, 07 AUG 2025 to 04 SEP 2025

NE-4, 07 AUG 2025 to 04 SEP 2025