


25107

WAAS CH 69432 W06A	APP CRS 063°	Rwy Idg 7599 TDZE 394 Apt Elev 394
--	------------------------	---

RNAV (GPS) RWY 6
LEHIGH VALLEY INTL (ABE)

RNP APCH - GPS.		MALSR	MISSED APPROACH: Climb to 3000 direct FONUP and hold.
<div style="display: flex; flex-direction: column; align-items: center;"> <div>▼</div> <div>▲</div> </div>	<p>For uncompensated Baro-VNAV systems, LNAV/VNAV NA below -8°C or above 54°C. For inop ALS, increase LNAV Cat C/D visibility to 1½ SM.</p> <p>**RVR 1800 authorized with use of FD or AP or HUD to DA.</p>		

MALSR

MISSED APPROACH:
Climb to 3000 direct
FONUP and hold.

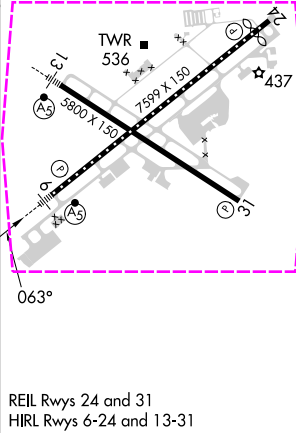
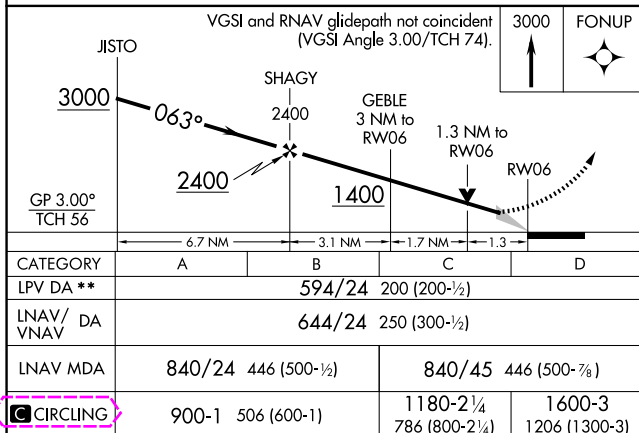
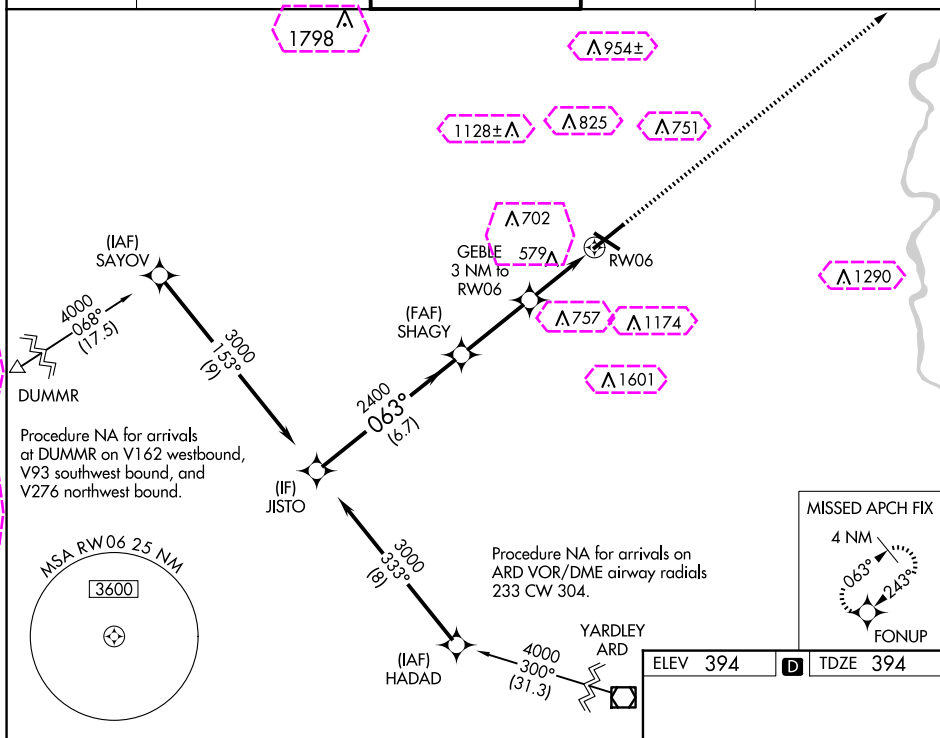
ATIS
126.975

ALLENTOWN APP CON
119.65 124.45 351.8

ALLENTOWN TOWER
120.5 257.95

GND CON
121.9 257.95

CLNC DEL
124.05 257.95



ALLENTOWN, PENNSYLVANIA
Amdt 1D 16MAY24

40°39'N-75°26'W

LEHIGH VALLEY INTL (ABE)
RNAV (GPS) RWY 6

NE-4, 10 JUL 2025 to 07 AUG 2025

ALLENTOWN, PENNSYLVANIA

AL-15 (FAA)

25219

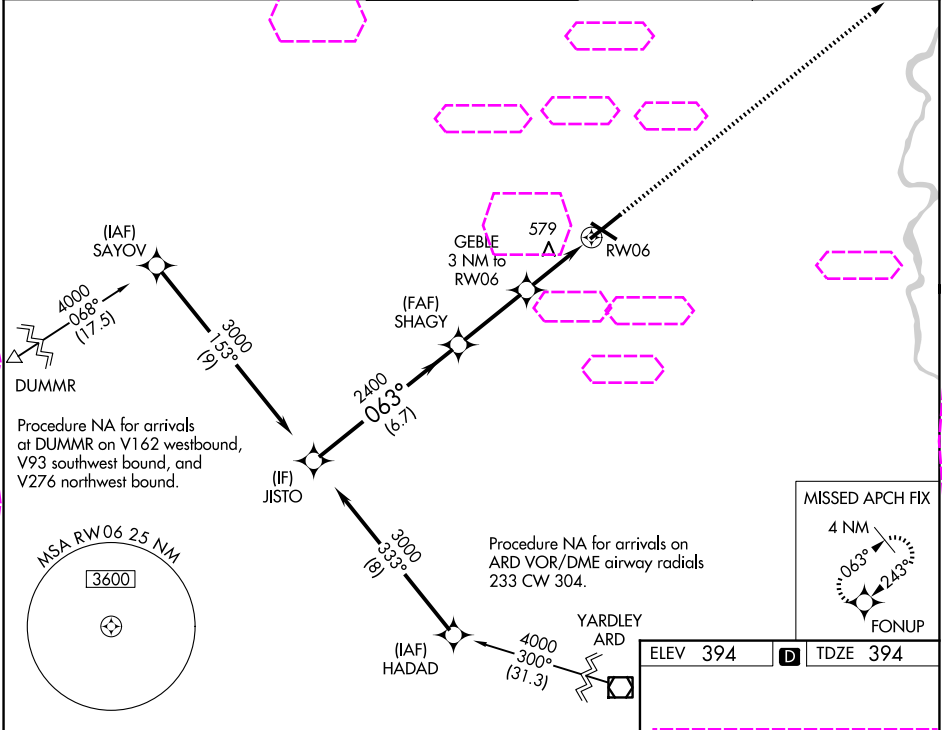
WAAS CH 69432 W06A	APP CRS 063°	Rwy Ldg 7599 TDZE 394 Apt Elev 394
--	------------------------	---

RNAV (GPS) RWY 6

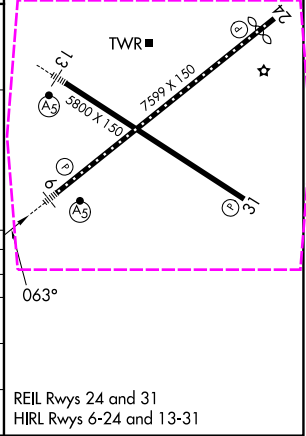
LEHIGH VALLEY INTL (ABE)

RNP APCH - GPS	MALSR	MISSED APPROACH: Climb to 3000 direct FONUP and hold.
----------------	-------	---

ATIS 126.975	ALLENTOWN APP CON 119.65 124.45 351.8	ALLENTOWN TOWER 120.5 257.95	GND CON 121.9 257.95	CLNC DEL 124.05 257.95
------------------------	---	--	--------------------------------	----------------------------------



VGSI and RNAV glidepath not coincident (VGSI Angle 3.00/TCH 74).				
JISTO 3000 063° SHAGY 2400 GEBLE 1400 1.3 NM to RW06 RW06				
GP 3.00° TCH 56 6.7 NM 3.1 NM 1.7 NM 1.3				
CATEGORY	A	B	C	D
LPV DA **	594/24 200 (200-½)			
LNAY/ DA VNAV	644/24 250 (300-½)			
LNAY MDA	840/24 446 (500-½)		840/45 446 (500-¾)	
CIRCLING	900-1 506 (600-1)		1180-2¼ 786 (800-2¼) 1600-3 1206 (1300-3)	



NE-4, 07 AUG 2025 to 04 SEP 2025

NE-4, 07 AUG 2025 to 04 SEP 2025