

ALLENTOWN, PENNSYLVANIA

AL-15 (FAA)

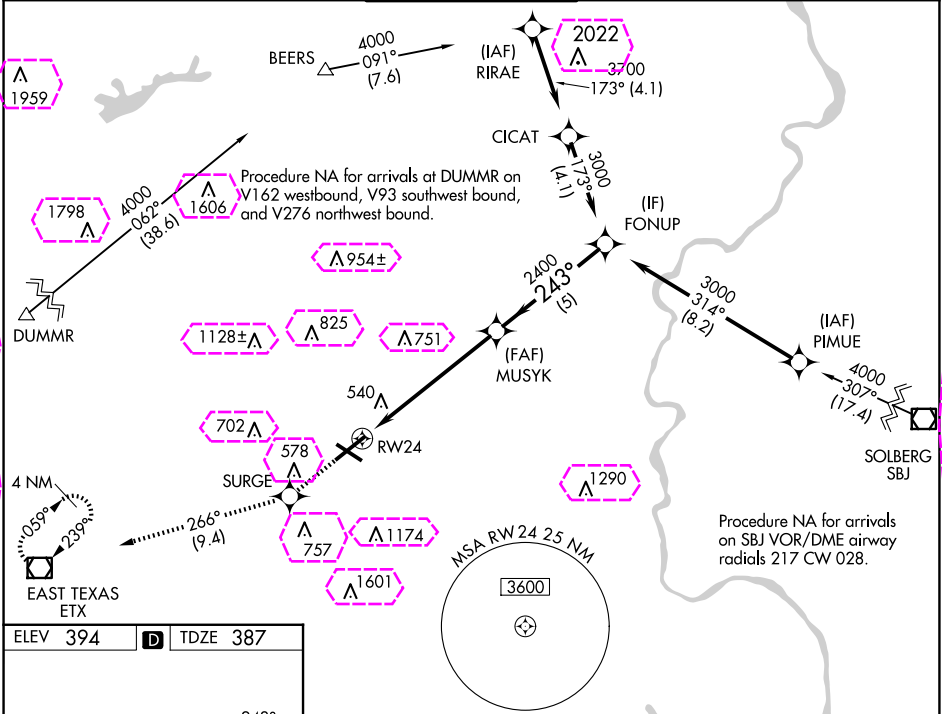
25107

WAAS CH 40332 W24A	APP CRS 243°	Rwy Idg 7089 TDZE 387 Apt Elev 394
--	------------------------	---

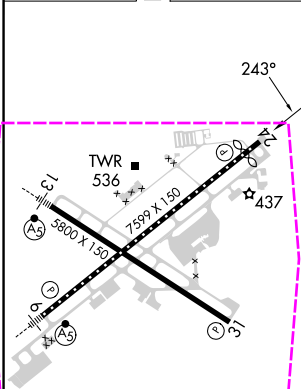
RNAV (GPS) RWY 24

LEHIGH VALLEY INTL (ABE)

RNP APCH - GPS.		MISSED APPROACH: Climb to 3000 direct SURGE and on track 266° to ETX VOR/DME and hold.		
For uncompensated Baro-VNAV systems, LNAV/VNAV NA below -8°C or above 54°C.				
ATIS 126.975	ALLENTOWN APP CON 119.65 124.45 351.8	ALLENTOWN TOWER 120.5 257.95	GND CON 121.9 257.95	CLNC DEL 124.05 257.95



ELEV 394	D	TDZE 387
----------	---	----------



3000 SURGE		tr 266°	ETX	VGSI and RNAV glidepath not coincident (VGSI Angle 3.00/TCH 71).	
1.3 NM to RW24		RW24		FONUP 3000	
2400		2400		GP 3.00° TCH 55	
1.3 NM		4.9 NM		5 NM	
CATEGORY	A	B	C	D	
LPV DA	587/40		200 (200-¾)		
LNAV/VNAV DA	783-1¼		396 (400-1¼)		
LNAV MDA	860/55 473 (500-1)		860-1⅔ 473 (500-1⅔)		
<input checked="" type="checkbox"/> CIRCLING	900-1 506 (600-1)		1180-2¼ 786 (800-2¼)		1600-3 1206 (1300-3)

ALLENTOWN, PENNSYLVANIA
Amdt 1C 16MAY24

40°39'N-75°26'W

RNAV (GPS) RWY 24

ALLENTOWN, PENNSYLVANIA

AL-15 (FAA)

25219

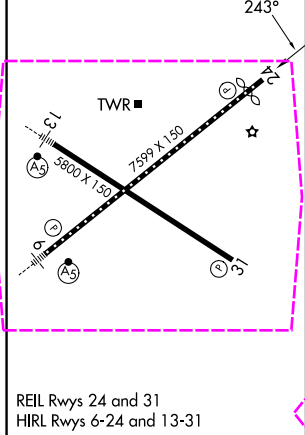
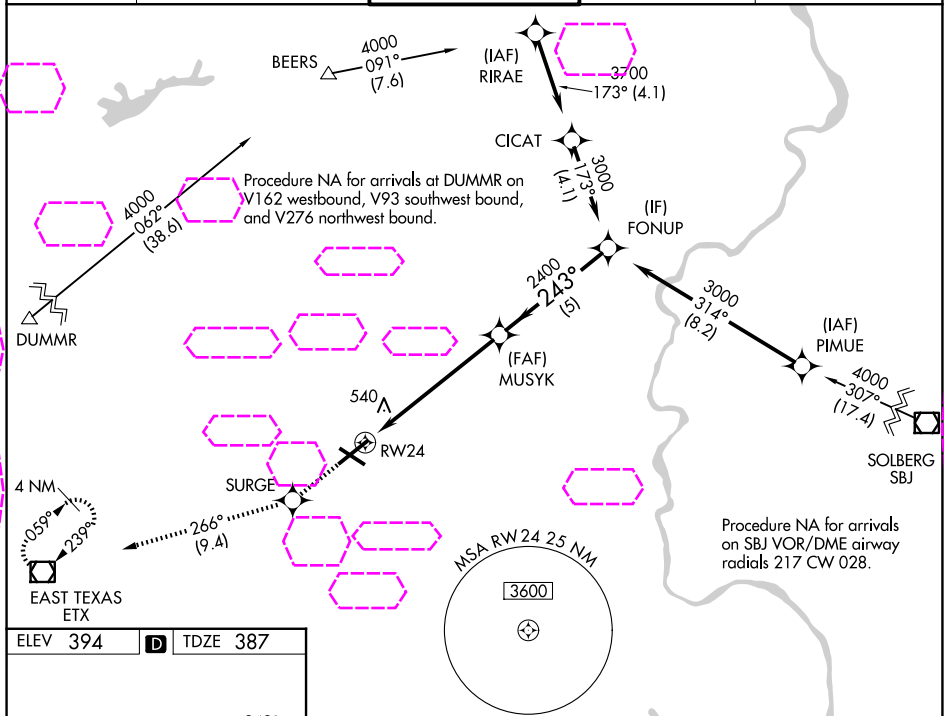
WAAS CH 40332 W24A	APP CRS 243°	Rwy Ldg 7089 TDZE 387 Apt Elev 394
--	------------------------	---

RNAV (GPS) RWY 24

LEHIGH VALLEY INTL (ABE)

RNP APCH - GPS.		MISSED APPROACH: Climb to 3000 direct SURGE and on track 266° to ETX VOR/DME and hold.	
For uncompensated Baro-VNAV systems, LNAV/VNAV NA below -8°C or above 54°C.			

ATIS 126.975	ALLENTOWN APP CON 119.65 124.45 351.8	ALLENTOWN TOWER 120.5 257.95	GND CON 121.9 257.95	CLNC DEL 124.05 257.95
------------------------	---	--	--------------------------------	----------------------------------



ELEV 394 D TDZE 387		3000 SURGE tr 266° ETX		VGSI and RNAV glidepath not coincident (VGSI Angle 3.00/TCH 71).	
1.3 NM to RW24		MUSYK 2400		FONUP 3000	
1.3 NM		4.9 NM		5 NM	
CATEGORY	A	B	C	D	
LPV DA	587/40		200 (200-¾)		
LNAV/VNAV DA	783-1¼		396 (400-1¼)		
LNAV MDA	860/55 473 (500-1)		860-1⅓ 473 (500-1⅓)		
CIRCLING	900-1 506 (600-1)		1180-2¼ 786 (800-2¼)		1600-3 1206 (1300-3)

ALLENTOWN, PENNSYLVANIA
Amdt 1C 16MAY24

40°39'N-75°26'W

RNAV (GPS) RWY 24