

ALLENTOWN, PENNSYLVANIA

AL-15 (FAA)

25107

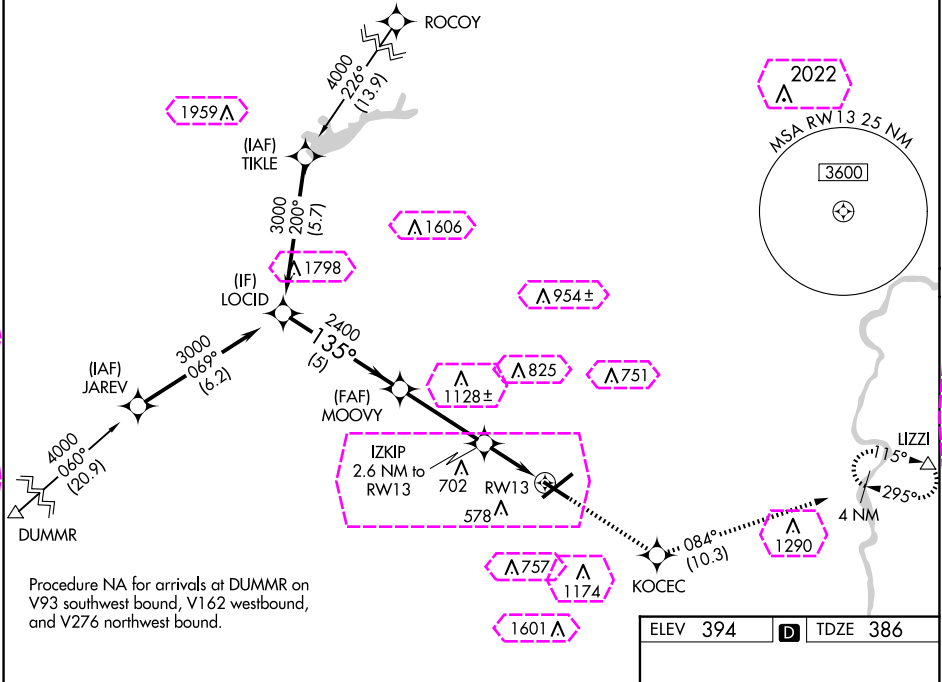
WAAS CH 82532 W13A	APP CRS 135°	Rwy Idg 5800 TDZE 386 Apt Elev 394
--	------------------------	---

RNAV (GPS) RWY 13

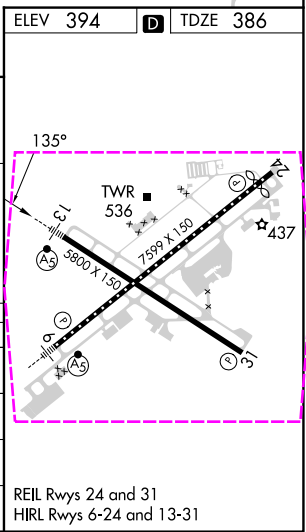
LEHIGH VALLEY INTL (ABE)

RNP APCH - GPS.	MALSR	MISSED APPROACH: Climb to 3000 direct KOCEC and on track 084° to LIZZI and hold.
▼ For uncompensated Baro-VNAV systems, LNAV/VNAV NA below -16°C or above 54°C. For inop ALS, increase LNAV Cat C/D visibility to 1½ SM.	AS	

ATIS 126.975	ALLENTOWN APP CON 119.65 124.45 351.8	ALLENTOWN TOWER 120.5 257.95	GND CON 121.9 257.95	CLNC DEL 124.05 257.95
------------------------	---	--	--------------------------------	----------------------------------



LOCID	3000	MOOVY	2400	IZKIP	2600	RWY 13
GP 3.00°						
TCH 56						
	5 NM	3.6 NM	1.5 NM	1.1 NM		
CATEGORY	A	B	C	D		
LPV DA		586-½	200 (200-½)			
LNAV/VNAV DA		700-½	314 (400-½)			
LNAV MDA	800-½	414 (500-½)	800-¾	414 (500-¾)		
CIRCLING	900-1	506 (600-1)	1180-2¼ 786 (800-2¼)	1600-3 1206 (1300-3)		



ALLENTOWN, PENNSYLVANIA

Amdt 2A 16MAY24

40°39'N-75°26'W

LEHIGH VALLEY INTL (ABE)

RNAV (GPS) RWY 13

WAAS CH 82532 W13A	APP CRS 135°	Rwy Ldg 5800 TDZE 386 Apt Elev 394
--	------------------------	---

RNAV (GPS) RWY 13
LEHIGH VALLEY INTL (ABE)

RNP APCH - GPS.	
-----------------	--

T For uncompensated Baro-VNAV systems, LNAV/VNAV NA below -16°C or above 54°C. For inop ALS, increase LNAV Cat C/D visibility to 1½ SM.

MALSR



MISSED APPROACH: Climb to 3000 direct KOCEC and on track 084° to LZZI and hold.

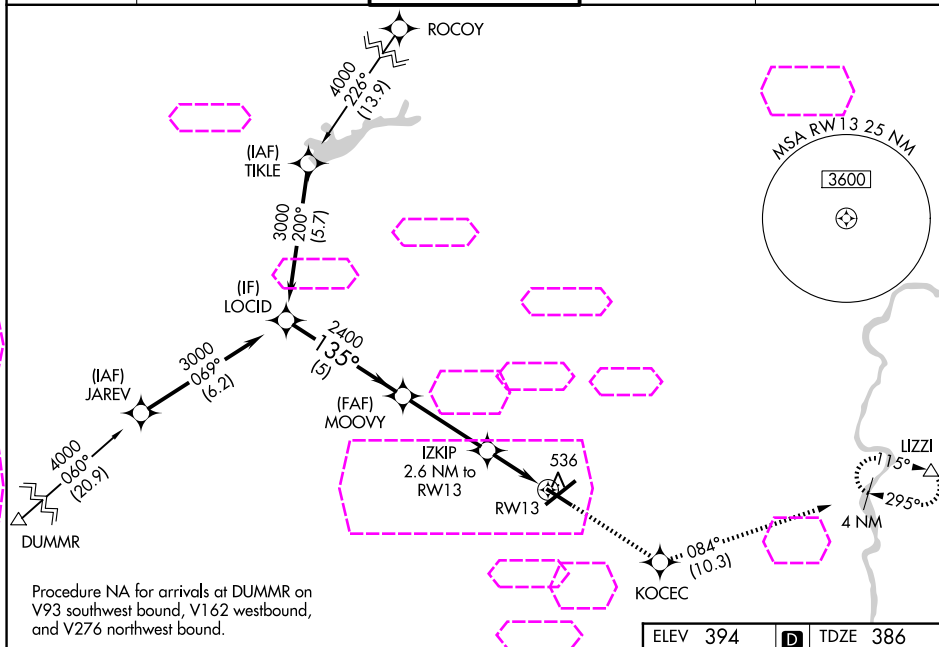
ATIS
126.975

ALLENTOWN APP CON
19.65 124.45 351.8

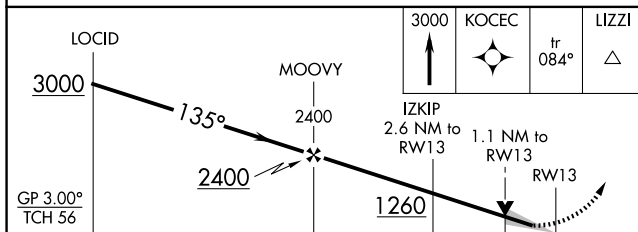
ALLENTOWN TOWER
120.5 257.95

GND CON
21.9 257.95

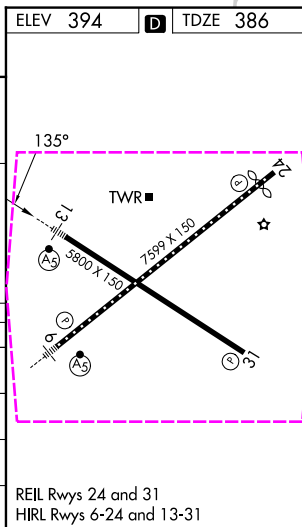
CLNC DEL
124.05 257.95



Procedure NA for arrivals at DUMMR on V93 southwest bound, V162 westbound, and V276 northwest bound.



CATEGORY	A	B	C	D
LPV DA	586-½ 200 (200-½)			
LNAV/VNAV DA	700-½ 314 (400-½)			
LNAV MDA	800-½ 414 (500-½)		800-¾ 414 (500-¾)	
CIRCLING	900-1 506 (600-1)		1180-2¼ 786 (800-2¼)	1600-3 1206 (1300-3)



ALLENTOWN, PENNSYLVANIA
Amdt 2A 16MAY24

40°39'N-75°26'W

LEHIGH VALLEY INTL (ABE)
RNAV (GPS) RWY 13