

ALLENTOWN, PENNSYLVANIA

AL-15 (FAA)

25107

LOC I-ABE 110.7	APP CRS 063°	Rwy Idg 7599 TDZE 394 Apt Elev 394
---------------------------	------------------------	---

ILS or LOC RWY 6
LEHIGH VALLEY INTL (ABE)

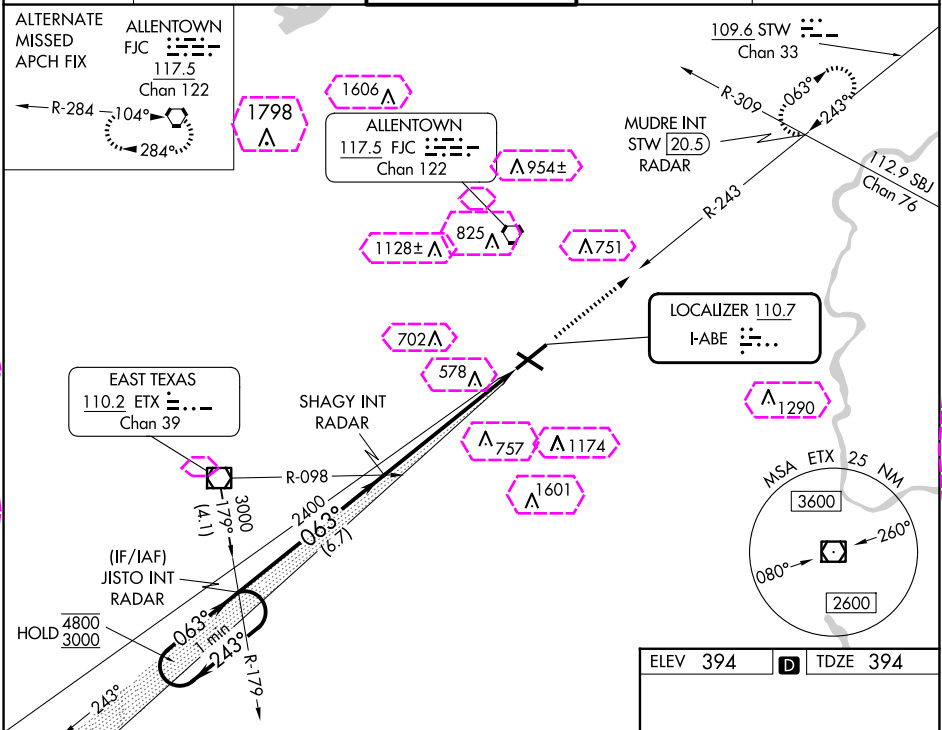
▽ * RVR 1800 authorized with use of FD or AP or HUD to DA.

△

MALSR

MISSED APPROACH: Climb to 3000 on heading 063° and STW R-243 to MUDRE INT/STW 20.5 DME/RADAR and hold.

ATIS 126.975	ALLENTOWN APP CON 119.65 124.45 351.8	ALLENTOWN TOWER 120.5 257.95	GND CON 121.9 257.95	CLNC DEL 124.05 257.95
------------------------	---	--	--------------------------------	----------------------------------



VGSI and descent angles not coincident (VGSI Angle 3.00/TCH 74).			
One Minute Holding Pattern			
GS 3.00° TCH 57			
CATEGORY	A	B	C
S-ILS 6*	594/24 200 (200-1/2)		
S-LOC 6	920/24 526 (600-1/2)	920/55 526 (600-1)	
CIRCLING	920-1 526 (600-1)	1180-2 1/4 786 (800-2 1/4)	1600-3 1206 (1300-3)

ELEV 394 **D** TDZE 394

REIL Rws 24 and 31
HIRL Rws 6-24 and 13-31
FAF to MAP 6.1 NM

Knots	60	90	120	150	180
Min:Sec	6:06	4:04	3:03	2:26	2:02

ALLENTOWN, PENNSYLVANIA
Amdt 24 03JAN19

40°39'N-75°26'W

LEHIGH VALLEY INTL (ABE)
ILS or LOC RWY 6

LOC I-ABE <u>110.7</u>	APP CRS 063°	Rwy Ldg TDZE Apt Elev	7599 394 394
----------------------------------	------------------------	-----------------------------	---

ILS or LOC RWY 6

T
A * RVR 1800 authorized with use of FD or AP or HUD to DA.


MALSR

MISSED APPROACH: Climb to 3000 on heading 063° and STW R-243 to MUDRE INT/STW 20.5 DME/RADAR and hold.

ATIS 126.975	ALLETOWN APP CON 119.65 124.45 351.8	ALLETOWN TOWER 120.5 257.95	GND CON 121.9 257.95	CLNC DEL 124.05 257.95
-----------------	---	--------------------------------	-------------------------	---------------------------

ALTERNATE
MISSED
APCH FIX


ALLENTOWN
FJC 
117.5
Chan 122

ALLENTOWN
117.5 FJC 
Chgn 122

109.6 STW
Chan 33

MUDRE IN
STW 20.
RADAR

Chan 76

EAST TEXAS
110.2 ETX 
Chan 39

SHAGY IN

LOCALIZER 110.7
I-ABE $\frac{1}{2} \dots$

VGSI and descent angles not coincident
(VGSI Angle 3.00/TCH 74).

One Minute Holding Pattern

JISTO INT

cident

STW
D. 242MUDRE
INIT
$$\begin{array}{r} 4800 \\ 3000 \\ \hline \end{array} \quad \begin{array}{c} \leftarrow \\ \hline \end{array}$$

1

SHAGY INT

RADAR

GS 3.00
TCH 57

		6.7 NM		6.1 NM		063°	
CATEGORY	A	B	C	D			
S-ILS 6 *	594/24 200 (200-½)					REIL Rwy 24 and 31 HIRL Rwy 6-24 and 13-31	
S-LOC 6	920/24 526 (600-½)		920/55 526 (600-1)		FAF to MAP 6.1 NM		
CIRCLING	920-1 526 (600-1)		1180-2¼ 786 (800-2¼)		1600-3 1206 (1300-3)		
	Knots	60	90	120	150	180	
	Min:Sec	6:06	4:04	3:03	2:26	2:02	

ALLENTOWN, PENNSYLVANIA
Amdt 24 03JAN19

40°39'N-75°26'W

LEHIGH VALLEY INTL (ABE)
ILS or LOC RWY 6

NE-4, 07 AUG 2025 to 04 SEP 2025

NE-4, 07 AUG 2025 to 04 SEP 2025.