

LOC I-BXY	APP CRS	Rwy Idg	5800
<u>111.9</u>	<u>135°</u>	TDZE	386
		Apt Elev	394

# ILS or LOC RWY 13

## LEHIGH VALLEY INTL (ABE)

**T**  
**A** For inoperative MALS, increase IZKIP fix minimums S-LOC 13 Cat C/D visibility to 1 mile.

MALSR

**MISSED APPROACH:** Climb to 1300 then climbing left turn to 3000 on heading 060° and on SBJ VOR/DME R-295 to LIZZI INT and hold.

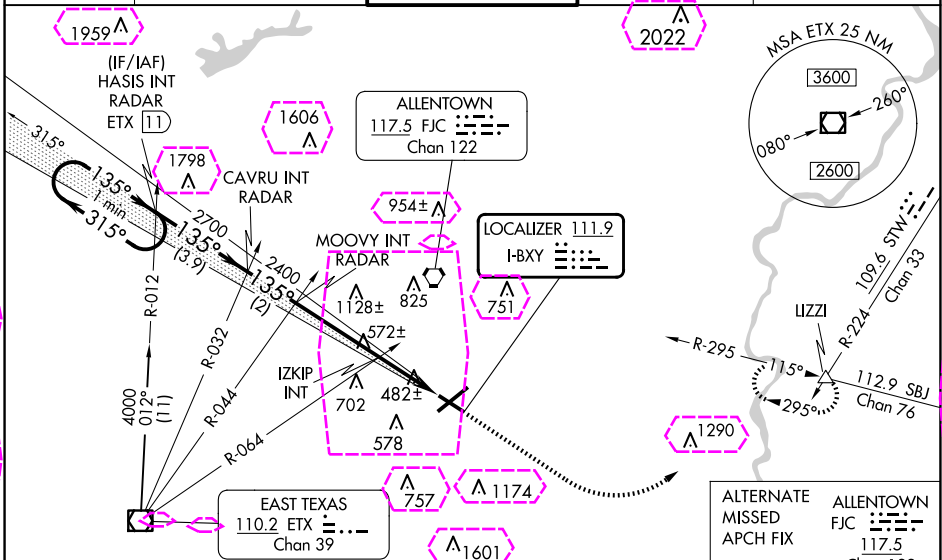
ATIS  
126.975

ALLENTOWN APP CON  
119.65 124.45 351.8

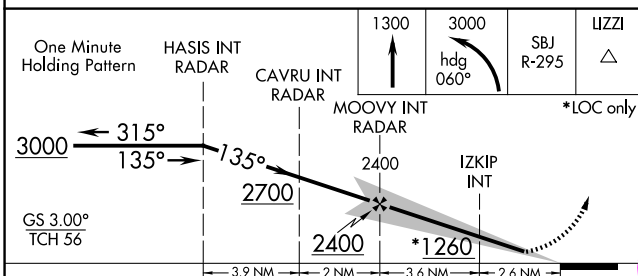
ALLENTOWN TOWER  
120.5 257.95

GND CON  
121.9 257.95

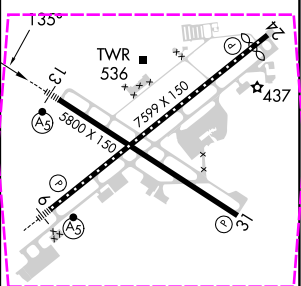
CLNC DEL  
**124.05 257.95**



NE-4, 10 JUL 2025 to 07 AUG 2025



CATEGORY	A	B	C	D
S-ILS 13	586-½ 200 (200-½)			
S-LOC 13	1260-½ 874 (900-½)	1260-¾ 874 (900-¾)	1260-2	874 (900-2)
<b>CIRCLING</b>	1260-1¼	866 (900-1¼)	1260-2½ 866 (900-2½)	1600-3 1206 (1300-3)
IZKIP FIX MINIMUMS (DUAL VOR RECEIVERS REQUIRED)				
S-LOC 13	740-½	354 (400-½)	740-⅝	354 (400-⅝)
<b>CIRCLING</b>	840-1 446 (500-1)	900-1 506 (600-1)	1180-2¼ 786 (800-2¼)	1600-3 1206 (1300-3)



REIL Rwy 24 and 31  
HIRL Rwy 6-24 and 13-31

FAF to MAP 6.2 NM

Knots	60	90	120	150	180
Min:Sec	6:12	4:08	3:06	2:29	2:04

ALLENTOWN, PENNSYLVANIA

AL-15 (FAA)

25219

LOC I-BXY <b>111.9</b>	APP CRS <b>135°</b>	Rwy Ldg <b>5800</b>
		TDZE <b>386</b>
		Apt Elev <b>394</b>

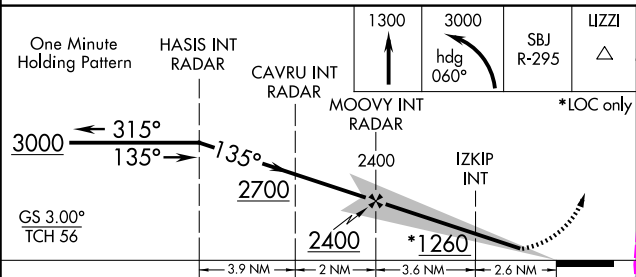
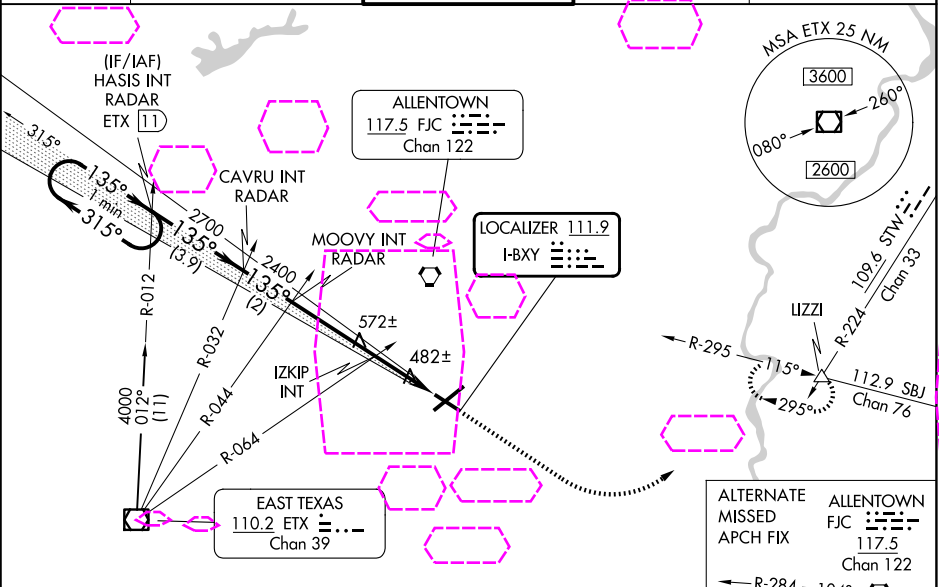
ILS or LOC RWY 13  
LEHIGH VALLEY INTL (ABE)

**⚠** For inoperative MALSR, increase IZKIP fix minimums S-LOC 13 Cat C/D visibility to 1 mile.

MALSR

MISSED APPROACH: Climb to 3000 then climbing left turn to 3000 on heading 060° and on SBJ VOR/DME R-295 to IZZI INT and hold.

ATIS <b>126.975</b>	ALLENTOWN APP CON <b>119.65 124.45 351.8</b>	ALLENTOWN TOWER <b>120.5 257.95</b>	GND CON <b>121.9 257.95</b>	CLNC DEL <b>124.05 257.95</b>
------------------------	---	--	--------------------------------	----------------------------------



CATEGORY	A	B	C	D
S-ILS 13	586-½ 200 (200-½)			
S-LOC 13	1260-½ 874 (900-½)	1260-¾ 874 (900-¾)	1260-2 874 (900-2)	
CIRCLING	1260-1¼ 866 (900-1¼)		1260-2½ 866 (900-2½)	1600-3 1206 (1300-3)
IZKIP FIX MINIMUMS (DUAL VOR RECEIVERS REQUIRED)				
S-LOC 13	740-½ 446 (500-1)	354 (400-½)	740-⅝ 786 (800-2¼)	354 (400-⅝)
CIRCLING	840-1 446 (500-1)	900-1 506 (600-1)	1180-2¼ 786 (800-2¼)	1600-3 1206 (1300-3)

ALTERNATE MISSED APPROACH FIX

ALL TOWNS

APCH FIX

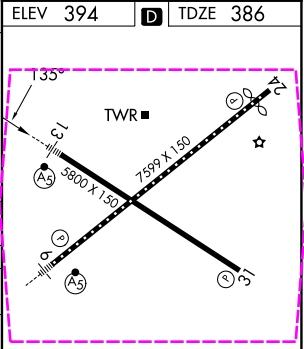
FJC

117.5

Chan 122

ELEV 394

TDZE 386



REIL Rwy 24 and 31	
HIRL Rwy 6-24 and 13-31	
FAF to MAP 6.2 NM	
Knots	60 90 120 150 180
Min:Sec	6:12 4:08 3:06 2:29 2:04

NE-4, 07 AUG 2025 to 04 SEP 2025

NE-4, 07 AUG 2025 to 04 SEP 2025