

**ILS RWY 6 (SA CAT I & II)**  
**LEHIGH VALLEY INTL (ABE)**

**MISSED APPROACH:** Climb to 3000 on heading 063° and STW R-243 to MUDRE INT/STW 20.5 DME/RADAR and hold.

|          |          |          |
|----------|----------|----------|
| ELEV 394 | <b>D</b> | TDZE 394 |
|----------|----------|----------|

SA CATEGORY I & II ILS - SPECIAL AIRCREW  
& AIRCRAFT CERTIFICATION REQUIRED

REIL Rwys 24 and 31  
HIRL Rwys 6-24 and 13-31

NE-4, 10 JUL 2025 to 07 AUG 2025

ALLENTOWN, PENNSYLVANIA

AL-15 (FAA)

25219

|                           |                        |  |
|---------------------------|------------------------|--|
| LOC I-ABE<br><b>110.7</b> | APP CRS<br><b>063°</b> | Rwy Ldg<br><b>7599</b><br>TDZE<br><b>394</b><br>Apt Elev<br><b>394</b> |
|---------------------------|------------------------|--|

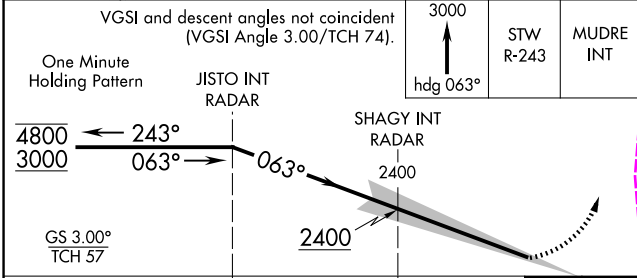
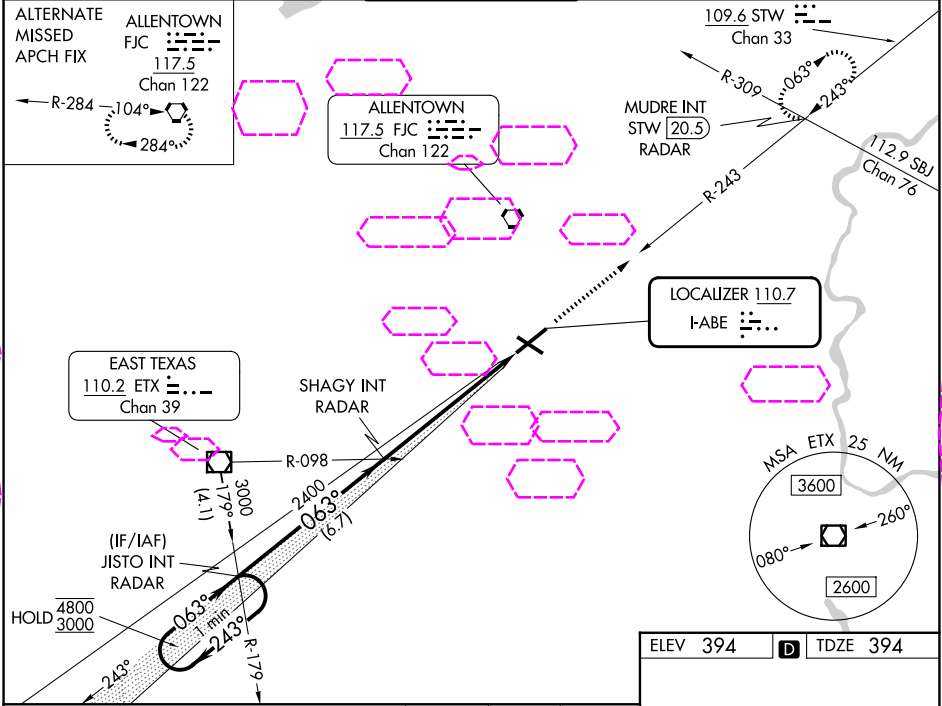
# ILS RWY 6 (SA CAT I & II) LEHIGH VALLEY INTL (ABE)

SA CAT I: Requires specific OPSPEC, MSPEC, or LOA approval and use of HUD to DH. SA CAT II: Reduced lighting: Requires specific OPSPEC, MSPEC, or LOA approval and use of autoland or HUD to touchdown.

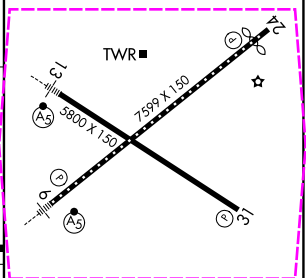
MALSR  
AS

MISSED APPROACH: Climb to 3000 on heading 063° and STW R-243 to MUDRE INT/STW 20.5 DME/ RADAR and hold.

|                        |   |  |                                |                                  |
|------------------------|---|--|--------------------------------|----------------------------------|
| ATIS<br><b>126.975</b> | ALLENTOWN APP CON<br><b>119.65 124.45 351.8</b> | ALLENTOWN TOWER<br><b>120.5 257.95</b> | GND CON<br><b>121.9 257.95</b> | CLNC DEL<br><b>124.05 257.95</b> |
|------------------------|---|--|--------------------------------|----------------------------------|



|          |   |          |
|----------|---|----------|
| ELEV 394 | D | TDZE 394 |
|----------|---|----------|



| CATEGORY | A         | B         | C          | D |
|----------|-----------|-----------|------------|---|
| S-ILS 6  | SA CAT I  | RA 154/14 | 150 DA 544 |   |
| S-ILS 6  | SA CAT II | RA 114/12 | 100 DA 494 |   |

**SA CATEGORY I & II ILS - SPECIAL AIRCREW & AIRCRAFT CERTIFICATION REQUIRED**

REIL Rwy 24 and 31  
HIRL Rwy 6-24 and 13-31

NE-4, 07 AUG 2025 to 04 SEP 2025

NE-4, 07 AUG 2025 to 04 SEP 2025