

VOR/DME AXN <b>115.95</b> Chan <b>106(Y)</b>	APP CRS <b>224°</b>	Rwy Idg TDZE Apt Elev	<b>4098</b> <b>1423</b> <b>1425</b>
--	------------------------	-----------------------------	---

VOR RWY 22  
ALEXANDRIA RGNL/CHANDLER FLD (AXN)

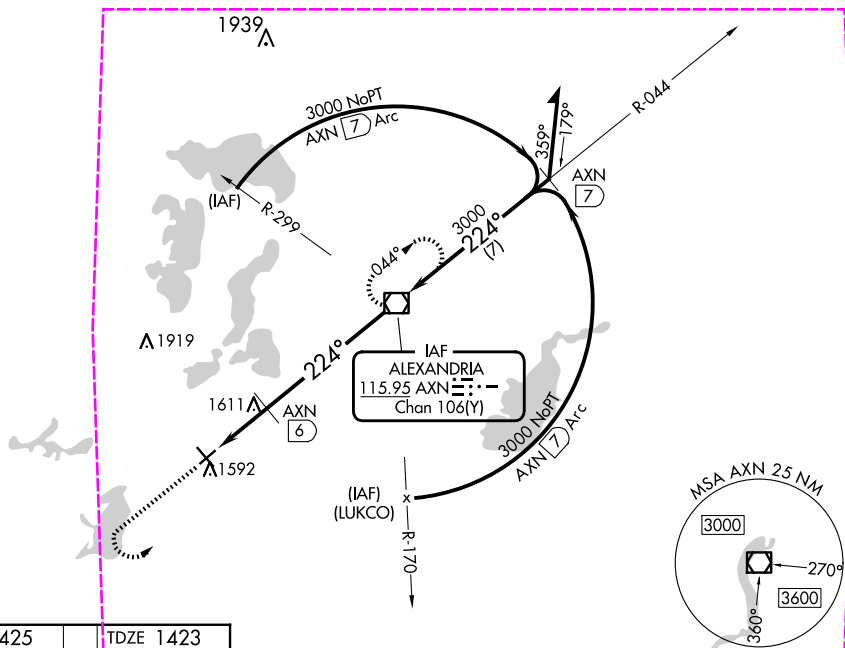
**T** Rwy 22 helicopter visibility reduction below  $\frac{3}{4}$  SM NA.

**MISSED APPROACH:** Climb to 2500 then climbing left turn to 3000 direct to AXN VOR/DME and hold.

ASOS  
118,375

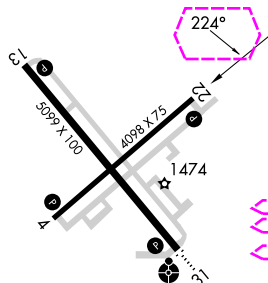
MINNEAPOLIS CENTER  
126.1 269.2

UNICOM  
123.0 (CTAF) **L**



ELEV 1425

TDZE 1423

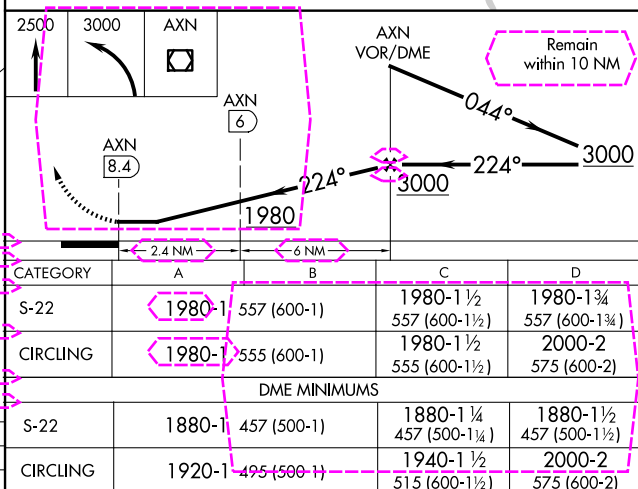


REIL Rwys 4, 13, and 22 **L**  
MIRL Rwys 4-22 and 13-31 **L**

FAF to MAP 8.4 NM

Knots	60	90	120	150	180
Min:Sec	8:24	5:36	4:12	3:22	2:48

ALEXANDRIA, MINNESOTA  
Amdt 15B 20MAY21



ALEXANDRIA RGNL/CHANDLER FLD (AXN)  
VOR RWY 22

45°52'N-95°24'W

VOR/DME AXN <b>115.95</b> Chan <b>106</b> (Y)	APP CRS <b>224°</b>	Rwy Ldg <b>4098</b> TDZE <b>1424</b> Apt Elev <b>1425</b>
---	------------------------	---

VOR RWY 22  
ALEXANDRIA RGNL/CHANDLER FLD (AXN)

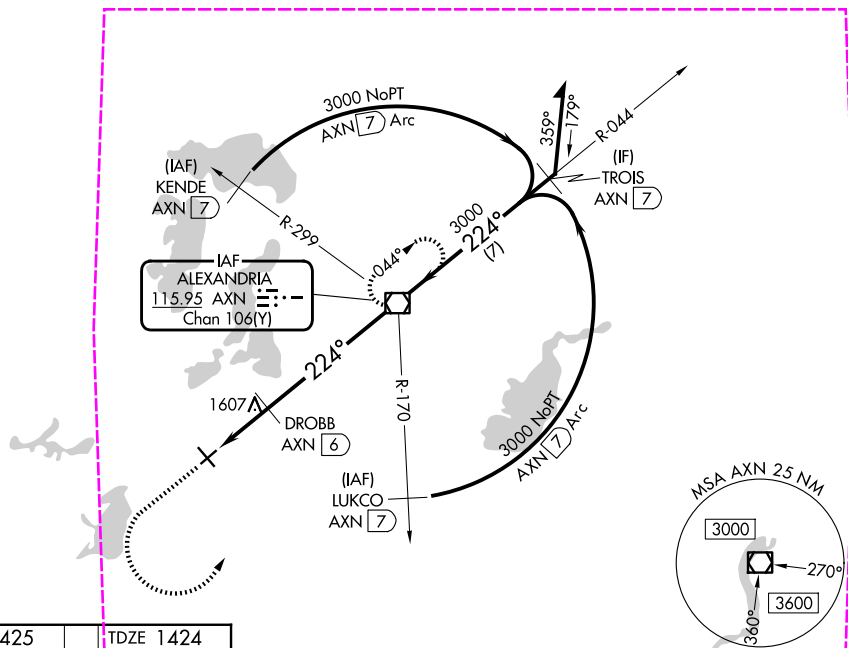
**T** Rwy 22 helicopter visibility reduction below  $\frac{3}{4}$  SM NA  
**A** When local altimeter setting not received, use GHW  
 altimeter setting and increase all MDAs 40 feet.

**MISSED APPROACH:** Climb to 2500 then climbing left turn to 3000 direct to AXN VOR/DME and hold.

ASOS  
118.375

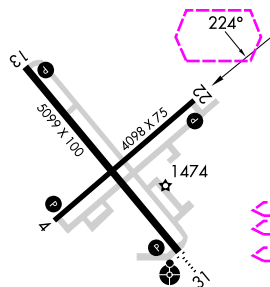
MINNEAPOLIS CENTER  
126.1 269.2

UNICOM  
123.0 (CTAF) **L**



ELEV 1425

TDZE 1424



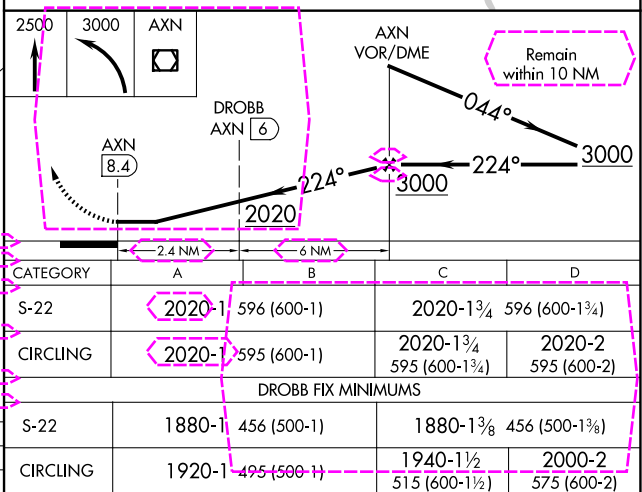
REIL Rwys 4, 13, and 22 **L**  
MIRL Rwys 4-22 and 13-31 **L**

FAF to MAP 8.4 NM

Knots	60	90	120	150	180
Min:Sec	8:24	5:36	4:12	3:22	2:48

ALEXANDRIA, MINNESOTA

Amdt 15C 07AUG25



ALEXANDRIA RGNL/CHANDLER FLD (AXN)

VOR RWY 22

45°52'N-95°24'W

INC-1, 07 AUG 2025 to 04 SEP 2025

NC-1, 07 AUG 2025 to 04 SEP 2025