

ALEXANDRIA, MINNESOTA

AL-14 (FAA)

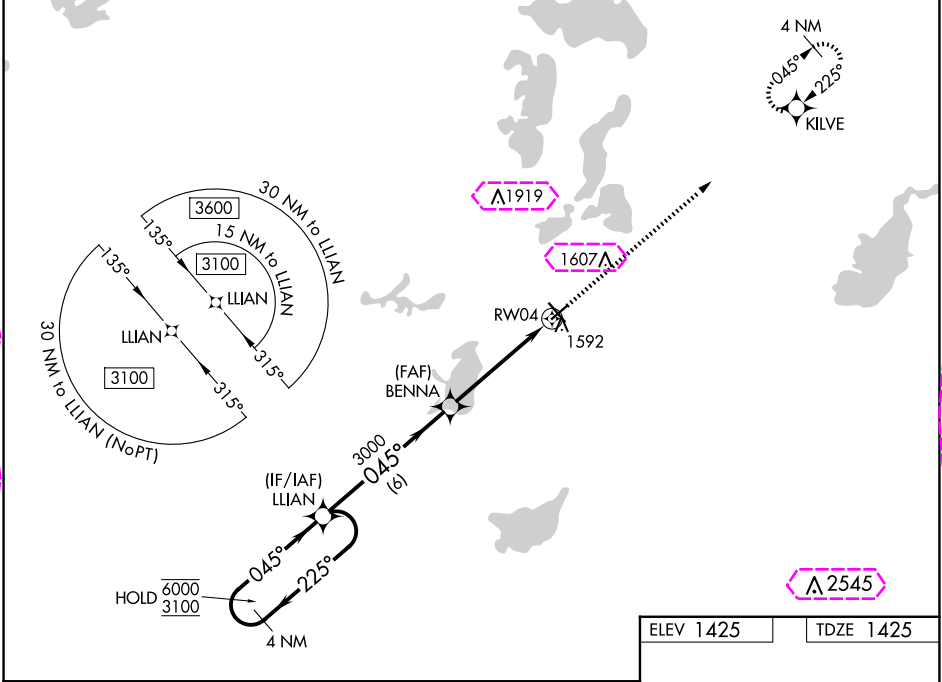
24193

WAAS CH 90245 W04A	APP CRS 045°	Rwy Idg 4098 TDZE 1425 Apt Elev 1425
--	------------------------	---

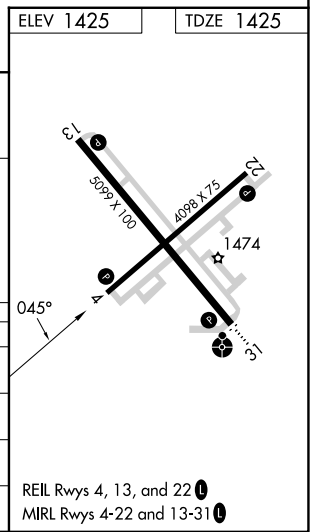
RNAV (GPS) RWY 4
ALEXANDRIA RGNL/CHANDLER FLD (AXN)

RNP APCH - GPS.	MISSED APPROACH: Climb to 3000 direct KILVE and hold.
Rwy 4 helicopter visibility reduction below ¾ SM NA. For uncompensated Baro-VNAV systems, LNAV/VNAV NA below -22°C or above 54°C.	

ASOS 118.375	MINNEAPOLIS CENTER 126.1 269.2	UNICOM 123.0 (CTAF) 1
------------------------	--	---------------------------------



4 NM Holding Pattern		LLAN		3000		KILVE			
6000 ← 225°				BENNA		↑		✦	
3100 → 045°				3000		1.2 NM to RWY04		RWY04	
GP 3.00°				3000					
TCH 44				6 NM		3.6 NM		1.2 NM	
CATEGORY		A		B		C		D	
LPV DA		1675-1 250 (300-1)							
LNAV/VNAV DA		1826-1½ 401 (500-1½)							
LNAV MDA		1860-1 435 (500-1)				1860-1¼ 435 (500-1¼)			
CIRCLING		1900-1 475 (500-1)				1940-1½ 515 (600-1½)		2000-2 575 (600-2)	



ALEXANDRIA, MINNESOTA
Orig 05OCT23

45°52'N-95°24'W

ALEXANDRIA RGNL/CHANDLER FLD (AXN)
RNAV (GPS) RWY 4

NC-1, 10 JUL 2025 to 07 AUG 2025

NC-1, 10 JUL 2025 to 07 AUG 2025

