

WAAS CH 61007 W31A	APP CRS 315°	Rwy Idg 5099 TDZE 1423 Apt Elev 1425
--	------------------------	---

RNAV (GPS) RWY 31

ALEXANDRIA RGNL/CHANDLER FLD (AXN)

⚠ Inoperative table does not apply to LPV & LNAV/VNAV Cats A/B/C and LNAV Cat C. For uncompensated Baro-VNAV systems, DME/VNAV NA below -17°C (2°F) or above 46°C (114°F). DME/DME RNP -0.3 NA. VDP and Baro-VNAV NA when using Glenwood altimeter setting. When local altimeter setting not received, use Glenwood altimeter setting and increase all DAs/MDAs 40 feet and increase LPV and LNAV/VNAV visibilities ¼ mile all Cats.

ODALS



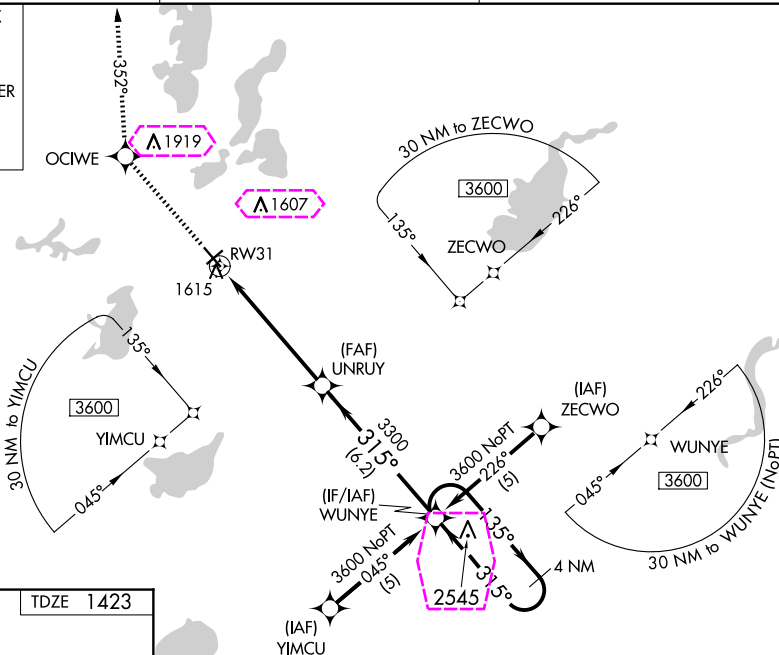
MISSED APPROACH: Climb to 3500 direct
OCIWE and via 352° track to TILER and
hold.

ASOS
118.375

MINNEAPOLIS CENTER
126.1 269.2

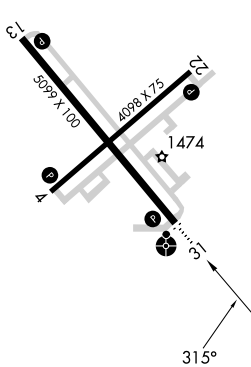
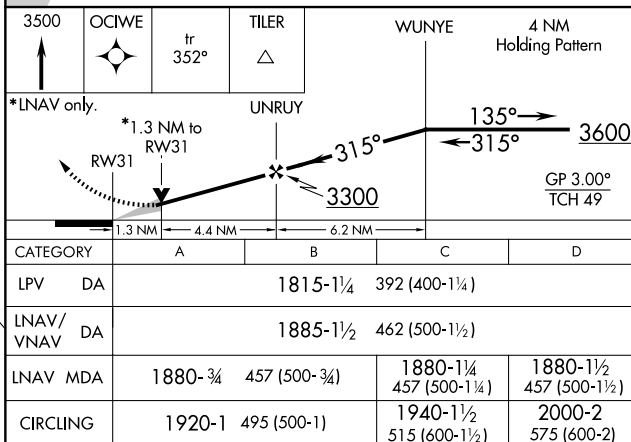
UNICOM
123.0 (CTAF) **L**

MISSED APCH FIX



ELEV	1425
------	------

TDZE 1423

REIL Rwy 4, 13, and 22 L
MIRI Rwy 4-22 and 13-31 I

ALEXANDRIA, MINNESOTA

Amdt 1A 20MAY21

ALEXANDRIA RGNL/CHANDLER FLD (AXN)

45°52'N-95°24'W

RNAV (GPS) RWY 31

NC-1, 10 JUL 2025 to 07 AUG 2025

NC-1, 10 JUL 2025 to 07 AUG 2025

WAAS CH 61007 W31A	APP CRS 315°	Rwy Ldg 5099 TDZE 1423 Apt Elev 1425
--	------------------------	---

RNAV (GPS) RWY 31

ALEXANDRIA RGNL/CHANDLER FLD (AXN)

⚠ Inoperative table does not apply to LPV & LNAV/VNAV Cats A/B/C and LNAV Cat C. For uncompensated Baro-VNAV systems, DME/VNAV NA below -17°C (2°F) or above 46°C (114°F). DME/DME RNP -0.3 NA. VDP and Baro-VNAV NA when using Glenwood altimeter setting. When local altimeter setting not received, use Glenwood altimeter setting and increase all DAs/MDAs 40 feet and increase LPV and LNAV/VNAV visibilities ¼ mile all Cats.

ODALS



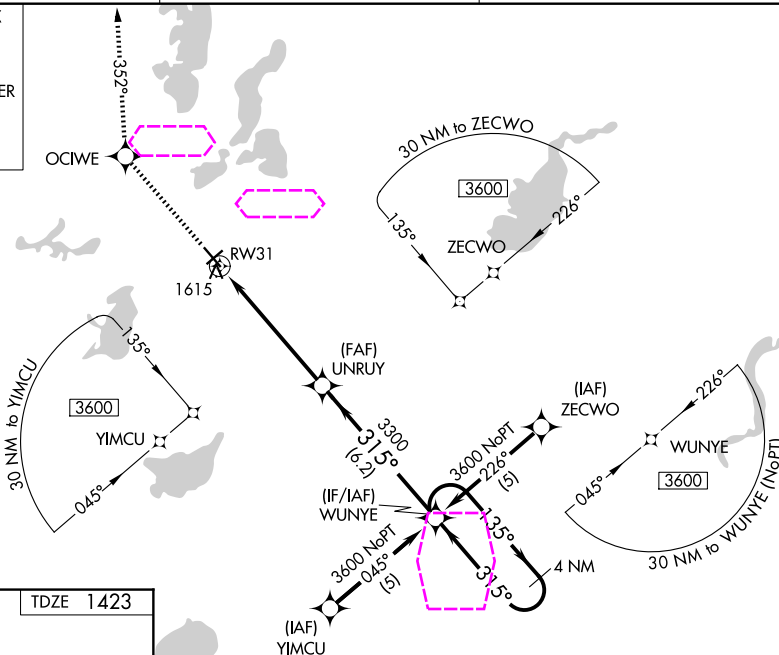
MISSED APPROACH: Climb to 3500 direct OCIWE and via 352° track to TILER and hold.

ASOS
118.375

MINNEAPOLIS CENTER
126.1 269.2

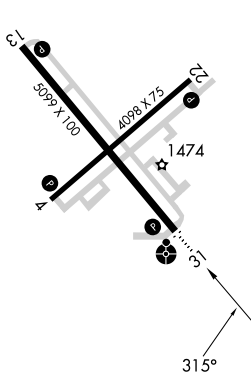
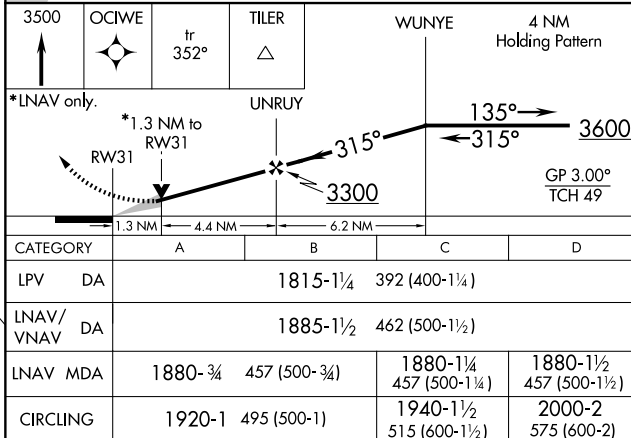
UNICOM
123.0 (CTAF) **L**

MISSED APCH FIX



ELEV	1425
------	------

TDZE 1423

REIL Rwy 4, 13, and 22 L
MIRI Rwy 4-22 and 13-31 I

ALEXANDRIA, MINNESOTA

Amdt 1A 20MAY21

ALEXANDRIA RGNL/CHANDLER FLD (AXN)

45°52'N-95°24'W

RNAV (GPS) RWY 31

NC-1, 07 AUG 2025 to 04 SEP 2025

NC-1, 07 AUG 2025 to 04 SEP 2025