

ALEXANDRIA, MINNESOTA

AL-14 (FAA)

24193

WAAS CH 48917 W22A	APP CRS 225°	Rwy Idg 4098 TDZE 1424 Apt Elev 1425
--	------------------------	--

RNAV (GPS) RWY 22

ALEXANDRIA RGNL/CHANDLER FLD (AXN)

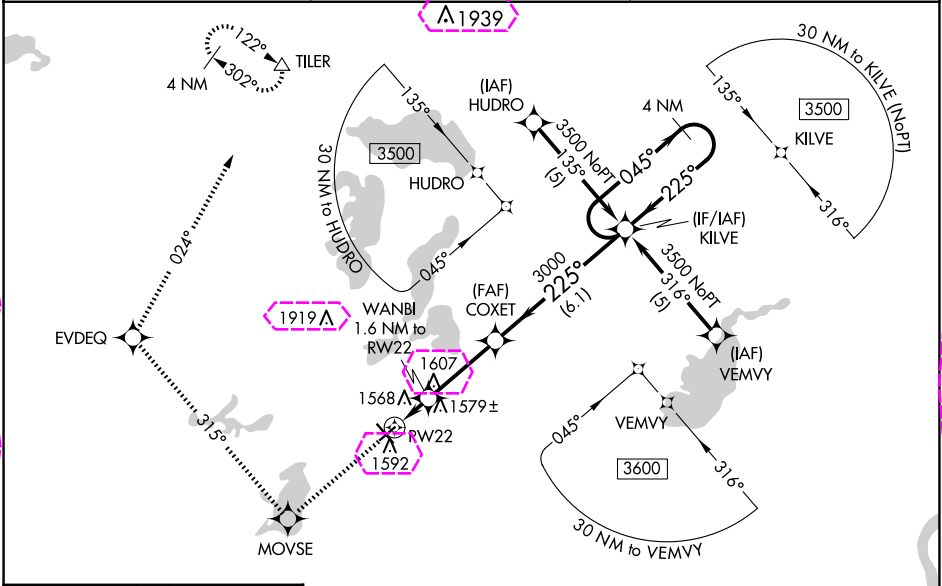
RNP APCH.

Baro-VNAV NA when using Glenwood altimeter setting. For uncompensated Baro-VNAV systems, LNAV/VNAV NA below -17°C or above 46°C.

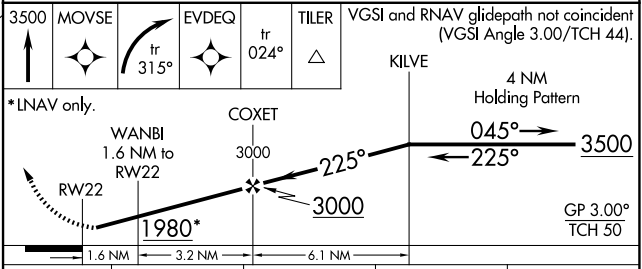
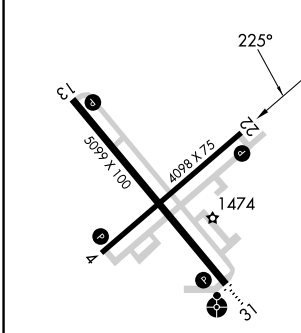
When local altimeter setting not received, use Glenwood altimeter setting and increase all DA 37 feet and all MDA 40 feet, increase LNAV/VNAV all Cats and LNAV Cat D visibility ¼ mile. Rwy 22 helicopter visibility reduction below ¾ SM NA.

MISSED APPROACH: Climb to 3500 direct MOVSE and right turn on track 315° to EVDEQ and on track 024° to TILER and hold.

ASOS 118.375	MINNEAPOLIS CENTER 126.1 269.2	UNICOM 123.0 (CTAF) 0
------------------------	--	---------------------------------



ELEV 1425	TDZE 1424
-----------	-----------



CATEGORY	A	B	C	D
LPV DA	1677-1 253 (300-1)			
LNAV/VNAV DA	1880-1½ 456 (500-1½)			
LNAV MDA	1840-1 416 (500-1)		1840-1¼ 416 (500-1¼)	

REIL Rws 4, 13, and 22 0
MIRL Rws 4-22 and 13-31 0

ALEXANDRIA, MINNESOTA

Orig-B 18JUL19

ALEXANDRIA RGNL/CHANDLER FLD (AXN)

45°52'N-95°24'W

RNAV (GPS) RWY 22

NC-1, 10 JUL 2025 to 07 AUG 2025

NC-1, 10 JUL 2025 to 07 AUG 2025

ALEXANDRIA, MINNESOTA

AL-14 (FAA)

25219

WAAS CH 48917 W22A	APP CRS 225°	Rwy Ldg TDZE 1424 Apt Elev 1425
--	------------------------	---

RNAV (GPS) RWY 22
ALEXANDRIA RGNL/CHANDLER FLD (AXN)

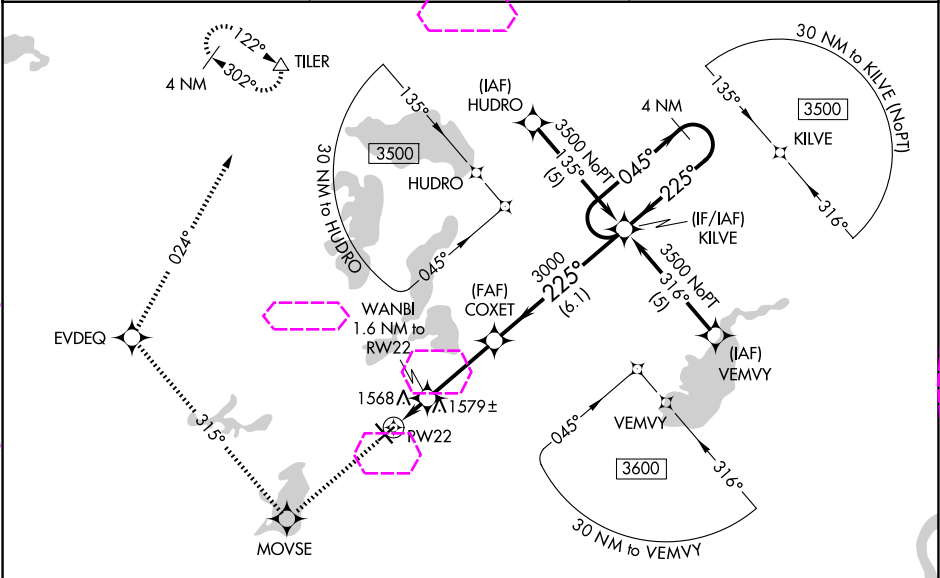
RNP APCH.

Baro-VNAV NA when using Glenwood altimeter setting. For uncompensated Baro-VNAV systems, LNAV/VNAV NA below -17°C or above 46°C.

When local altimeter setting not received, use Glenwood altimeter setting and increase all DA 37 feet and all MDA 40 feet, increase LNAV/VNAV all Cats and LNAV Cat D visibility ¼ mile. Rwy 22 helicopter visibility reduction below ¾ SM NA.

MISSED APPROACH: Climb to 3500 direct MOVSE and right turn on track 315° to EVDEQ and on track 024° to TILER and hold.

ASOS 118.375	MINNEAPOLIS CENTER 126.1 269.2	UNICOM 123.0 (CTAF) 0
------------------------	--	---------------------------------



ELEV 1425 TDZE 1424

3500	MOVSE	EVDEQ	tr 315°	TILER	tr 024°	△	VGSI and RNAV glidepath not coincident (VGSI Angle 3.00/TCH 44).
*LNAV only.							KILVE
WANJI 1.6 NM to RW22							4 NM Holding Pattern
COXET 3000							045° → 3500
RW22 1980*							← 225°
1.6 NM 3.2 NM 6.1 NM							GP 3.00° TCH 50
CATEGORY	A	B	C	D			
LPV	DA	1677-1 253 (300-1)					
LNAV/VNAV	DA	1880-1½ 456 (500-1½)					
LNAV	MDA	1840-1 416 (500-1)		1840-1¼ 416 (500-1¼)			