

LOC I-EEZ	APP CRS	Rwy Idg	<b>5099</b>
<b><u>110.5</u></b>	<b>315°</b>	TDZE	<b>1423</b>
		Appt Elev	<b>1425</b>

ILS or LOC RWY 31  
ALEXANDRIA RGNL/CHANDLER FLD (AXN)

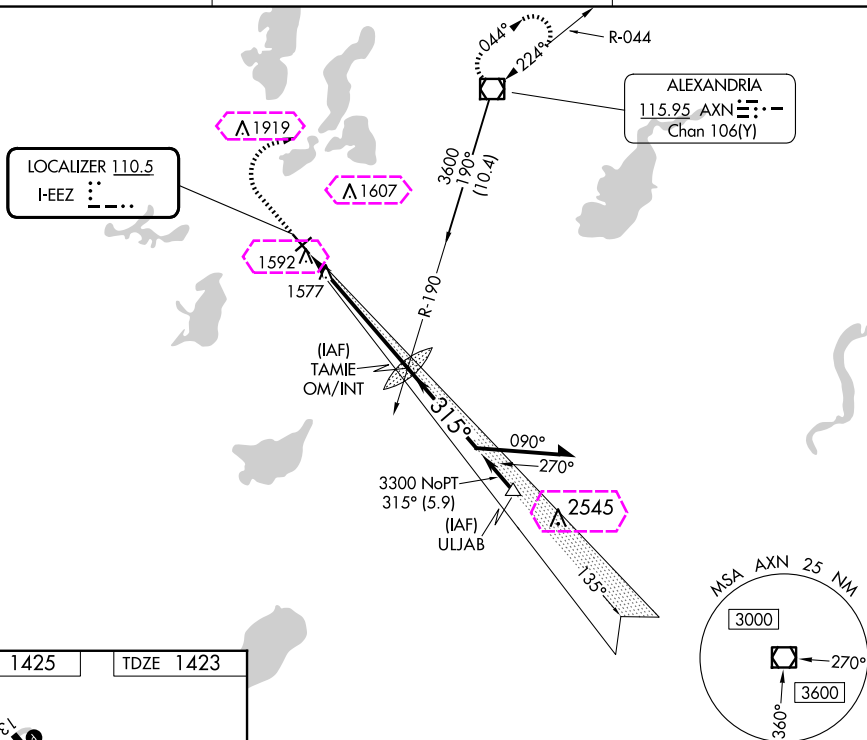
**T**  
**A**NA Inoperative table does not apply to S-LOC 31  
Category C.

ODALS

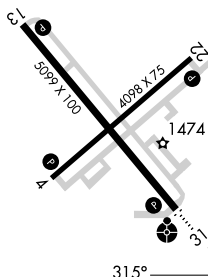
**MISSED APPROACH:** Climb to 2500 then climbing right turn to 3500 direct AXN VOR/DME and hold.

ASOS  
118.375

MINNEAPOLIS CENTER  
126.1 269.2

UNICOM  
123.0 (CTAF) **L**

ELEV 1425		TDZE 1423
-----------	--	-----------

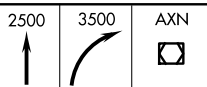
REIL Rwy 4, 13, and 22 **L**MIRL Rwy 4-22 and 13-31 **L**

FAF to MAP 5.4 NM

Knots	60	90	120	150	180
Min:Sec	5:24	3:36	2:42	2:10	1:48

ALEXANDRIA, MINNESOTA

Orig-E 20MAY21



TAMIE  
OM/INT

Remain  
within 10 NM

3210

1.34

3600

3

GS 3.00°  
TCH 49

— 5.4 NM —

CATEGORY	A	B	C	D
S-ILS 31	1673- $\frac{3}{4}$ 250 (300- $\frac{3}{4}$ )			
S-LOC 31	1840- $\frac{3}{4}$ 417 (500- $\frac{3}{4}$ )		1840-1 $\frac{1}{4}$ 417 (500-1 $\frac{1}{4}$ )	
CIRCLING	1920-1 495 (500-1)		1940-1 $\frac{1}{2}$ 515 (600-1 $\frac{1}{2}$ )	2000-2 575 (600-2)

ALEXANDRIA RGNL/CHANDLER FLD (AXN)

45°52'N-95°24'W

ILS or LOC RWY 31

NC-1, 10 JUL 2025 to 07 AUG 2025

NC-1, 10 JUL 2025 to 07 AUG 2025

ALEXANDRIA, MINNESOTA

AL-14 (FAA)

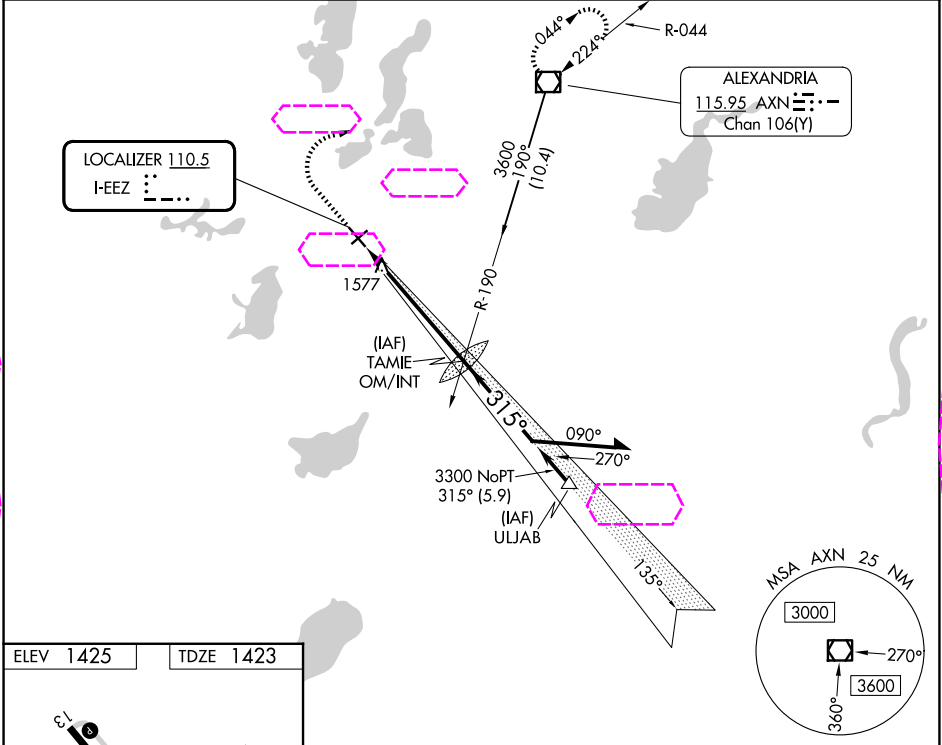
25219

LOC I-EEZ <b>110.5</b>	APP CRS <b>315°</b>	Rwy Ldg TDZE Apt Elev <b>5099</b> <b>1423</b> <b>1425</b>
---------------------------	------------------------	--

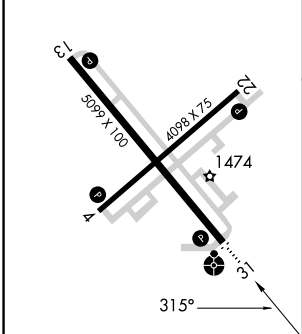
ILS or LOC RWY 31  
ALEXANDRIA RGNL/CHANDLER FLD (AXN)

<b>NA</b> Inoperative table does not apply to S-LOC 31 Category C.	ODALS 	MISSED APPROACH: Climb to 2500 then climbing right turn to 3500 direct AXN VOR/DME and hold.
--	-----------	---

ASOS <b>118.375</b>	MINNEAPOLIS CENTER <b>126.1 269.2</b>	UNICOM <b>123.0 (CTAF)</b>
------------------------	--	-------------------------------



ELEV 1425	TDZE 1423
-----------	-----------



REIL Rwy 4, 13, and 22  
MIRL Rwy 4-22 and 13-31  
FAF to MAP 5.4 NM

Knots	60	90	120	150	180
Min:Sec	5:24	3:36	2:42	2:10	1:48

ALEXANDRIA, MINNESOTA  
Orig-E 20MAY21

	2500	3500	AXN	
				TAMIE OM/INT
				3210
				135°
				3600
				315°
				3300
				GS 3.00°
				TCH 49
				5.4 NM
CATEGORY	A	B	C	D
S-ILS 31	1673-3/4 250 (300-3/4)			
S-LOC 31	1840-3/4 417 (500-3/4)		1840-1/4 417 (500-1/4)	
CIRCLING	1920-1 495 (500-1)		1940-1 1/2 515 (600-1 1/2)	
			2000-2 575 (600-2)	

45°52'N-95°24'W

ALEXANDRIA RGNL/CHANDLER FLD (AXN)

ILS or LOC RWY 31

NC-1, 07 AUG 2025 to 04 SEP 2025

NC-1, 07 AUG 2025 to 04 SEP 2025