

ALBUQUERQUE, NEW MEXICO

AL-12 (FAA)

25163

VORTAC ABQ	APP CRS	Rwy Ldg	12793
113.2	077°	TDZE	5320
Chan 79		Apt Elev	5355

VOR RWY 8

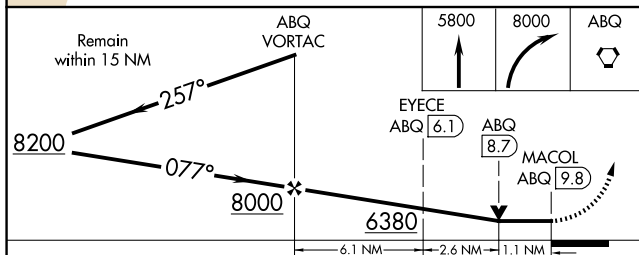
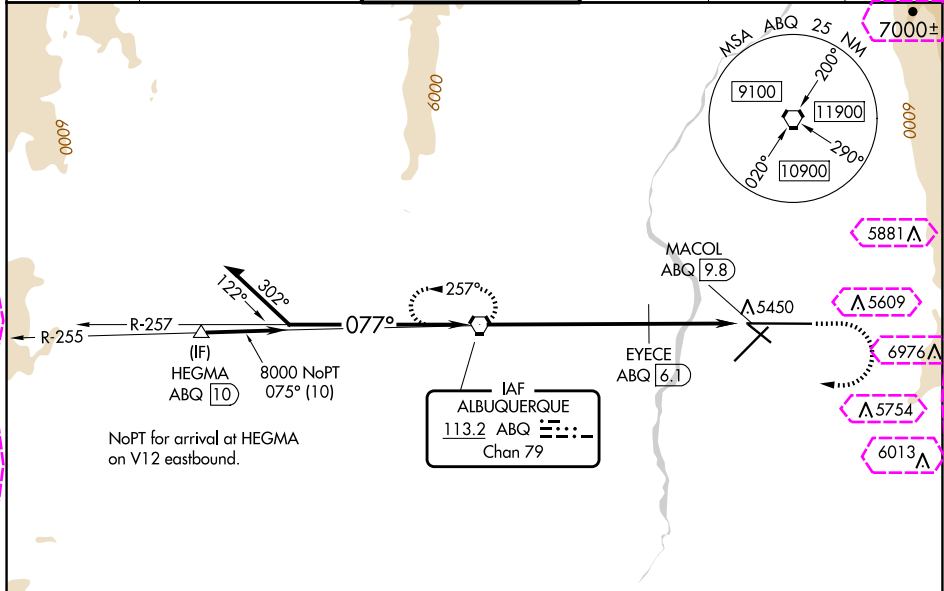
ALBUQUERQUE INTL SUNPORT (ABQ)

▲ EYECE FIX MINIMUMS: For inop ALS, increase S-8 Cat C/D/E visibility to RVR 5500.
ASR For inop ALS, increase S-8 Cat E visibility to 3 SM.
Circling Cat E NA southeast of Rwy 3-21 and northeast of Rwy 12-30.

MALSR

MISSED APPROACH: Climb to 5800 then climbing right turn to 8000 direct ABQ VORTAC and hold.

D-ATIS	ALBUQUERQUE APP CON	ALBUQUERQUE TOWER	GND CON	CLNC DEL	CPDLC
118.0 257.7	123.9 354.1	120.3 351.9	121.9 348.6	119.2 259.3	



CATEGORY	A	B	C	D	E
S-8	6380/40 1060 (1100-¾)	6380/55 1060 (1100-1)	6380-2½	1060 (1100-2½)	
CIRCLING	6380-1¼ 1025 (1100-¼)	6380-1½ 1025 (1100-½)	6380-3 1105 (1200-3)	6460-3 2105 (2200-3)	7460-3
EYECE FIX MINIMUMS					
S-8	5700/24	380 (400-½)	5700/40	380 (400-¾)	
CIRCLING	5840-1 485 (500-1)	5920-1 565 (600-1)	5940-1½ 585 (600-½)	6460-3 1105 (1200-3)	7460-3 2105 (2200-3)

ELEV 5355 TDZE 5320

TWR 5533
13793 X 150
0.5% DOWN

MIRL Rwy 12-30
TDZ/CL Rwys 3 and 8
HIRL Rwys 3-21 and 8-26
REIL Rwys 21, 26, and 30

FAF to MAP 9.8 NM

Knots	60	90	120	150	180
Min:Sec	9:48	6:32	4:54	3:55	3:16

ALBUQUERQUE, NEW MEXICO
Amdt 21 02MAR17

35°02'N-106°36'W

ALBUQUERQUE INTL SUNPORT (ABQ)
VOR RWY 8

ALBUQUERQUE, NEW MEXICO

AL-12 (FAA)

25219

VORTAC ABQ	APP CRS	Rwy Ldg
113.2	077°	12793
Chan 79		5320
		Apt Elev 5355

VOR RWY 8

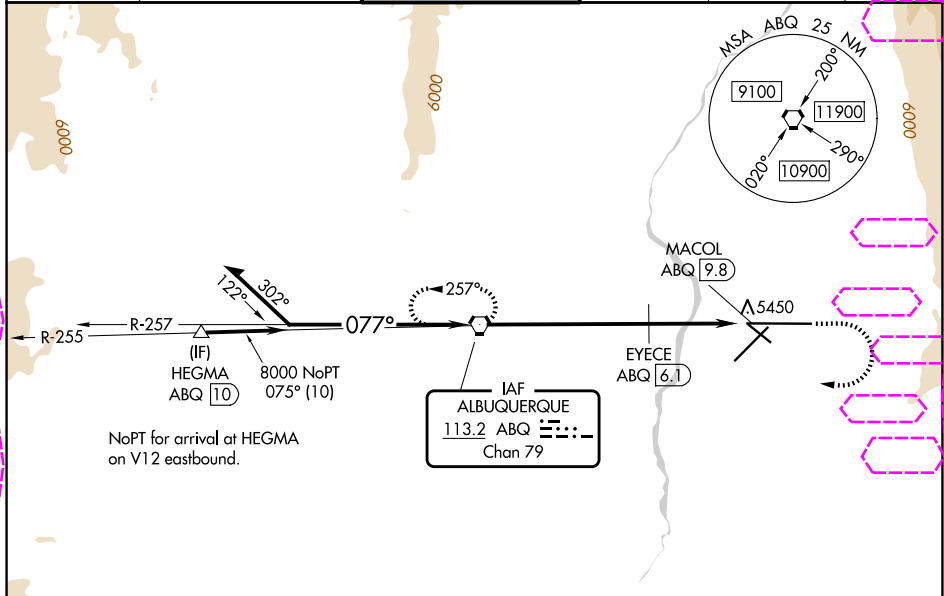
ALBUQUERQUE INTL SUNPORT (ABQ)

▲ EYECE FIX MINIMUMS: For inop ALS, increase S-8 Cat C/D/E visibility to RVR 5500.
ASR For inop ALS, increase S-8 Cat E visibility to 3 SM.
Circling Cat E NA southeast of Rwy 3-21 and northeast of Rwy 12-30.

MALSR

MISSED APPROACH: Climb to 5800 then climbing right turn to 8000 direct ABQ VORTAC and hold.

D-ATIS	ALBUQUERQUE APP CON	ALBUQUERQUE TOWER	GND CON	CLNC DEL	CPDLC
118.0 257.7	123.9 354.1	120.3 351.9	121.9 348.6	119.2 259.3	



ELEV 5355		D TDZE 5320	
Remain within 15 NM		ABQ VORTAC	
8200		EYECE ABQ (6.1)	
257°		ABQ (8.7)	
077°		MACOL ABQ (9.8)	
8000		6380	
6.1 NM		2.6 NM	
1.1 NM		5800	
8000		ABQ	
CATEGORY		A	
S-8		6380/40	
1060 (1100-¾)		6380/55	
1060 (1100-1)		6380-2½	
1025 (1100-1¼)		1060 (1100-2½)	
CIRCLING		6380-1½	
1025 (1100-1¼)		6380-3	
EYECE FIX MINIMUMS		6460-3	
S-8		5700/24	
380 (400-½)		5700/40	
380 (400-¾)		7460-3	
CIRCLING		5840-1	
485 (500-1)		5920-1	
565 (600-1)		5940-1½	
585 (600-1½)		6460-3	
1105 (1200-3)		7460-3	
2105 (2200-3)		Knots	
60		90	
120		150	
180		Min:Sec	
9:48		6:32	
4:54		3:55	
3:16		FAF to MAP 9.8 NM	

ALBUQUERQUE, NEW MEXICO
Amdt 21 02MAR17

35°02'N-106°36'W

ALBUQUERQUE INTL SUNPORT (ABQ)
VOR RWY 8

SW-1, 07 AUG 2025 to 04 SEP 2025

SW-1, 07 AUG 2025 to 04 SEP 2025