

ALBUQUERQUE, NEW MEXICO

AL-12 (FAA)

25163

APP CRS	Rwy Ldg	12793
079°	TDZE	5320
	Apt Elev	5355

# RNAV (RNP) Z RWY 8

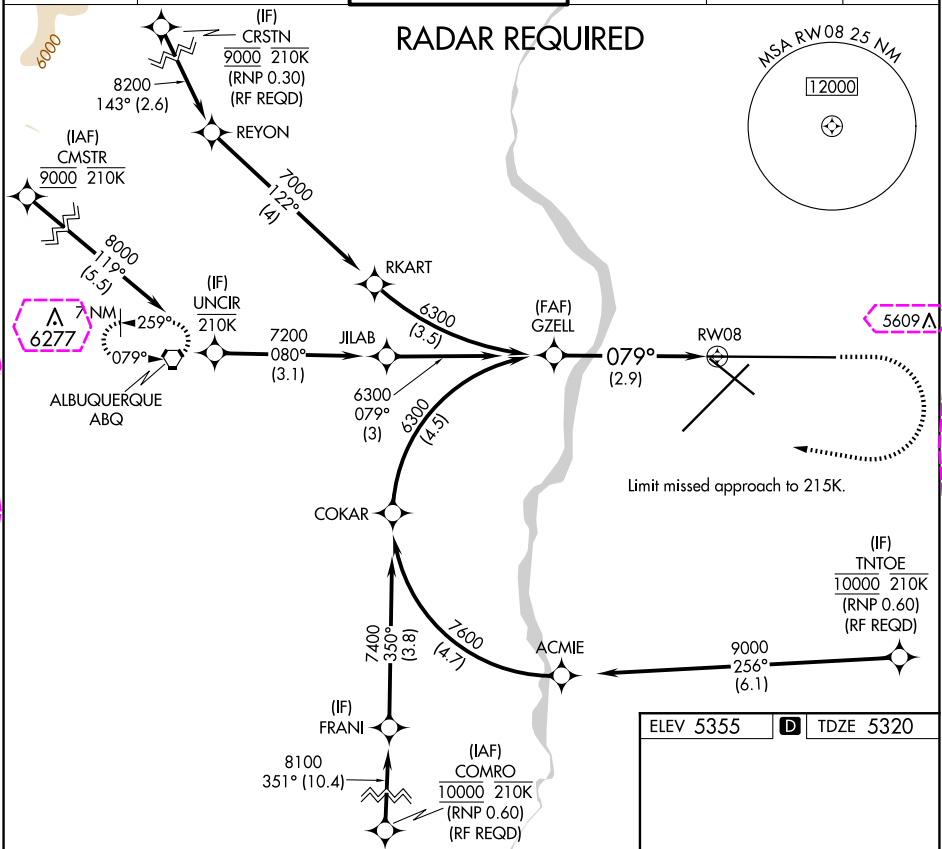
ALBUQUERQUE INTL SUNPORT (ABQ)

**ASR** For uncompensated Baro-VNAV systems, procedure NA below -12°C (11°F) or above 47°C (117°F). For inop MALSR, increase RNP 0.30 all Cnts visibility to RVR 4700. GPS required.

**MALSR**

**MISSED APPROACH:** Climb to 5900 then climbing right turn to 8000 direct ABQ VORTAC and hold.

D-ATIS	ALBUQUERQUE APP CON	ALBUQUERQUE TOWER	GND CON	CLNC DEL	CPDLC
118.0 257.7	123.9 354.1	120.3 351.9	121.9 348.6	119.2 259.3	



GZELL		VGSi and RNAV glidepath not coincident (VGSi Angle 2.95/TCH 55).		5900	8000	ABQ
6300		079°		RW08		
GP 3.00° TCH 54						
CATEGORY	A	B	C	D		
RNP 0.30 DA	5619/24 299 (300-½)					
AUTHORIZATION REQUIRED						

ELEV 5355 **D** TDZE 5320

**TWR** 5533

13793 X 150

6000 X 150

10000 X 150

0.5% DOWN

MIRL Rwy 12-30

TDZ/CL Rwys 3 and 8

HIRL Rwys 3-21 and 8-26

REIL Rwys 21, 26, and 30

SW-1, 10 JUL 2025 to 07 AUG 2025

SW-1, 10 JUL 2025 to 07 AUG 2025

ALBUQUERQUE, NEW MEXICO

Amdt 1A 10DEC15

35°02'N-106°36'W

ALBUQUERQUE INTL SUNPORT (ABQ)

# RNAV (RNP) Z RWY 8

ALBUQUERQUE, NEW MEXICO

AL-12 (FAA)

25219

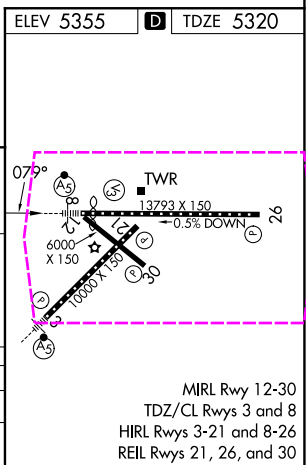
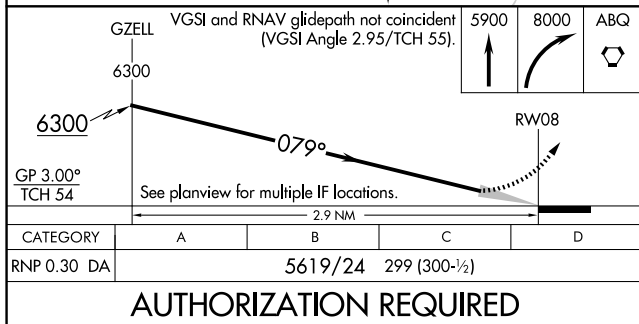
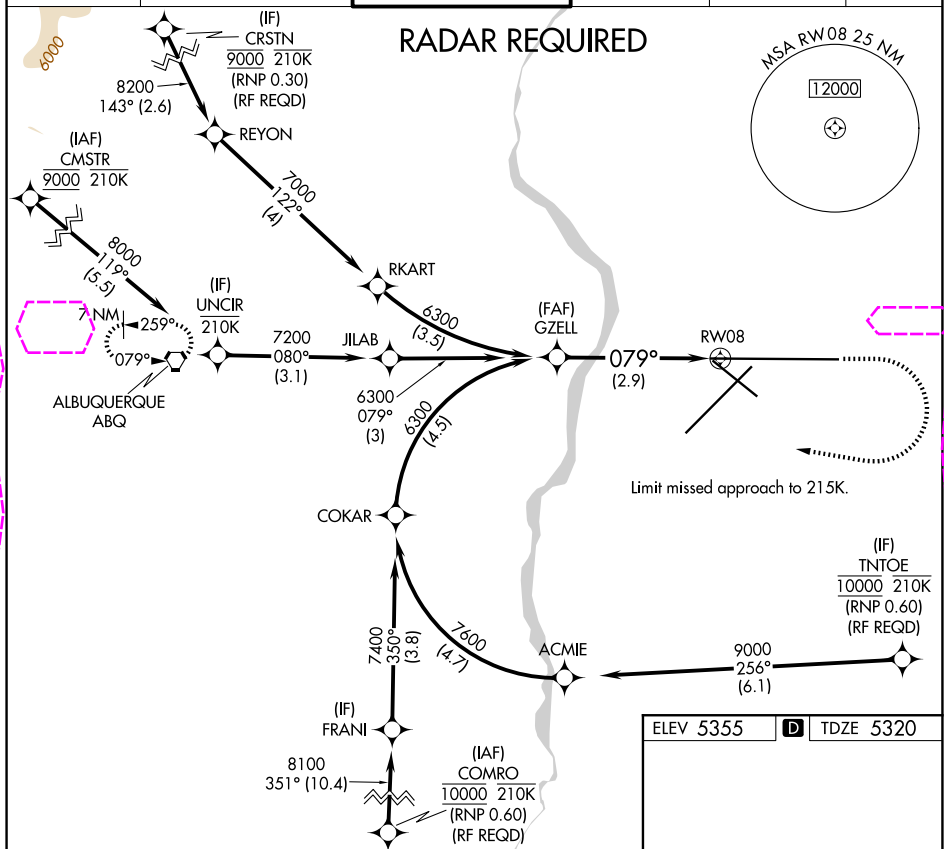
APP CRS	Rwy Ldg	12793
079°	TDZE	5320
	Apt Elev	5355

# RNAV (RNP) Z RWY 8

ALBUQUERQUE INTL SUNPORT (ABQ)

ASR	For uncompensated Baro-VNAV systems, procedure NA below -12°C (11°F) or above 47°C (117°F). For inop MALSR, increase RNP 0.30 all Cnts visibility to RVR 4700. GPS required.	MALSR	MISSED APPROACH: Climb to 5900 then climbing right turn to 8000 direct ABQ VORTAC and hold.
-----	--	-------	---

D-ATIS	ALBUQUERQUE APP CON	ALBUQUERQUE TOWER	GND CON	CLNC DEL	CPDLC
118.0 257.7	123.9 354.1	120.3 351.9	121.9 348.6	119.2 259.3	



SW-1, 07 AUG 2025 to 04 SEP 2025

SW-1, 07 AUG 2025 to 04 SEP 2025

ALBUQUERQUE, NEW MEXICO

Amdt 1A 10DEC15

35°02'N-106°36'W

ALBUQUERQUE INTL SUNPORT (ABQ)

RNAV (RNP) Z RWY 8