

ALBUQUERQUE, NEW MEXICO

AL-12 (FAA)

25163

APP CRS	Rwy Ldg	13793
259°	TDZE	5355
	Apt Elev	5355

# RNAV (RNP) Z RWY 26

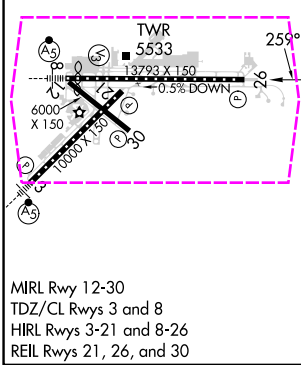
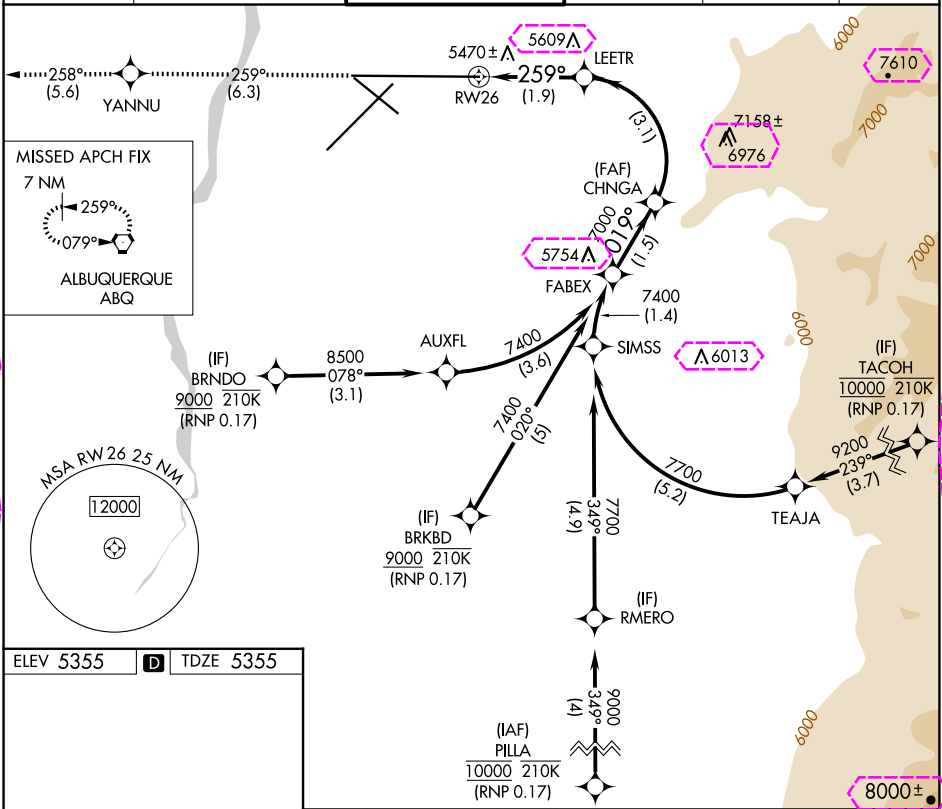
ALBUQUERQUE INTL SUNPORT (ABQ)

RNP AR APCH, RF required.

For uncompensated Baro-VNAV systems, procedure NA below -13°C or above 48°C.

MISSED APPROACH: Climb to 8000 on track 259° to YANNU and on track 258° to ABQ VORTAC and hold.

D-ATIS	ALBUQUERQUE APP CON	ALBUQUERQUE TOWER	GND CON	CLNC DEL	CPDLC
118.0 257.7	123.9 354.1	120.3 351.9	121.9 348.6	119.2 259.3	



8000	YANNU	tr 258°	ABQ	VGSI and RNAV glidepath not coincident (VGSI Angle 3.00/TCH 83).	FABEX
tr 259°				CHNGA	
				LEETR	
				RW26	
				6007	
				7000	
				7000	
				019°	
				7400	
				GP 3.00°	
				TCH 50	
				1.9 NM	
				3.1 NM	
				1.5 NM	
CATEGORY	A	B	C	D	
RNP 0.17 DA	5745-1¼	390 (400-1¼)			
AUTHORIZATION REQUIRED					

ALBUQUERQUE, NEW MEXICO  
Amdt 2A 16AUG18

35°02'N-106°36'W

ALBUQUERQUE INTL SUNPORT (ABQ)  
RNAV (RNP) Z RWY 26

SW-1, 10 JUL 2025 to 07 AUG 2025

SW-1, 10 JUL 2025 to 07 AUG 2025

APP CRS	Rwy Ldg	13793
259°	TDZE	5355
	Apt Elev	5355

RNAV (RNP) Z RWY 26  
ALBUQUERQUE INTL SUNPORT (ABQ)

RNP AR APCH, RF required.

**T** For uncompensated Baro-VNAV systems, procedure NA  
ASR below -13°C or above 48°C.

**MISSED APPROACH:** Climb to 8000 on track 259° to YANNU and on track 258° to ABQ VORTAC and hold.

D-ATIS  
118.0 257.7

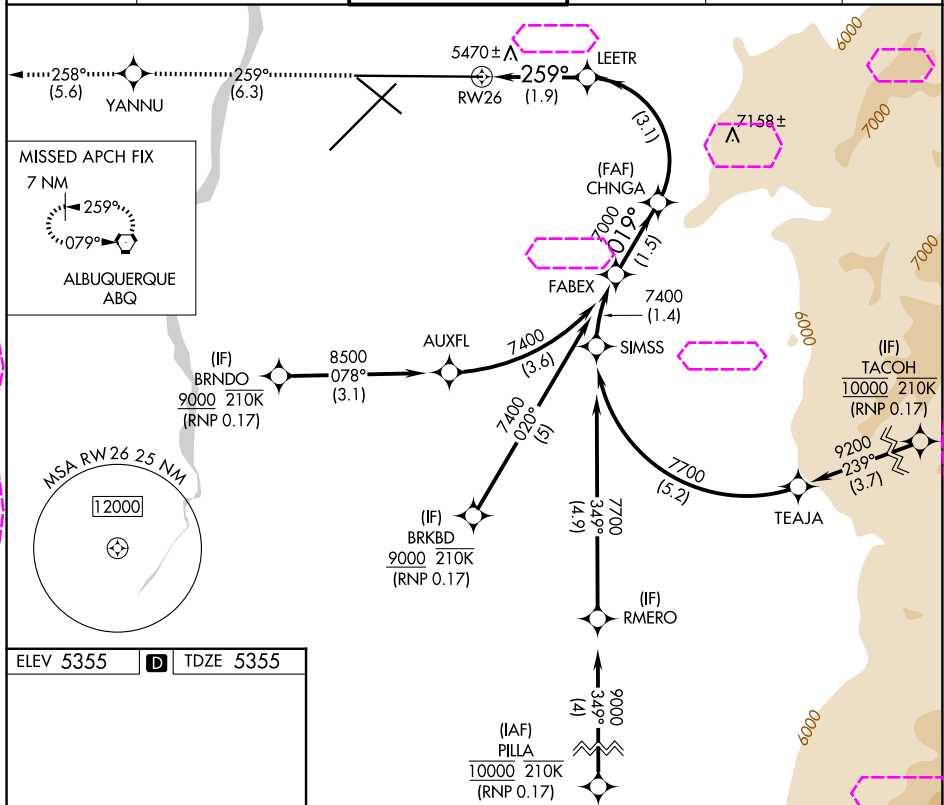
ALBUQUERQUE APP CON  
**123.9 354.1**

ALBUQUERQUE TOWER  
120.3 351.9

GND CON  
**121.9 348.6**

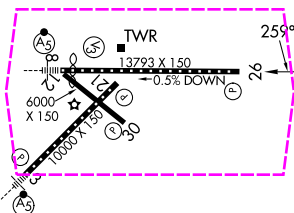
CLNC DEL  
**119.2 259.3**

CPDLC

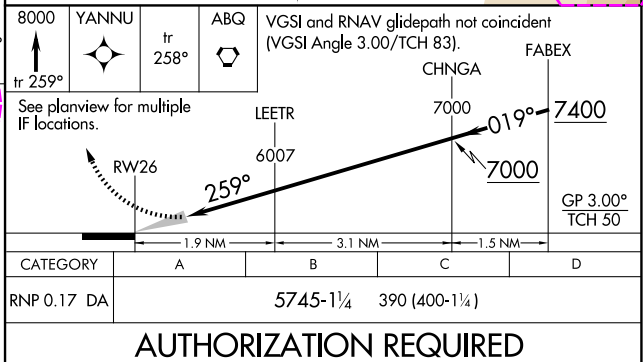


ELEV 5355	<b>D</b>	TDZE 5355
-----------	----------	-----------

Downloaded from <http://ajphaphysocpharm.sagepub.com/>



MIRL Rwy 12-30  
TDZ/CL Rwy 3 and 8  
HIRL Rwy 3-21 and 8-26  
REIL Rwy 21, 26, and 30

ALBUQUERQUE, NEW MEXICO  
Amdt 2A 16AUG18

35°02'N-106°36'W

ALBUQUERQUE INTL SUNPORT (ABQ)  
RNAV (RNP) Z RWY 26