

APP CRS 214°	Rwy Ldg TDZE Apt Elev	10000 5316 5355
------------------------	-----------------------------	--

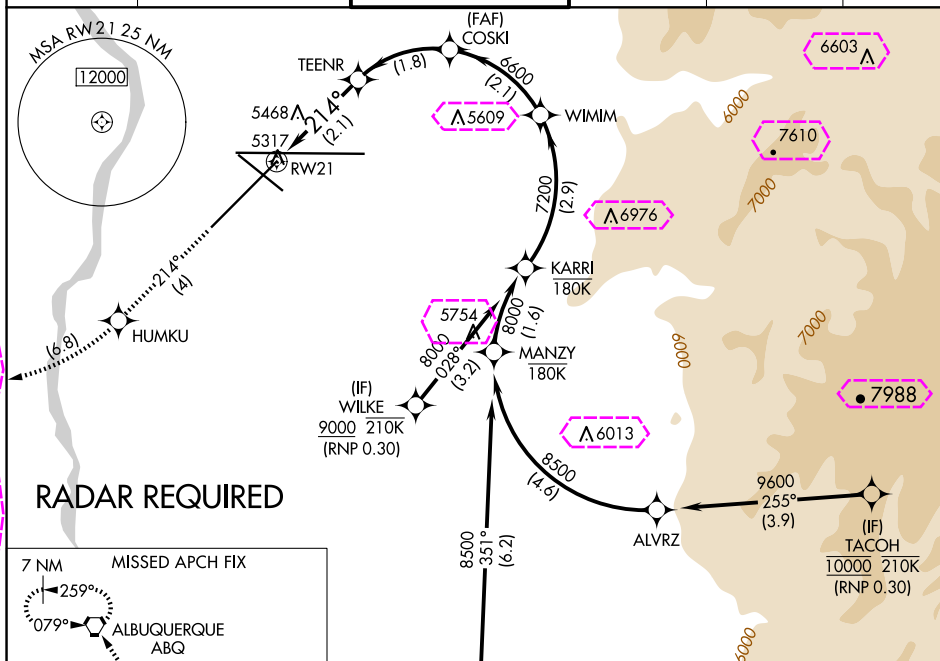
RNAV (RNP) Z RWY 21
ALBUQUERQUE INTL SUNPORT (ABQ)

T
ASR

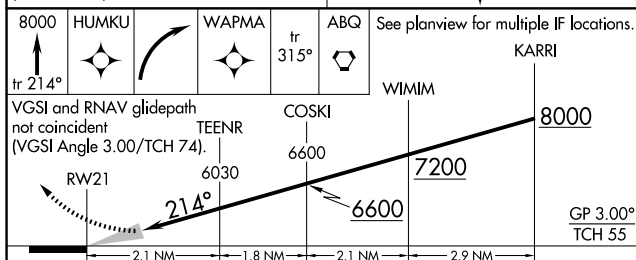
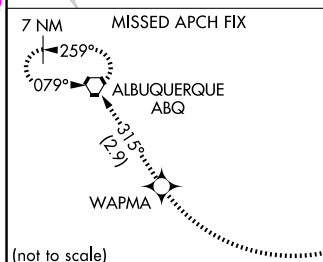
For uncompensated Baro-VNAV systems, procedure NA below -12°C (11°F) or above 47°C (116°F).
RF required. GPS required.

MISSED APPROACH: Climb to 8000 on track 214° to HUMKU, right turn to WAPMA, then on track 315° to ABQ VORTAC and hold.

D-ATIS	ALBUQUERQUE APP CON	ALBUQUERQUE TOWER	GND CON	CLNC DEL	CPDLC
118.0 257.7	123.9 354.1	120.3 351.9	121.9 348.6	119.2 259.3	

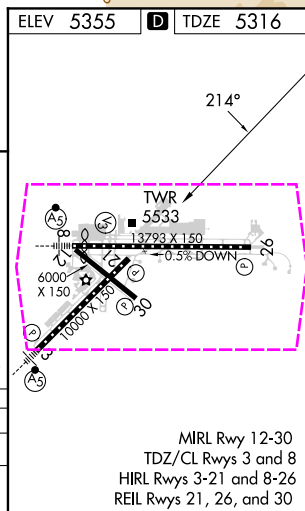


RADAR REQUIRED



CATEGORY	A	B	C	D
RNP 0.30 DA	5755-1½ 439 (400-1½)			

AUTHORIZATION REQUIRED



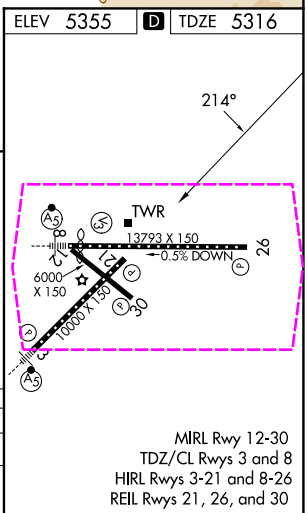
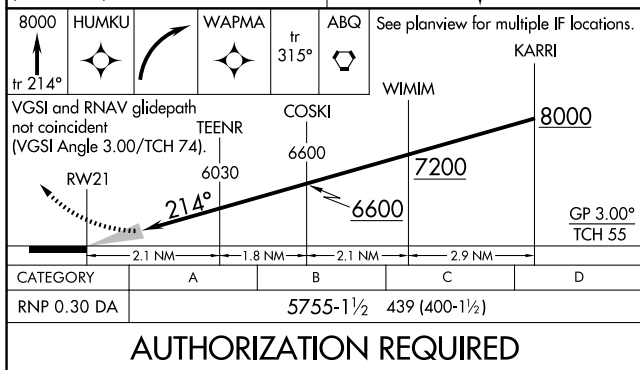
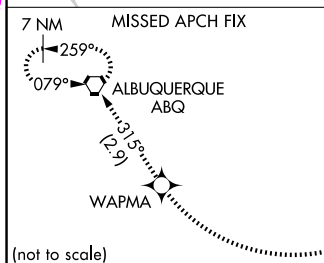
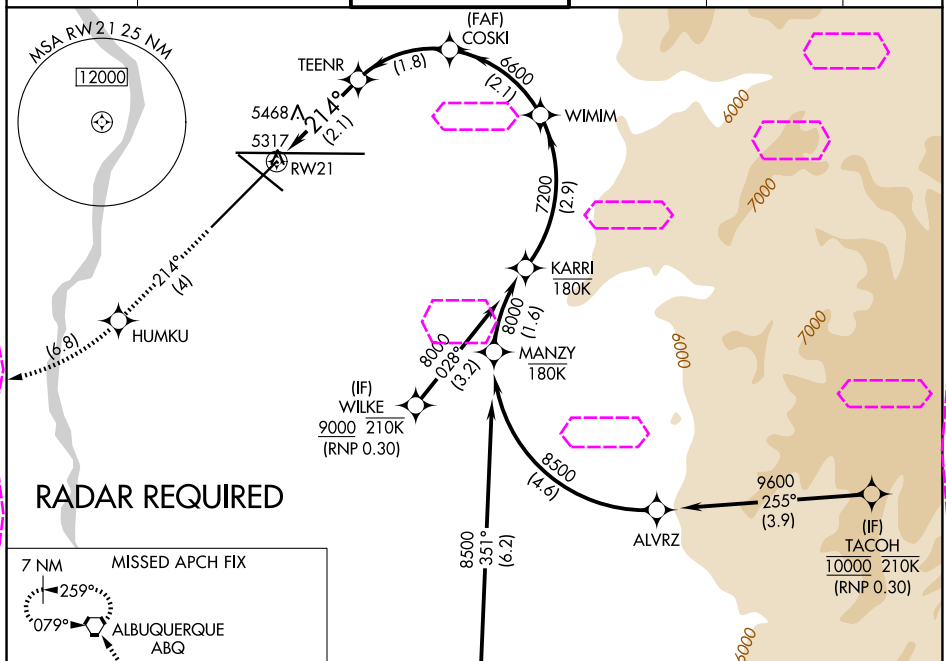
ALBUQUERQUE, NEW MEXICO
Amdt 1A 05FEB15

35°02'N-106°36'W

ALBUQUERQUE INTL SUNPORT (ABQ)
RNAV (RNP) Z RWY 21

RNAV (RNP) Z RWY 21
ALBUQUERQUE INTL SUNPORT (ABQ)

D-ATIS 118.0 257.7	ALBUQUERQUE APP CON 123.9 354.1	ALBUQUERQUE TOWER 120.3 351.9	GND CON 121.9 348.6	CLNC DEL 119.2 259.3	CPDLC
------------------------------	---	---	-------------------------------	--------------------------------	-------



ALBUQUERQUE INTL SUNPORT (ABQ)
RNAV (RNP) Z RWY 21

35°02'N-106°36'W