

ALBUQUERQUE, NEW MEXICO

AL-12 (FAA)

25163

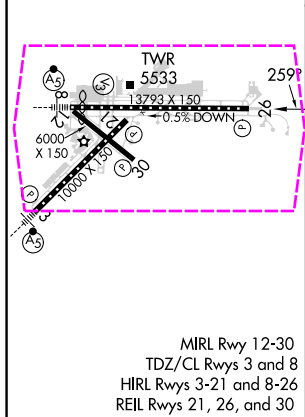
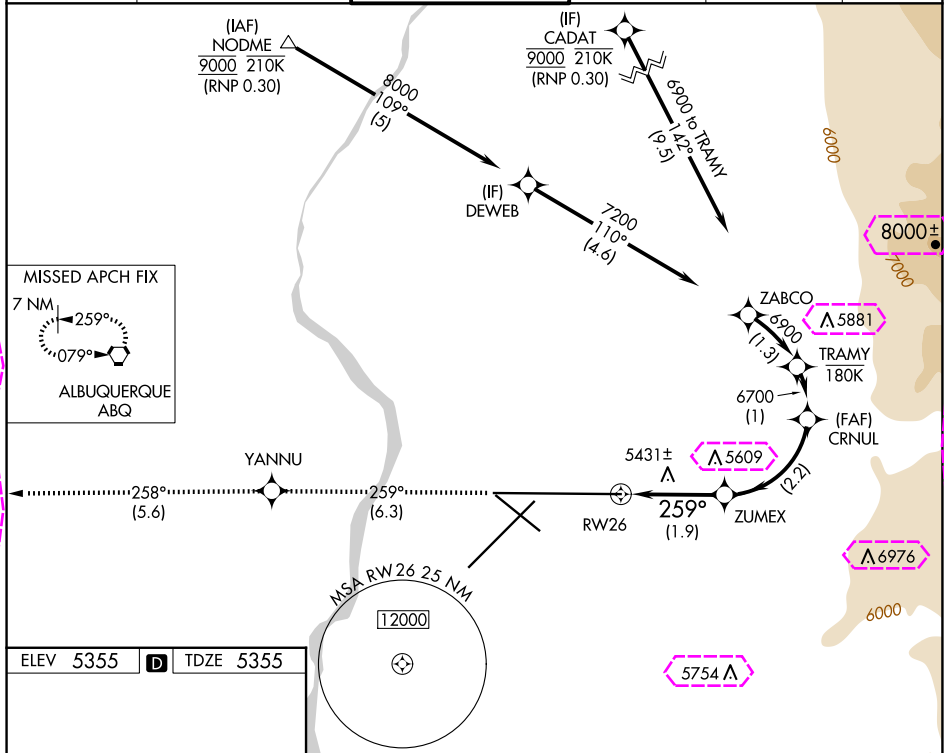
APP CRS	Rwy Ldg	13793
259°	TDZE	5355
	Apt Elev	5355

RNAV (RNP) Y RWY 26

ALBUQUERQUE INTL SUNPORT (ABQ)

RNP AR APCH, RF required.	MISSED APPROACH: Climb to 8000 on track 259° to YANNU and on track 258° to ABQ VORTAC and hold.
ASR For uncompensated Baro-VNAV systems, procedure NA below -12°C or above 48°C.	

D-ATIS	ALBUQUERQUE APP CON	ALBUQUERQUE TOWER	GND CON	CLNC DEL	CPDLC
118.0 257.7	123.9 354.1	120.3 351.9	121.9 348.6	119.2 259.3	



8000	YANNU	tr 259°	ABQ	tr 258°	VGSI and RNAV glidepath not coincident (VGSI Angle 3.00/TCH 83).
See planview for multiple IF locations.					CRNUL
ZUMEX					6700
RW26					5997
259°					GP 3.00°
1.9 NM					TCH 50
2.2 NM					
CATEGORY	A	B	C	D	
RNP 0.15 DA	5728-1¼ 373 (400-1¼)				

AUTHORIZATION REQUIRED

ALBUQUERQUE, NEW MEXICO
Amdt 1B 16AUG18

35°02'N-106°36'W

ALBUQUERQUE INTL SUNPORT (ABQ)
RNAV (RNP) Y RWY 26

SW-1, 10 JUL 2025 to 07 AUG 2025

SW-1, 10 JUL 2025 to 07 AUG 2025

ALBUQUERQUE, NEW MEXICO

AL-12 (FAA)

25219

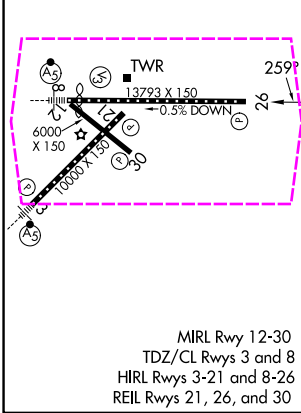
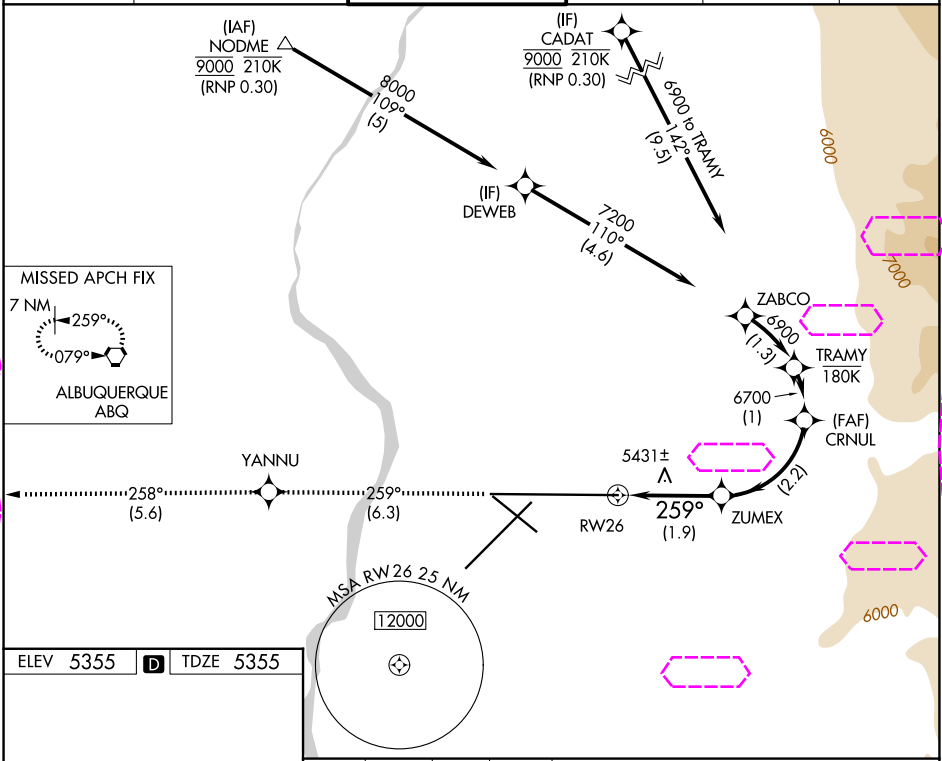
APP CRS	Rwy Ldg	13793
259°	TDZE	5355
	Apt Elev	5355

RNAV (RNP) Y RWY 26

ALBUQUERQUE INTL SUNPORT (ABQ)

RNP AR APCH, RF required.	MISSED APPROACH: Climb to 8000 on track 259° to YANNU and on track 258° to ABQ VORTAC and hold.
ASR For uncompensated Baro-VNAV systems, procedure NA below -12°C or above 48°C.	

D-ATIS	ALBUQUERQUE APP CON	ALBUQUERQUE TOWER	GND CON	CLNC DEL	CPDLC
118.0 257.7	123.9 354.1	120.3 351.9	121.9 348.6	119.2 259.3	



8000 ↑ tr 259°	YANNU ✦	tr 258°	ABQ ◡	VGSI and RNAV glidepath not coincident (VGSI Angle 3.00/TCH 83).		CRNUL
See planview for multiple IF locations.				ZUMEX	6700	
RW26				5997	259°	6700
1.9 NM				2.2 NM	GP 3.00° TCH 50	
CATEGORY	A		B		C	D
RNP 0.15 DA	5728-1¼ 373 (400-1¼)					

AUTHORIZATION REQUIRED