

ALBUQUERQUE, NEW MEXICO

AL-12 (FAA)

25163

APP CRS <b>214°</b>	Rwy Ldg TDZE <b>5316</b> Apt Elev <b>5355</b>
------------------------	---

# RNAV (RNP) Y RWY 21

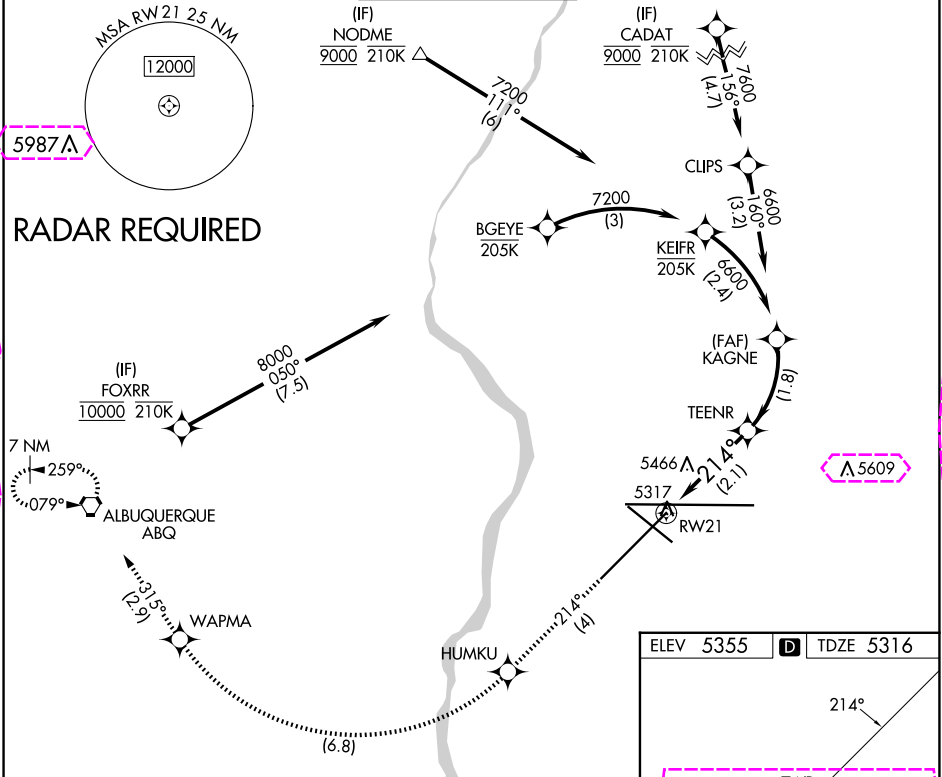
ALBUQUERQUE INTL SUNPORT (ABQ)

▼  
ASR

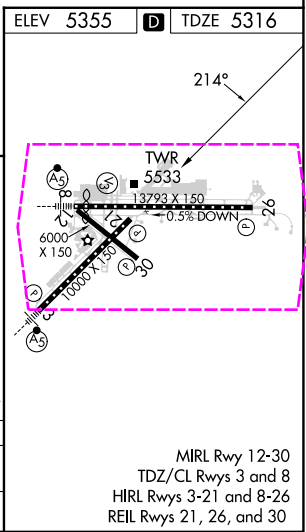
For uncompensated Baro-VNAV systems, procedure NA below -12°C (11°F) or above 47°C (116°F).  
RF Required. GPS Required.

MISSED APPROACH: Climb to 8000 on track 214° to HUMKU, right turn to WAPMA, then on track 315° to ABQ VORTAC and hold.

D-ATIS <b>118.0 257.7</b>	ALBUQUERQUE APP CON <b>123.9 354.1</b>	ALBUQUERQUE TOWER <b>120.3 351.9</b>	GND CON <b>121.9 348.6</b>	CLNC DEL <b>119.2 259.3</b>	CPDLC
------------------------------	---	---	-------------------------------	--------------------------------	-------



8000 tr 214°	HUMKU tr 214°	WAPMA tr 315°	ABQ tr 315°	KAGNE 6600
See planview for multiple IF locations.				
RW21 214° 2.1 NM 1.8 NM VGSi and RNAV glidepath not coincident (VGSi Angle 3.00/TCH 74). GP 3.00° TCH 55				
CATEGORY	A	B	C	D
RNP 0.30 DA	5758-1½ 442 (500-1½)			
AUTHORIZATION REQUIRED				



ALBUQUERQUE, NEW MEXICO  
Orig-B 17SEP15

35°02'N-106°36'W

ALBUQUERQUE INTL SUNPORT (ABQ)  
RNP (RNP) Y RWY 21

SW-1, 10 JUL 2025 to 07 AUG 2025

SW-1, 10 JUL 2025 to 07 AUG 2025

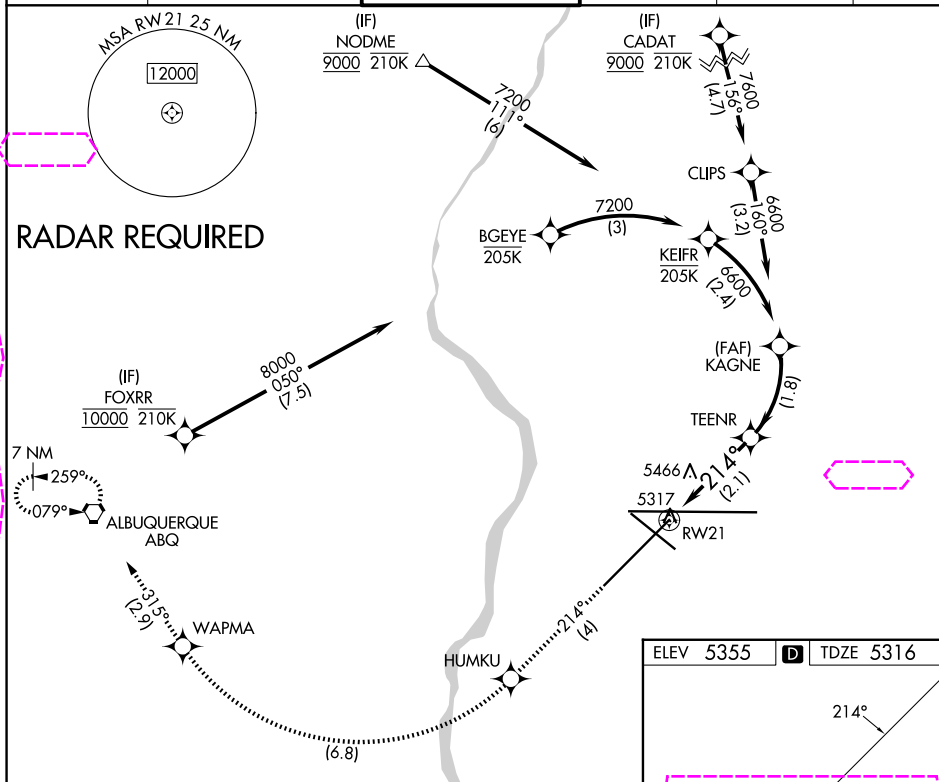
RNAV (RNP) Y Rwy 21  
ALBUQUERQUE INTL SUNPORT (ABQ)

APP CRS <b>214°</b>	Rwy Ldg <b>10000</b> TDZE <b>5316</b> Apt Elev <b>5355</b>
------------------------	--

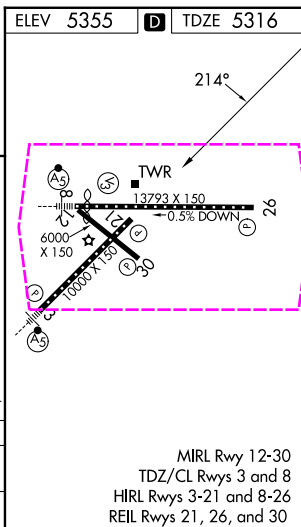
**T** For uncompensated Baro-VNAV systems, procedure  
ASR NA below -12°C (11°F) or above 47°C (116°F).  
RF Required. GPS Required.

**MISSED APPROACH:** Climb to 8000 on track 214° to HUMKU, right turn to WAPMA, then on track 315° to ABQ VORTAC and hold.

D-ATIS 118.0 257.7	ALBUQUERQUE APP CON 123.9 354.1	ALBUQUERQUE TOWER 120.3 351.9	GND CON 121.9 348.6	CLNC DEL 119.2 259.3	CPDLC
-----------------------	------------------------------------	----------------------------------	------------------------	-------------------------	-------



8000 ↑ tr 214°	HUMKU ✱	WAPMA ✱	tr 315° ✱	ABQ ✱	KAGNE 6600
See planview for multiple IF locations.					
CATEGORY	A	B	C	D	
RNP 0.30 DA	5758-1½ 442 (500-1½)				
AUTHORIZATION REQUIRED					



ALBUQUERQUE, NEW MEXICO  
Orig-B 17SEP15

35°02'N-106°36'W

ALBUQUERQUE INTL SUNPORT (ABQ)  
RNAV (RNP) Y RWY 21