

ALBUQUERQUE, NEW MEXICO

AL-12 (FAA)

25163

LOC/DME	I-SPT	APP CRS	Rwy Ldg	12793
111.9		079°	TDZE	5320
Chan 56			Apt Elev	5355

ILS or LOC RWY 8

ALBUQUERQUE INTL SUNPORT (ABQ)

DME required. RNAV 1 - GPS or RADAR required for procedure entry.

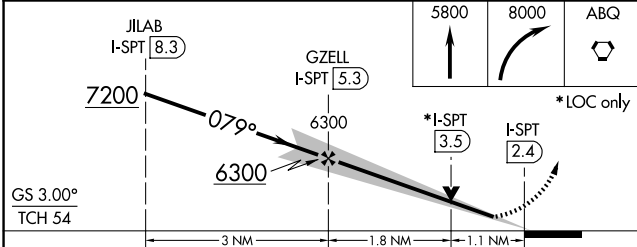
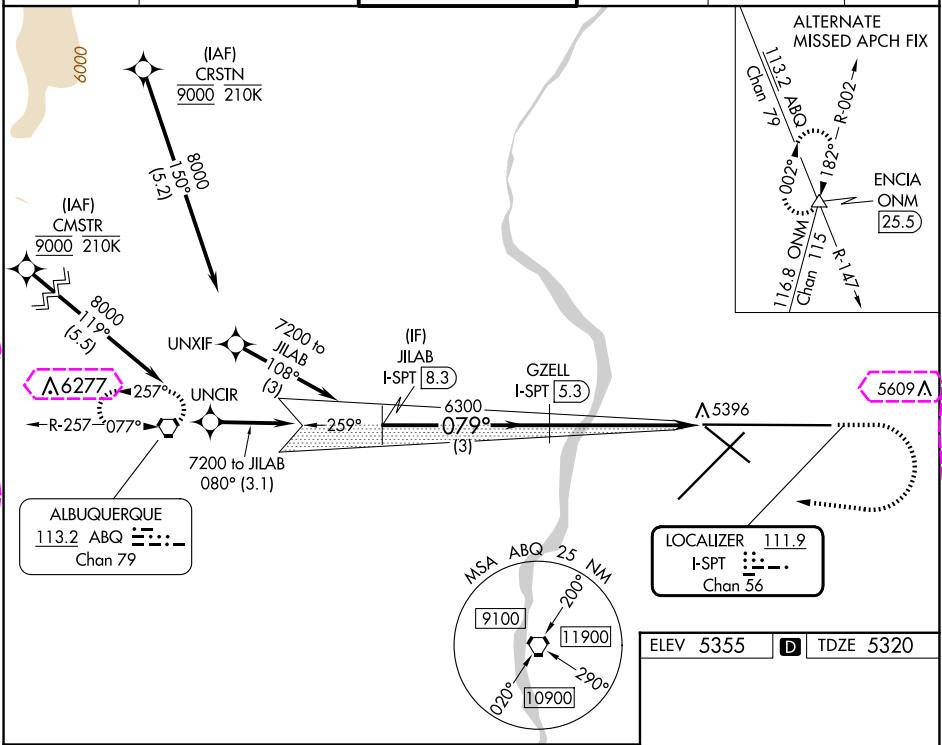
For inop ALS, increase S-LOC 8 Cat C and D visibility to RVR 6000.

ASR

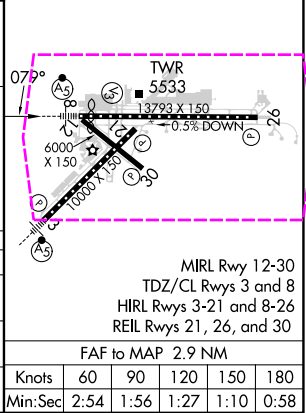
MALSR

MISSED APPROACH: Climb to 5800 then climbing right turn to 8000 direct ABQ VORTAC and hold.

D-ATIS	ALBUQUERQUE APP CON	ALBUQUERQUE TOWER	GND CON	CLNC DEL	CPDLC
118.0 257.7	123.9 354.1	120.3 351.9	121.9 348.6	119.2 259.3	



CATEGORY	A	B	C	D
S-ILS 8	5527/18	207 (200-½)		
S-LOC 8	5720/24	400 (400-½)	5720/40	400 (400-¾)
CIRCLING	5840-1 485 (500-1)	5920-1 565 (600-1)	5940-1½ 585 (600-1½)	NA



ALBUQUERQUE, NEW MEXICO
Amdt 6B 05NOV20

35°02'N-106°36'W

ILS or LOC RWY 8

SW-1, 10 JUL 2025 to 07 AUG 2025

SW-1, 10 JUL 2025 to 07 AUG 2025

ALBUQUERQUE, NEW MEXICO

AL-12 (FAA)

25219

LOC/DME	I-SPT	APP CRS	Rwy Ldg	12793
111.9		079°	TDZE	5320
Chan 56			Apt Elev	5355

ILS or LOC RWY 8

ALBUQUERQUE INTL SUNPORT (ABQ)

DME required. RNAV 1 - GPS or RADAR required for procedure entry.

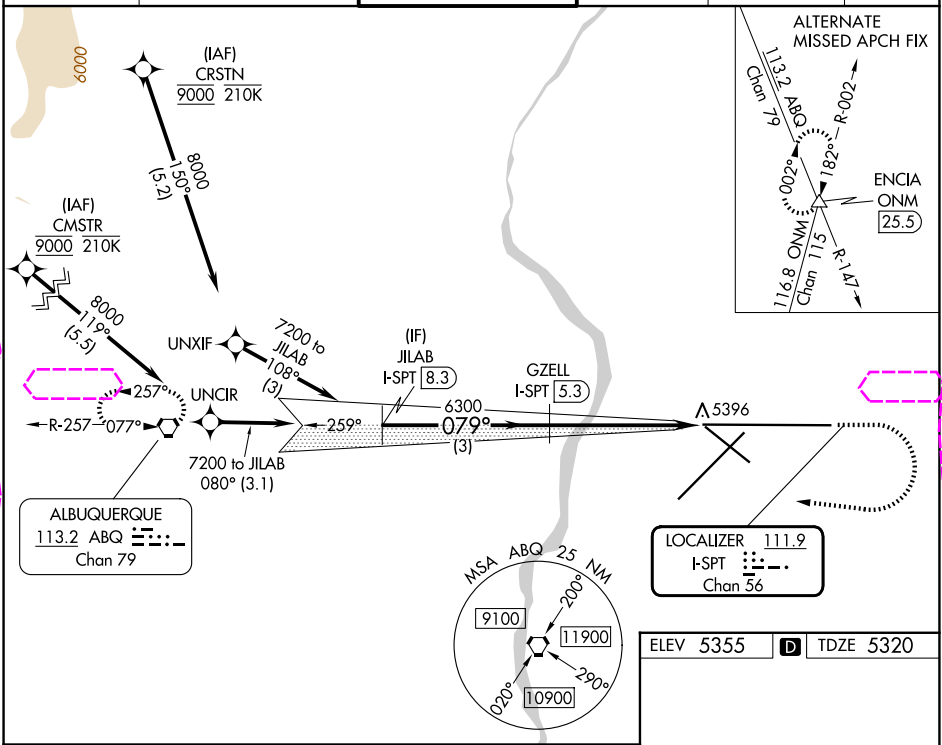
For inop ALS, increase S-LOC 8 Cat C and D visibility to RVR 6000.

ASR

MALSR

MISSED APPROACH: Climb to 5800 then climbing right turn to 8000 direct ABQ VORTAC and hold.

D-ATIS	ALBUQUERQUE APP CON	ALBUQUERQUE TOWER	GND CON	CLNC DEL	CPDLC
118.0 257.7	123.9 354.1	120.3 351.9	121.9 348.6	119.2 259.3	



CATEGORY	GS 3.00° TCH 54			
	A	B	C	D
	S-ILS 8 5527/18 207 (200-½)			
	S-LOC 8 5720/24 400 (400-½) 5720/40 400 (400-¾)			
CIRCLING	5840-1 485 (500-1)	5920-1 565 (600-1)	5940-1½ 585 (600-1½)	NA

ELEV 5355	TDZE 5320
MIRL Rwy 12-30 TDZ/CL Rwys 3 and 8 HIRL Rwys 3-21 and 8-26 REIL Rwys 21, 26, and 30	
FAF to MAP 2.9 NM	
Knots	60 90 120 150 180
Min:Sec	2:54 1:56 1:27 1:10 0:58

ALBUQUERQUE, NEW MEXICO
Amdt 6B 05NOV20

35°02'N-106°36'W

ALBUQUERQUE INTL SUNPORT (ABQ)
ILS or LOC RWY 8

SW-1, 07 AUG 2025 to 04 SEP 2025

SW-1, 07 AUG 2025 to 04 SEP 2025