

VOR RWY 28
ALBANY INTL (ALB)

DME or RADAR required.

T Circling NA West of Rwy 1-19. Straight-in Rwy 28 NA at night, Circling Rwy
A 10, 28 NA at night. Rwy 28 helicopter visibility reduction below 1 SM NA.

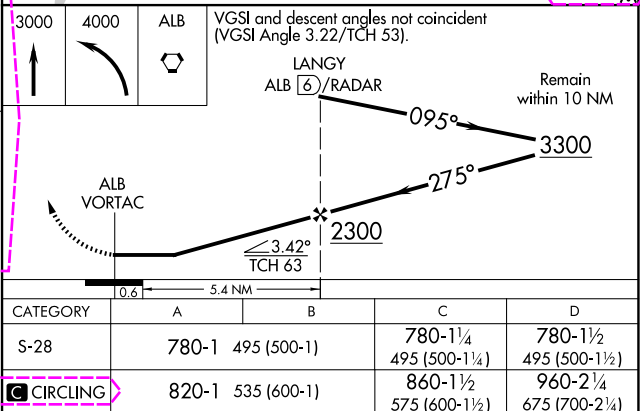
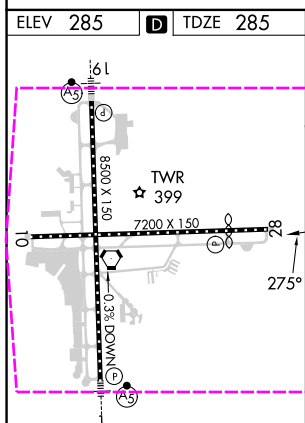
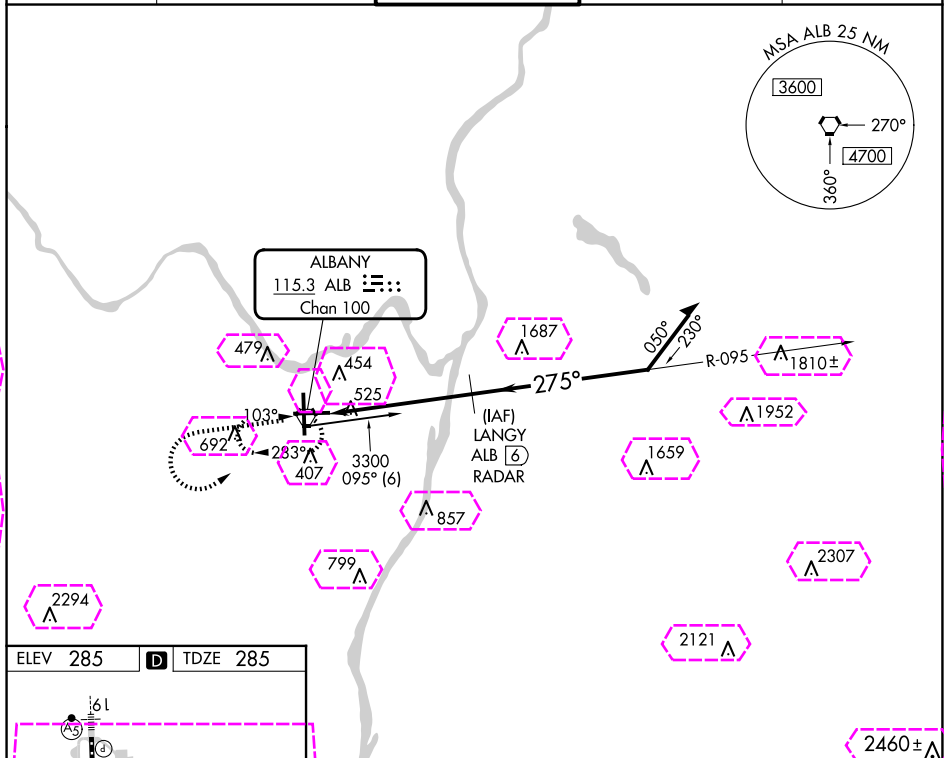
MISSED APPROACH: Climb to 3000, then climbing left turn to 4000 direct ALB VORTAC and hold.

D-ATIS
120.45

ALBANY APP CON
132.825 307.2

ALBANY TOWER
119.5 257.8

GND CON
121.7 348.6

CLNC DEL
127.50

ALBANY, NEW YORK
Orig-F 06OCT22

42°45'N-73°48'W

ALBANY INTL (ALB)
VOR RWY 28

NE-2, 10 JUL 2025 to 07 AUG, 2025

NE-2, 10 JUL 2025 to 07 AUG 2025

ALBANY, NEW YORK

AL-10 (FAA)

25219

VORTAC ALB	APP CRS	Rwy Ldg	6007
115.3	275°	TDZE	285
Chan 100		Api Elev	285

VOR RWY 28

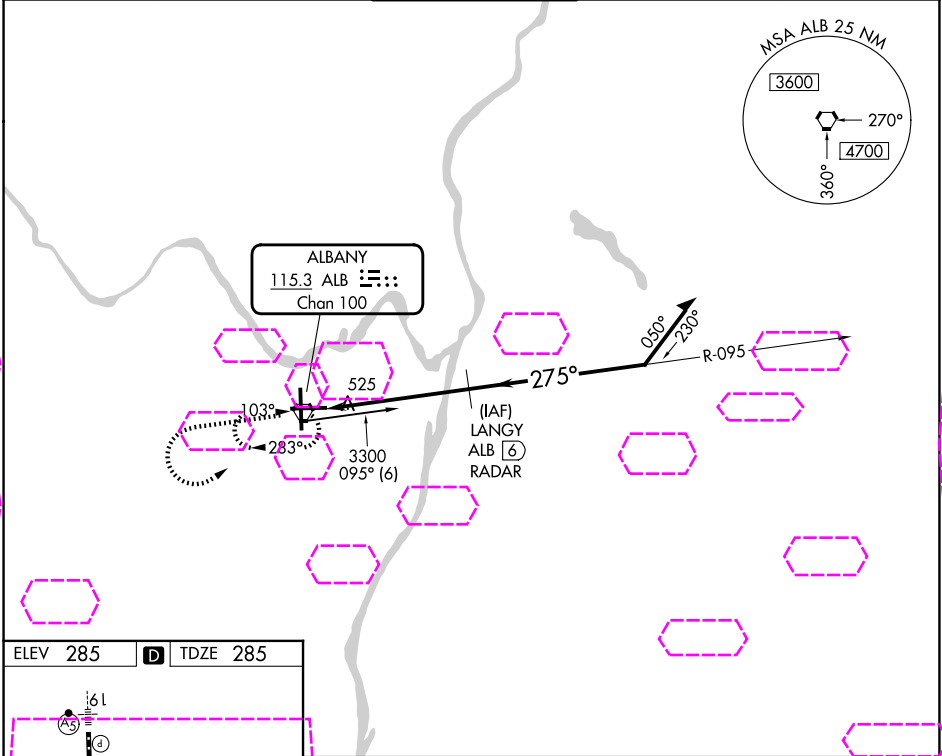
ALBANY INTL (ALB)

DME or RADAR required.

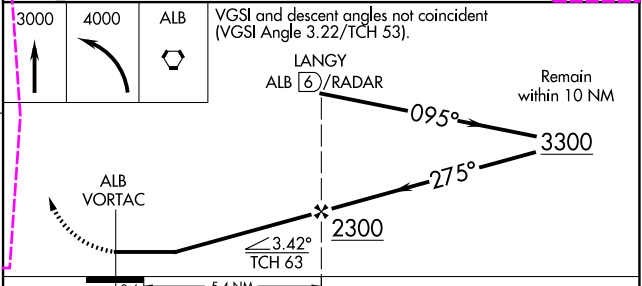
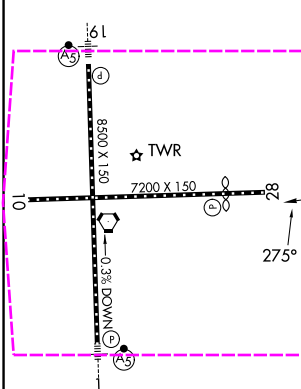
⚠ Circling NA West of Rwy 1-19. Straight-in Rwy 28 NA at night, Circling Rwy 10, 28 NA at night. Rwy 28 helicopter visibility reduction below 1 SM NA.

MISSED APPROACH: Climb to 3000, then climbing left turn to 4000 direct ALB VORTAC and hold.

D-ATIS	ALBANY APP CON	ALBANY TOWER	GND CON	CLNC DEL
120.45	132.825 307.2	119.5 257.8	121.7 348.6	127.50



ELEV 285	D	TDZE 285
----------	---	----------



CATEGORY	A	B	C	D
S-28	780-1	495 (500-1)	780-1¼ 495 (500-1¼)	780-1½ 495 (500-1½)
CIRCLING	820-1	535 (600-1)	860-1½ 575 (600-1½)	960-2¼ 675 (700-2¼)

ALBANY, NEW YORK
Orig-F 06OCT22

42°45'N-73°48'W

ALBANY INTL (ALB)
VOR RWY 28

NE-2, 07 AUG 2025 to 04 SEP 2025

NE-2, 07 AUG 2025 to 04 SEP 2025