

ALBANY, NEW YORK



AL-10 (FAA)

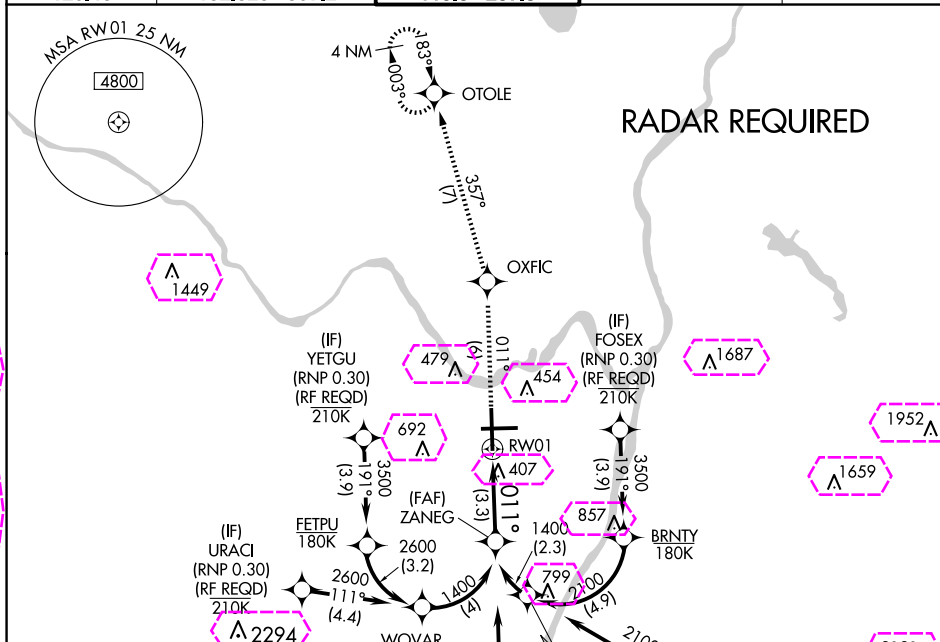
25107

|                        |   |
|------------------------|---|
| APP CRS<br><b>011°</b> | Rwy Idg <b>8500</b><br>TDZE <b>284</b><br>Apt Elev <b>285</b> |
|------------------------|---|

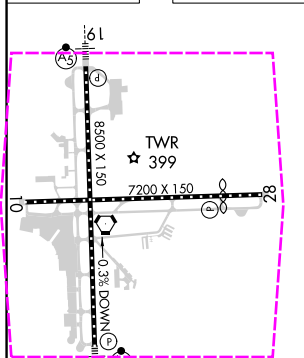
RNAV (RNP) Z RWY 1

ALBANY INTL (ALB)

|   |   |                                 |                             |  |  |
|---|---|---------------------------------|-----------------------------|--|--|
|  | GPS required. For uncompensated Baro-VNAV systems, procedure NA below -15°C (3°F) or above 47°C (117°F). For inoperative MALSR, increase RNP 0.15 visibility to 1¼ and RNP 0.30 visibility to 1½. |                                 |                             | MALSR<br> | MISSED APPROACH: Climb to 3000 on track 011° to OXFIC and on track 357° to OTOLE and hold. |
|   | D-ATIS<br>120.45  | ALBANY APP CON<br>132.825 307.2 | ALBANY TOWER<br>119.5 257.8 | GND CON<br>121.7 348.6   | CLNC DEL<br>127.50   |



|          |          |          |
|----------|----------|----------|
| ELEV 285 | <b>D</b> | TDZE 284 |
|----------|----------|----------|



011° → HIRL Rwy 1-19 and 10-28  
REIL Rwy 10 and 28

|   |            |            |            |            |               |      |                    |  |
|---|------------|------------|------------|------------|---------------|------|--------------------|--|
| 3000<br>↑                               | fr<br>011° | OXFIC<br>↑ | fr<br>357° | OTOLE<br>↑ | ZANEG<br>1400 |      |                    |  |
| See planview for multiple IF locations. |            |            |            |            | RW01<br>      | 1400 | GP 3.00°<br>TCH 56 |  |
| CATEGORY                                | A          |            | B          |            | C             | D    |                    |  |
| RNP 0.15 DA                             |            |            | 656/40     |            | 372 (400-¾)   |      |                    |  |
| RNP 0.30 DA                             |            |            | 727/50     |            | 443 (500-1)   |      |                    |  |

**AUTHORIZATION REQUIRED**

ALBANY, NEW YORK

AL-10 (FAA)

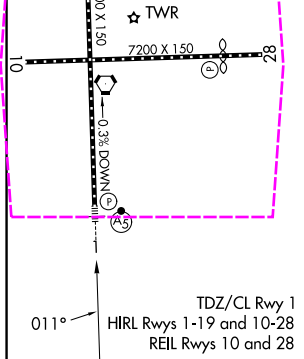
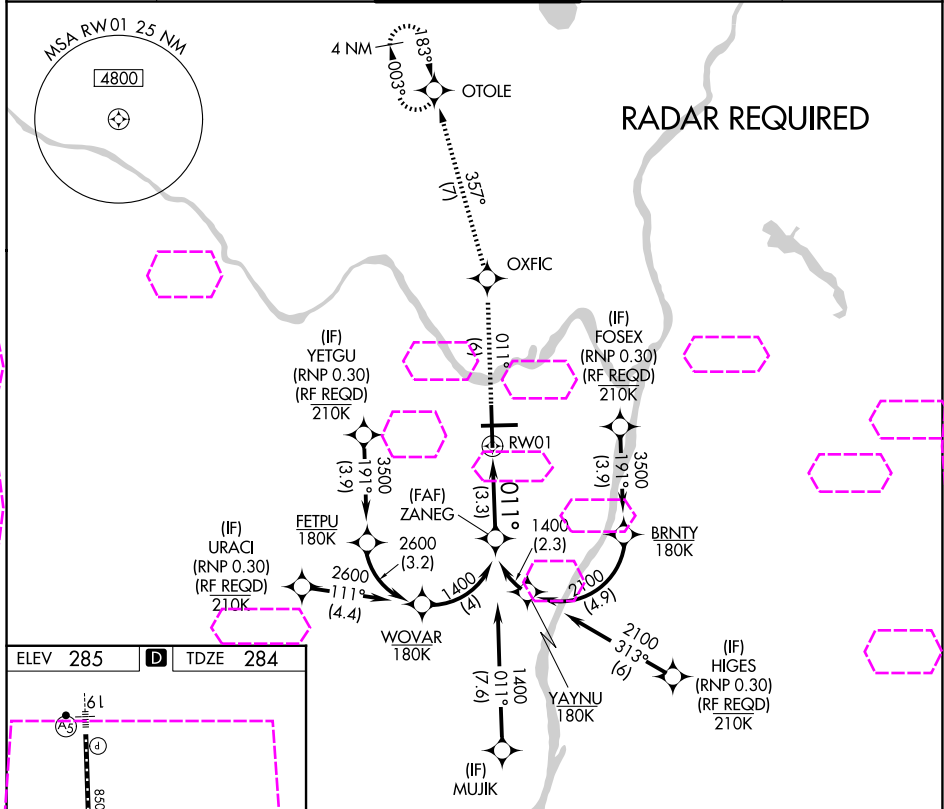
25219

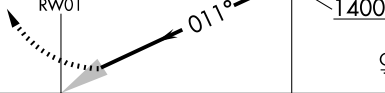
|                        |                        |
|------------------------|------------------------|
| APP CRS<br><b>011°</b> | Rwy Ldg<br><b>8500</b> |
|                        | TDZE<br><b>284</b>     |
|                        | Apt Elev<br><b>285</b> |

# RNAV (RNP) Z RWY 1

ALBANY INTL (ALB)

|   |  |                                    |                               |  |
|---|--|------------------------------------|-------------------------------|--|
| GPS required. For uncompensated Baro-VNAV systems, procedure NA below -15°C (3°F) or above 47°C (117°F). For inoperative MALSR, increase RNP 0.15 visibility to 1½ and RNP 0.30 visibility to 1½. |  |                                    | MALSR<br>                     | MISSED APPROACH: Climb to 3000 on track 011° to OXFIC and on track 357° to OTOLE and hold. |
| D-ATIS<br><b>120.45</b>   | ALBANY APP CON<br><b>132.825 307.2</b> | ALBANY TOWER<br><b>119.5 257.8</b> | GND CON<br><b>121.7 348.6</b> | CLNC DEL<br><b>127.50</b>  |



|   |            |            |             |            |                    |
|---|------------|------------|-------------|------------|--------------------|
| 3000<br>↑   | tr<br>011° | OXFIC<br>✦ | tr<br>357°  | OTOLE<br>✦ | ZANEG<br>1400      |
| See planview for multiple IF locations.   |            |            |             |            | GP 3.00°<br>TCH 56 |
|  |            |            |             |            |                    |
| CATEGORY  | A          | B          | C           | D          |                    |
| RNP 0.15 DA   | 656/40     |            | 372 (400-¾) |            |                    |
| RNP 0.30 DA   | 727/50     |            | 443 (500-1) |            |                    |
| AUTHORIZATION REQUIRED  |            |            |             |            |                    |

ALBANY, NEW YORK  
Orig-A 24JUL14

42°45'N-73°48'W

ALBANY INTL (ALB)  
RNAV (RNP) Z RWY 1

NE-2, 07 AUG 2025 to 04 SEP 2025

NE-2, 07 AUG 2025 to 04 SEP 2025