

LOC/DME I-DEJ <b>109.5</b> Chan <b>32</b>	APP CRS <b>011°</b>	Rwy Idg <b>8500</b> TDZE <b>284</b> Apt Elev <b>285</b>
---	------------------------	---

ILS or LOC RWY 1  
ALBANY INTL (ALB)

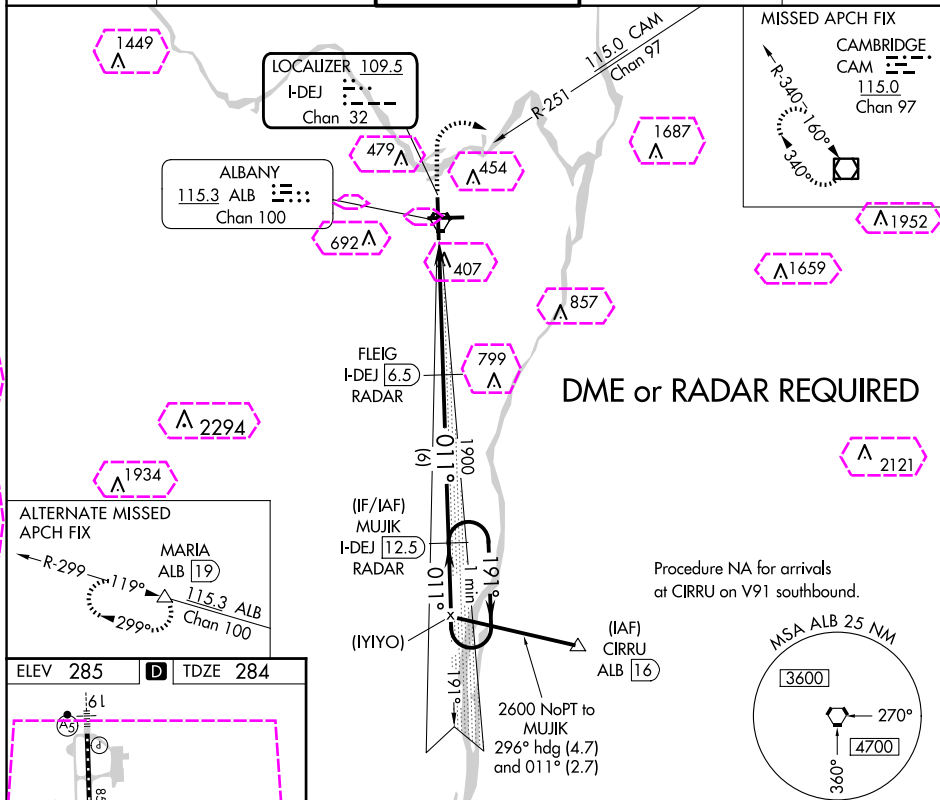
ALBANY INTL (ALB)

**T** Circling NA west of Rwy 1-19. DME or RADAR required.  
**A** Circling Rwy 10 NA at night.

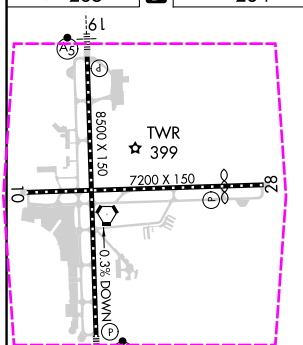


**MISSED APPROACH:** Climb to 800 then climbing right turn to 5000 and on CAM VOR/DME R-251 to CAM VOR/DME and hold.

D-ATIS	ALBANY APP CON	ALBANY TOWER	GND CON	CLNC DEL
120.45	132.825 307.2	119.5 257.8	121.7 348.6	127.50



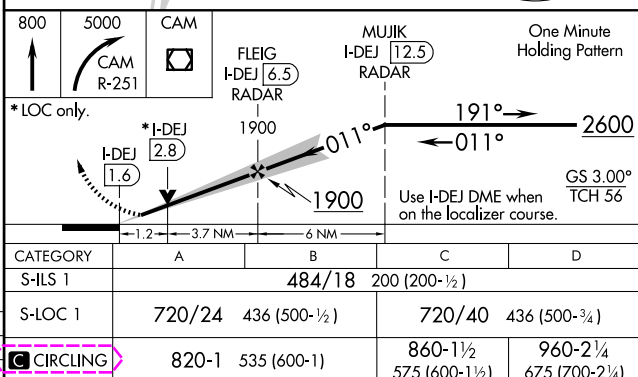
ELEV 285	<b>D</b>	TDZE 284
----------	----------	----------



TDZ/CL Rwy 1  
19 and 10-28

FAF to MAP 4.9 NM

Knots	60	90	120	150	180
Min:Sec	4:54	3:16	2:27	1:58	1:38

ALBANY, NEW YORK  
Amdt 11D 06OCT22

42°45'N-73°48'W

ALBANY INTL (ALB)

## ILS or LOC RWY 1

NE-2, 10 JUL 2025 to 07 AUG 2025

NE-2, 10 JUL 2025 to 07 AUG 2025

ALBANY, NEW YORK

AL-10 (FAA)

25219

LOC/DME I-DEJ <b>109.5</b> Chan 32	APP CRS <b>011°</b>	Rwy Ldg TDZE <b>284</b> Apt Elev <b>285</b>
--	------------------------	---

# ILS or LOC RWY 1

ALBANY INTL (ALB)

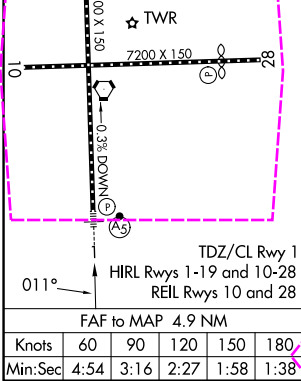
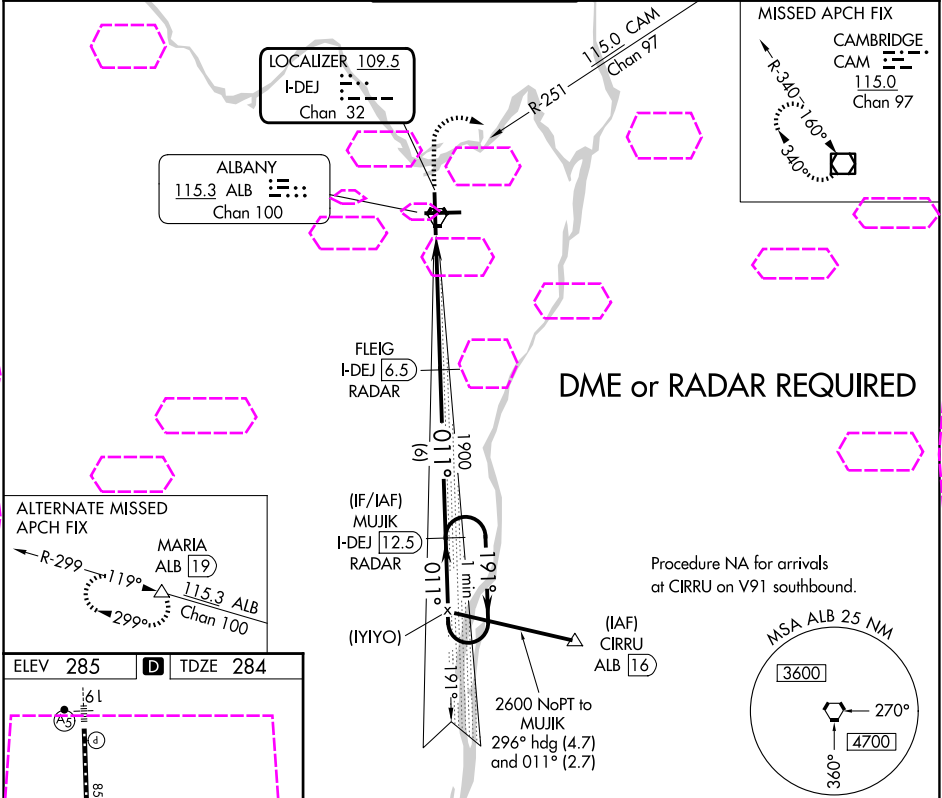
**⚠** Circling NA west of Rwy 1-19. DME or RADAR required.

**⚠** Circling Rwy 10 NA at night.

MALSR

MISSED APPROACH: Climb to 800 then climbing right turn to 5000 and on CAM VOR/DME R-251 to CAM VOR/DME and hold.

D-ATIS <b>120.45</b>	ALBANY APP CON <b>132.825 307.2</b>	ALBANY TOWER <b>119.5 257.8</b>	GND CON <b>121.7 348.6</b>	CLNC DEL <b>127.50</b>
-------------------------	--	------------------------------------	-------------------------------	---------------------------



800	5000	CAM	MUJIK I-DEJ [12.5] RADAR	One Minute Holding Pattern
↑	CAM R-251	⬡	FLEIG I-DEJ [6.5] RADAR	
*LOC only.				
Use I-DEJ DME when on the localizer course.				
CATEGORY	A	B	C	D
S-ILS 1	484/18 200 (200-½)			
S-LOC 1	720/24	436 (500-½)	720/40	436 (500-¾)
CIRCLING	820-1	535 (600-1)	860-1½ 575 (600-1½)	960-2¼ 675 (700-2¼)

ALBANY, NEW YORK  
Amdt 11D 06OCT22

42°45'N-73°48'W

# ILS or LOC RWY 1

ALBANY INTL (ALB)

NE-2, 07 AUG 2025 to 04 SEP 2025

NE-2, 07 AUG 2025 to 04 SEP 2025