

ALBANY, GEORGIA

AL-8 (FAA)

25163

VOR/DME PZD	APP CRS	Rwy Ldg	5200
116.1	147°	TDZE	196
Chan 108		Apt Elev	196

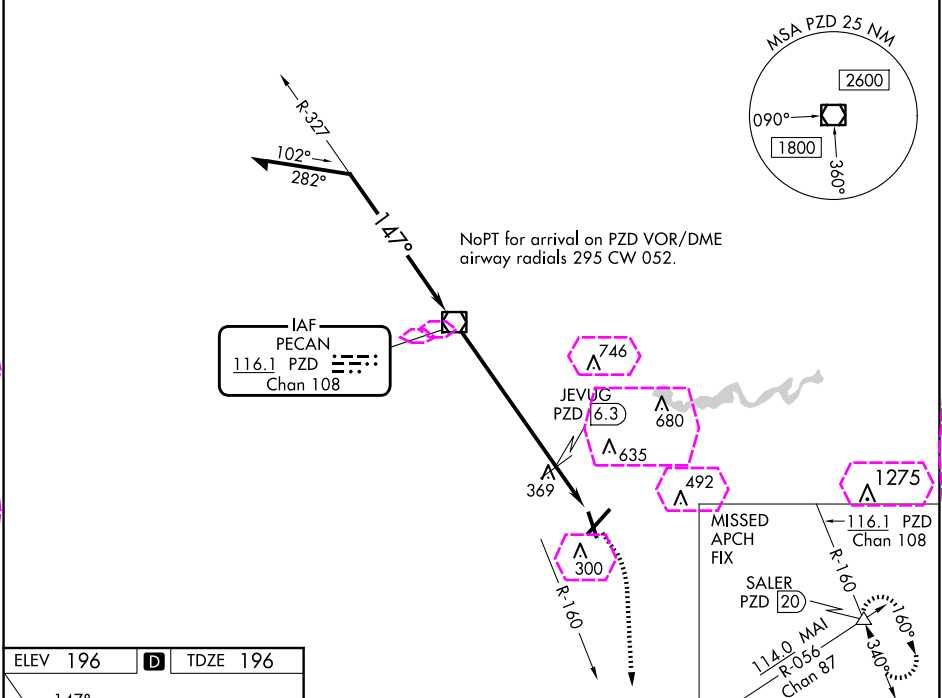
# VOR RWY 17

SOUTHWEST GEORGIA RGNL (ABY)

**⚠** Rwy 17 helicopter visibility reduction below 3/4 SM NA.

MISSED APPROACH: Climb to 1000 then climbing right turn to 3000 on heading 170° and PZD VOR/DME R-160 to SALER INT/20 DME and hold.

ATIS 133.05	JACKSONVILLE CENTER 125.75 363.075	ALBANY TOWER ★ 120.25(CTAF) 0336.4	GND CON 121.9 348.6	UNICOM 122.95
----------------	---------------------------------------	---------------------------------------	------------------------	------------------



ELEV 196 TDZE 196

147°

HIRL Rwy 5-23

MIRL Rwy 17-35

REIL Rwy 35

REIL Rws 17 and 23

FAF to MAP 8.3 NM

Knots	60	90	120	150	180
Min:Sec	8:18	5:32	4:09	3:19	2:46

VGSI and descent angles not coincident (VGSI Angle 3.00/TCH 49).				<div>1000 ↑</div>		<div>3000 hdg 170°</div>		<div>PZD R-160</div>		<div>SALER △</div>	
<div>Remain within 10 NM</div> <div>2000</div> <div>327°</div> <div>147°</div> <div>2000</div> <div>147°</div> <div>840</div> <div>6.3 NM</div> <div>2 NM</div>											
CATEGORY		A		B		C		D			
S-17		840-1 644 (700-1)				840-1 $\frac{7}{8}$ 644 (700-1 $\frac{7}{8}$ )					
<div>CIRCLING</div>		840-1 644 (700-1)				940-2 $\frac{1}{4}$ 744 (800-2 $\frac{1}{4}$ )		940-2 $\frac{1}{2}$ 744 (800-2 $\frac{1}{2}$ )			
JEVUG FIX MINIMUMS											
S-17		640-1 444 (500-1)				640-1 $\frac{3}{8}$ 444 (500-1 $\frac{3}{8}$ )					
<div>CIRCLING</div>		660-1 464 (500-1)				940-2 $\frac{1}{4}$ 744 (800-2 $\frac{1}{4}$ )		940-2 $\frac{1}{2}$ 744 (800-2 $\frac{1}{2}$ )			

ALBANY, GEORGIA  
Amdt 27D 12JUN25

31°32'N-84°12'W

SOUTHWEST GEORGIA RGNL (ABY)  
VOR RWY 17

ALBANY, GEORGIA

AL-8 (FAA)

25219

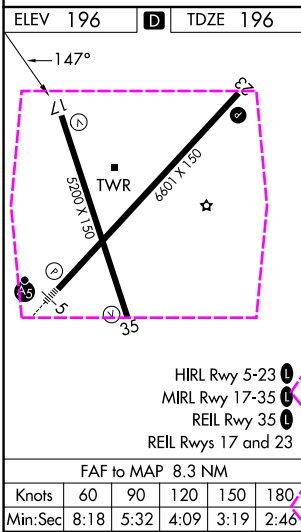
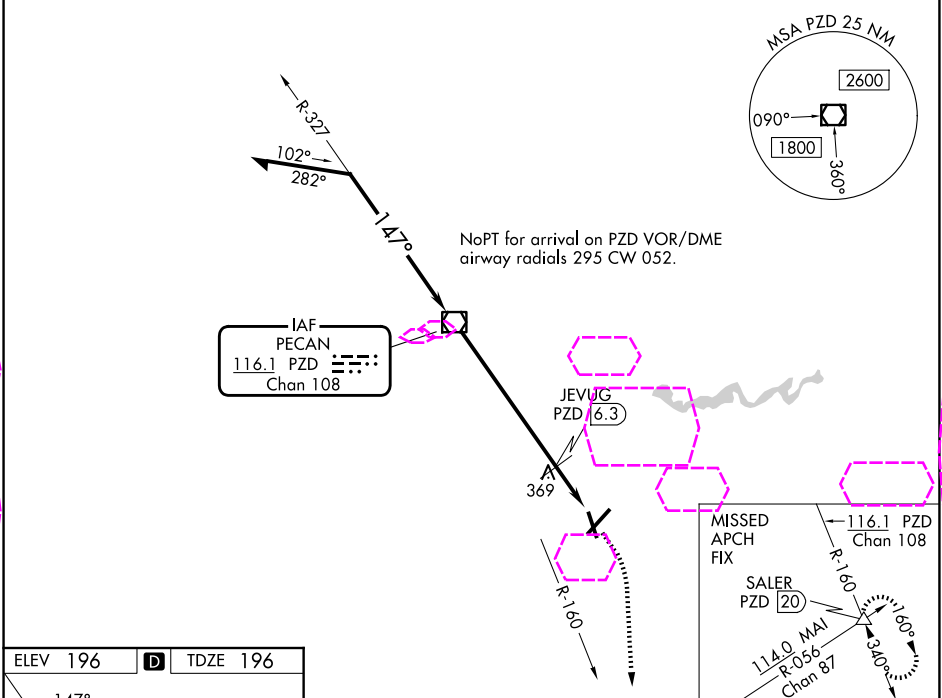
VOR/DME PZD	APP CRS	Rwy Ldg	5200
<b>116.1</b>	<b>147°</b>	TDZE	<b>196</b>
Chan <b>108</b>		Apt Elev	<b>196</b>

VOR RWY 17  
SOUTHWEST GEORGIA RGNL (ABY)

**⚠** Rwy 17 helicopter visibility reduction below 3/4 SM NA.

MISSED APPROACH: Climb to 1000 then climbing right turn to 3000 on heading 170° and PZD VOR/DME R-160 to SALER INT/20 DME and hold.

ATIS <b>133.05</b>	JACKSONVILLE CENTER <b>125.75 363.075</b>	ALBANY TOWER ★ <b>120.25 (CTAF) 0336.4</b>	GND CON <b>121.9 348.6</b>	UNICOM <b>122.95</b>
-----------------------	--	---	-------------------------------	-------------------------



VGSI and descent angles not coincident (VGSI Angle 3.00/TCH 49).				<div>1000 ↑</div>		<div>3000 hdg 170°</div>		<div>PZD R-160</div>		<div>SALER △</div>	
<div>Remain within 10 NM</div> <div>2000</div> <div>327°</div> <div>147°</div> <div>2000</div> <div>147°</div> <div>840</div> <div>6.3 NM</div> <div>2 NM</div>				PZD VOR/DME		JEVUG PZD (6.3)		PZD (8.3)			
CATEGORY		A		B		C		D			
S-17		840-1		644 (700-1)		840-1 $\frac{7}{8}$		644 (700-1 $\frac{7}{8}$ )			
CIRCLING		840-1		644 (700-1)		940-2 $\frac{1}{4}$ 744 (800-2 $\frac{1}{4}$ )		940-2 $\frac{1}{2}$ 744 (800-2 $\frac{1}{2}$ )			
JEVUG FIX MINIMUMS											
S-17		640-1		444 (500-1)		640-1 $\frac{3}{8}$		444 (500-1 $\frac{3}{8}$ )			
CIRCLING		660-1		464 (500-1)		940-2 $\frac{1}{4}$ 744 (800-2 $\frac{1}{4}$ )		940-2 $\frac{1}{2}$ 744 (800-2 $\frac{1}{2}$ )			

ALBANY, GEORGIA  
Amdt 27D 12JUN25

31°32'N-84°12'W

SOUTHWEST GEORGIA RGNL (ABY)  
VOR RWY 17

SE-4, 07 AUG 2025 to 04 SEP 2025

SE-4, 07 AUG 2025 to 04 SEP 2025