

ALBANY, GEORGIA

AL-8 (FAA)

25107

WAAS CH 78000 W05A	APP CRS 047°	Rwy Idg 6601 TDZE 196 Apt Elev 196
--	------------------------	---

RNAV (GPS) RWY 5

SOUTHWEST GEORGIA RGNL (ABY)

RNP APCH.

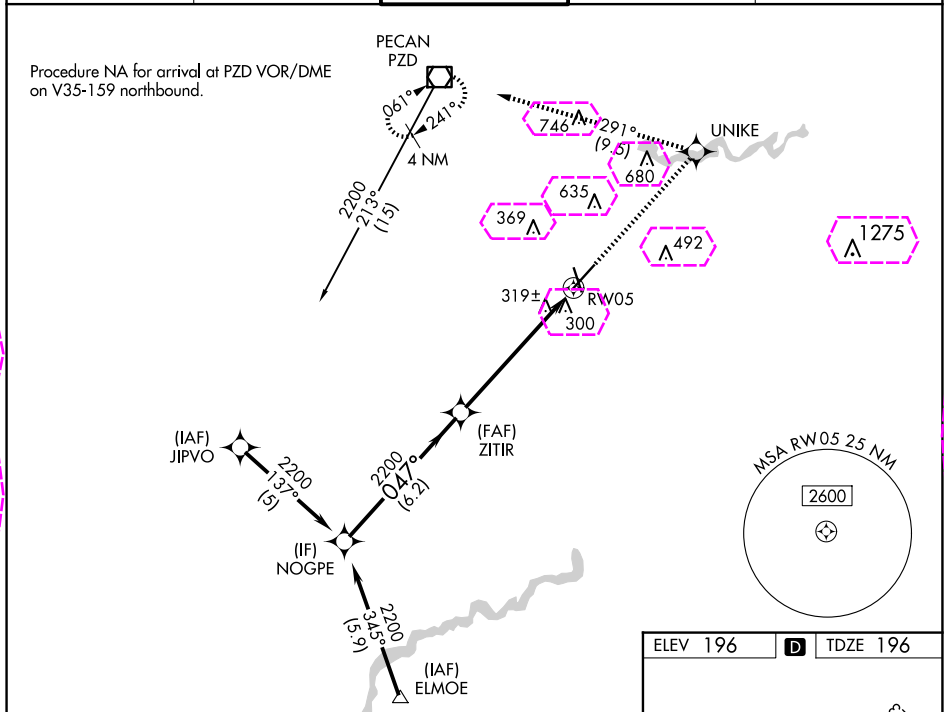
▼ For uncompensated Baro-VNAV systems, LNAV/VNAV NA below -7°C or above 54°C. For inop ALS, increase LNAV Cat D visibility to RVR 6000.
▲ ** RVR 1800 authorized with use of FD or AP or HUD to DA.

MALSR



MISSED APPROACH: Climb to 2000
direct UNIKE and left turn on track
291° to PZD VOR/DME and hold.

ATIS 133.05	JACKSONVILLE CENTER 125.75 363.075	ALBANY TOWER ★ 120.25 (CTAF) 0336.4	GND CON 121.9 348.6	UNICOM 122.95
-----------------------	--	---	-------------------------------	-------------------------



VGSI and RNAV glidepath not coincident (VGSI Angle 3.00/TCH 55).				2000	UNIKE	tr 291°	PZD
NOGPE				2200	ZITIR	2200	
GP 3.00°				2200			
TCH 60							
				6.2 NM	5 NM	1 NM	
CATEGORY	A	B	C	D			
LPV DA**	396/24			200 (200-½)			
LNAV/VNAV DA	635/50			439 (500-1)			
LNAV MDA	580/24			384 (400-½)			
CIRCLING	640-1	660-1	940-2¼	940-2½			
	444 (500-1)	464 (500-1)	744 (800-2¼)	744 (800-2½)			

ALBANY, GEORGIA
Amdt 1D 26MAR20

31°32'N-84°12'W

SOUTHWEST GEORGIA RGNL (ABY)
RNAV (GPS) RWY 5

ALBANY, GEORGIA

AL-8 (FAA)

25219

WAAS CH 78000 W05A	APP CRS 047°	Rwy Ldg 6601 TDZE 196 Apt Elev 196
--	------------------------	---

RNAV (GPS) RWY 5

SOUTHWEST GEORGIA RGNL (ABY)

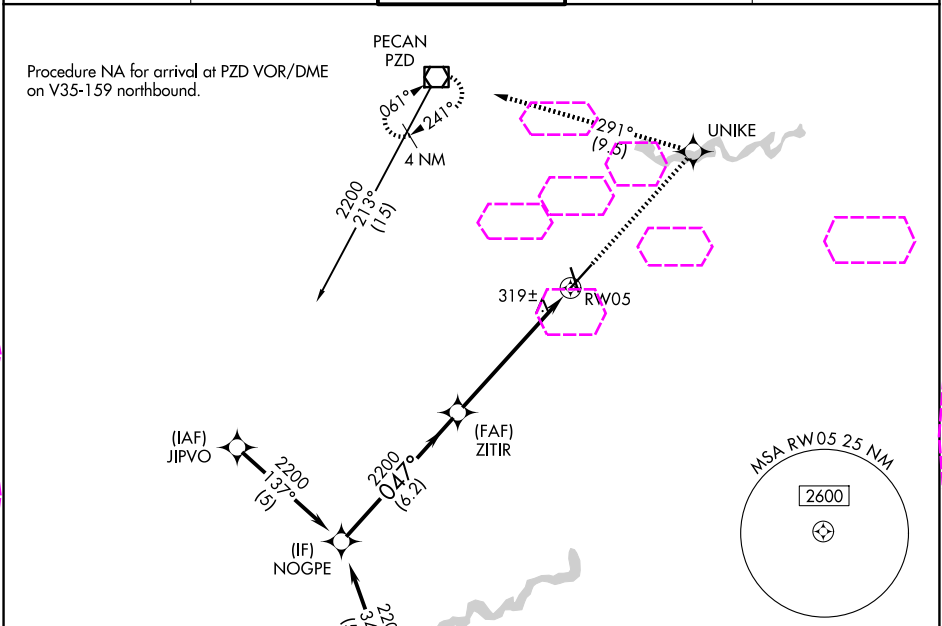
RNP APCH.

▼ For uncompensated Baro-VNAV systems, LNAV/VNAV NA below -7°C or above 54°C. For inop ALS, increase LNAV Cat D visibility to RVR 6000.
▲ ** RVR 1800 authorized with use of FD or AP or HUD to DA.

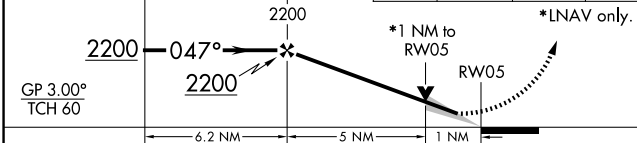


MISSED APPROACH: Climb to 2000 direct UNIKE and left turn on track 291° to PZD VOR/DME and hold.

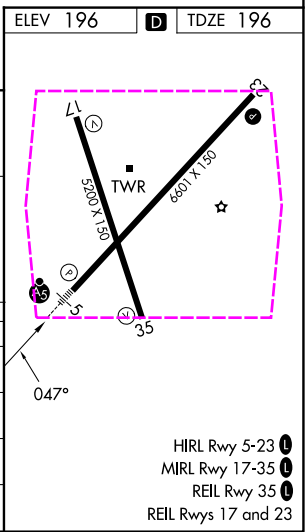
ATIS 133.05	JACKSONVILLE CENTER 125.75 363.075	ALBANY TOWER ★ 120.25 (CTAF) 0336.4	GND CON 121.9 348.6	UNICOM 122.95
-----------------------	--	---	-------------------------------	-------------------------



VGSI and RNAV glidepath not coincident (VGSI Angle 3.00/TCH 55).



CATEGORY	A	B	C	D
LPV DA**		396/24	200 (200-½)	
LNAV/VNAV DA		635/50	439 (500-1)	
LNAV MDA		580/24	384 (400-½)	580/50 384 (400-1)
CIRCLING	640-1 444 (500-1)	660-1 464 (500-1)	940-2¼ 744 (800-2¼)	940-2½ 744 (800-2½)



ALBANY, GEORGIA
Amdt 1D 26MAR20

31°32'N-84°12'W

SOUTHWEST GEORGIA RGNL (ABY)
RNAV (GPS) RWY 5

SE-4, 07 AUG 2025 to 04 SEP 2025

SE-4, 07 AUG 2025 to 04 SEP 2025