

ALBANY, GEORGIA

AL-8 (FAA)

25107

WAAS CH <b>97415</b> <b>W35A</b>	APP CRS <b>347°</b>	Rwy Idg <b>5200</b> TDZE <b>196</b> Apt Elev <b>196</b>
--	------------------------	---

# RNAV (GPS) RWY 35

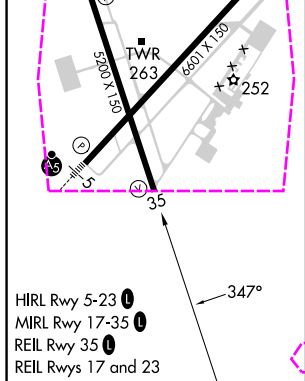
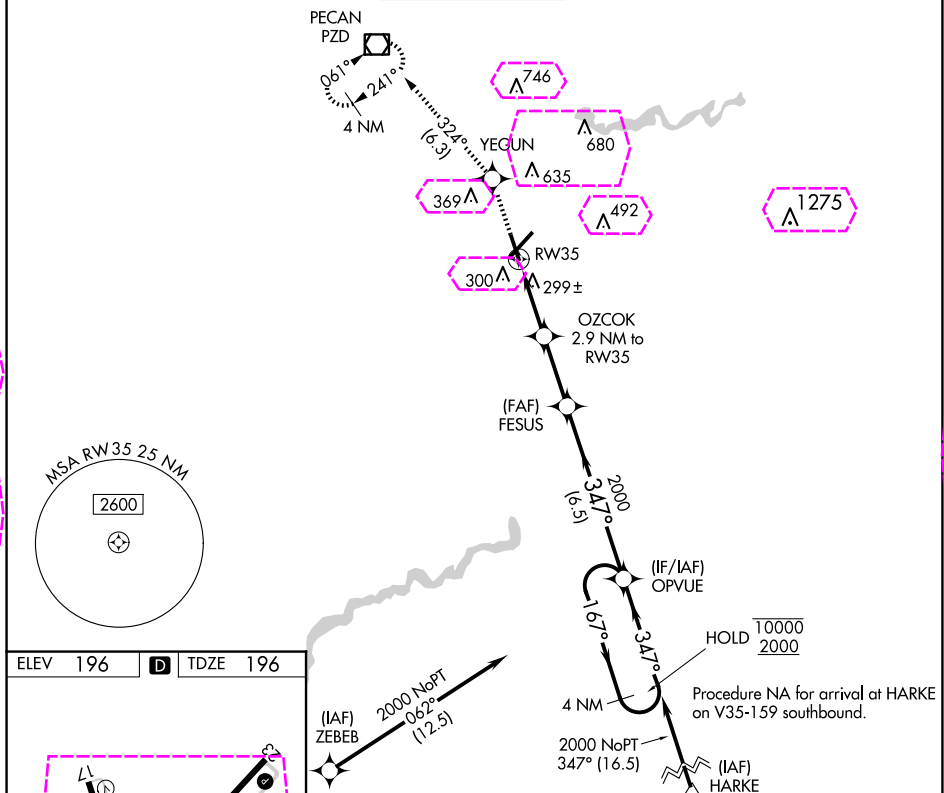
SOUTHWEST GEORGIA RGNL (ABY)

RNP APCH.

For uncompensated Baro-VNAV systems, LNAV/VNAV NA below -7°C or above 54°C. Rwy 35 helicopter visibility reduction below 3/4 SM NA.

MISSED APPROACH: Climb to 2000 direct YEGUN and on track 324° to PZD VOR/DME and hold.

ATIS <b>133.05</b>	JACKSONVILLE CENTER <b>125.75 363.075</b>	ALBANY TOWER ★ <b>120.25 (CTAF) 0336.4</b>	GND CON <b>121.9 348.6</b>	UNICOM <b>122.95</b>
-----------------------	--	---	-------------------------------	-------------------------



2000	YEGUN	tr 324°	PZD	FESUS	OPVUE	4 NM Holding Pattern
*LNAV only.	OZCOK	*1 NM to RW35	2.9 NM to RW35	347°	167°	10000
				2000	347°	2000
						GP 3.00° TCH 44
CATEGORY	A	B	C	D		
LPV DA	495-1	299 (300-1)				
LNAV/VNAV DA	475-1	279 (300-1)				
LNAV MDA	560-1	364 (400-1)				
CIRCLING	640-1 444 (500-1)	660-1 464 (500-1)	940-2 1/4 744 (800-2 1/4)	940-2 1/2 744 (800-2 1/2)		

ALBANY, GEORGIA  
Amdt 2C 26MAR20

31°32'N-84°12'W

## SOUTHWEST GEORGIA RGNL (ABY) RNAV (GPS) RWY 35

ALBANY, GEORGIA

AL-8 (FAA)

25219

WAAS CH <b>97415</b> <b>W35A</b>	APP CRS <b>347°</b>	Rwy Ldg TDZE <b>196</b> Apt Elev <b>196</b>
--	------------------------	---

# RNAV (GPS) RWY 35

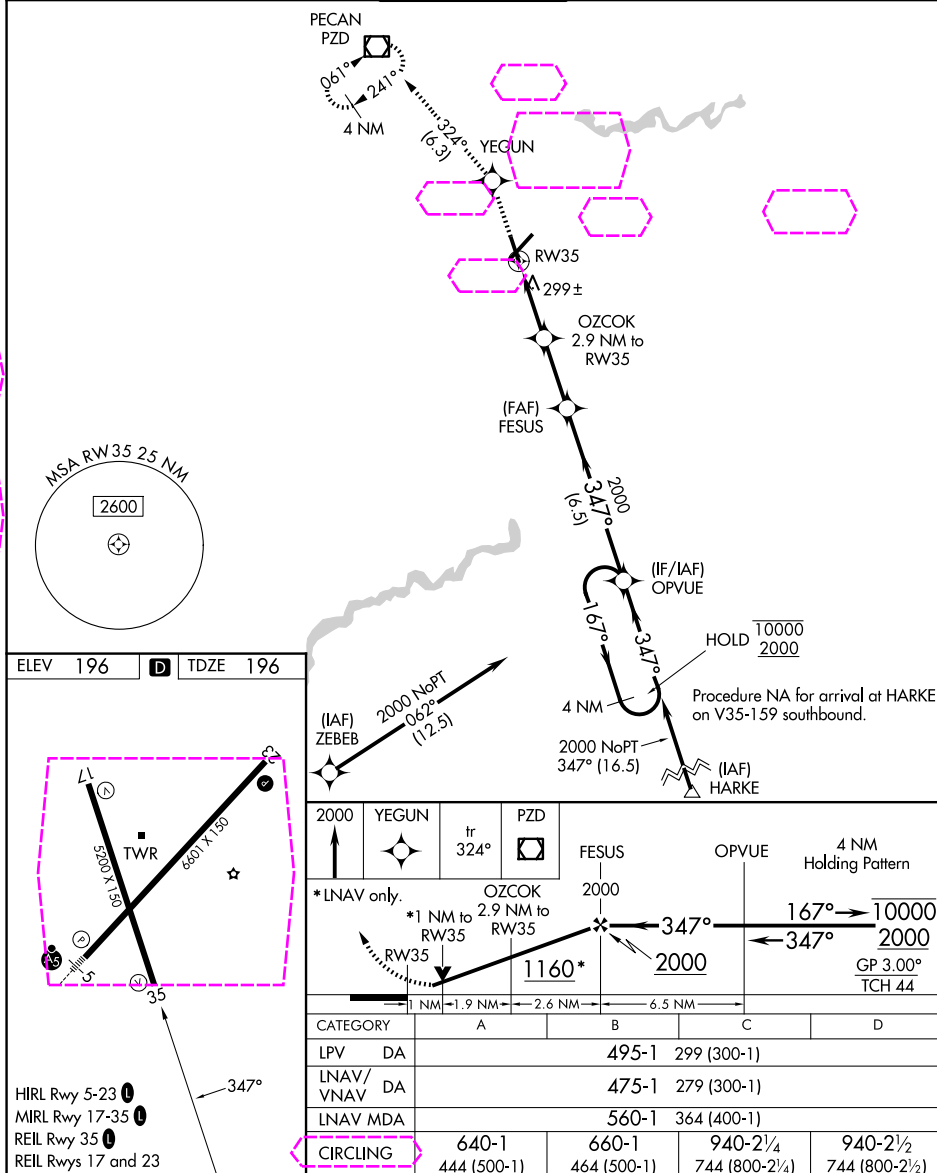
SOUTHWEST GEORGIA RGNL (ABY)

RNP APCH.

For uncompensated Baro-VNAV systems, LNAV/VNAV NA below -7°C or above 54°C. Rwy 35 helicopter visibility reduction below ¾ SM NA.

MISSED APPROACH: Climb to 2000 direct YEGUN and on track 324° to PZD VOR/DME and hold.

ATIS <b>133.05</b>	JACKSONVILLE CENTER <b>125.75 363.075</b>	ALBANY TOWER ★ <b>120.25 (CTAF) 0336.4</b>	GND CON <b>121.9 348.6</b>	UNICOM <b>122.95</b>
-----------------------	--	---	-------------------------------	-------------------------



ALBANY, GEORGIA  
Amdt 2C 26MAR20

31°32'N-84°12'W

SOUTHWEST GEORGIA RGNL (ABY)  
RNAV (GPS) RWY 35

SE-4, 07 AUG 2025 to 04 SEP 2025

SE-4, 07 AUG 2025 to 04 SEP 2025