

ALBANY, GEORGIA

AL-8 (FAA)

25107

WAAS CH 53613 W23A	APP CRS 227°	Rwy Idg 6601 TDZE 192 Apt Elev 196
--	------------------------	---

RNAV (GPS) RWY 23

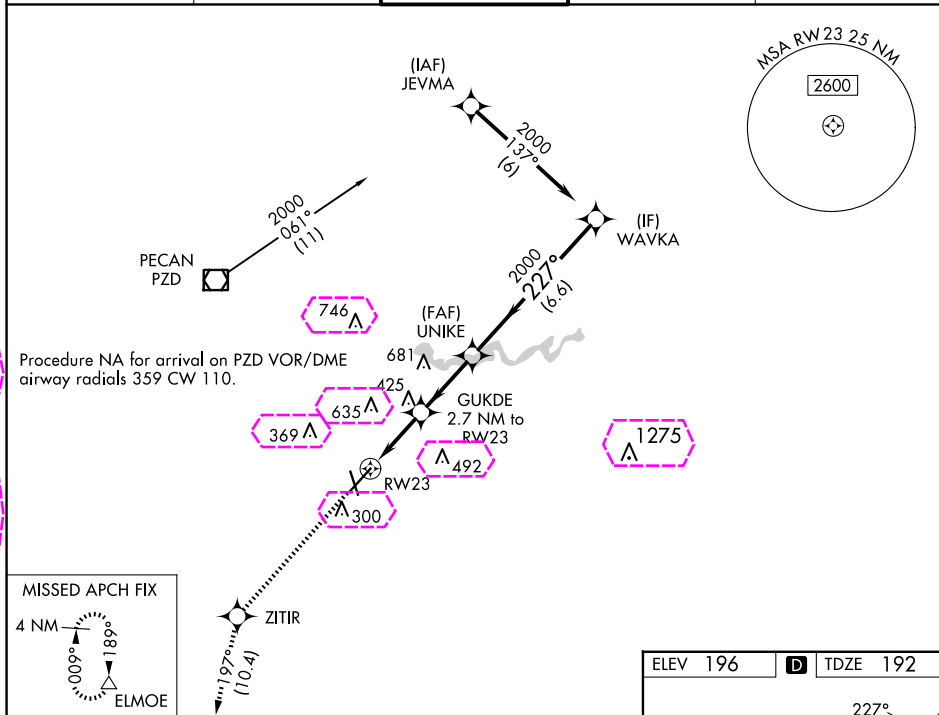
SOUTHWEST GEORGIA RGNL (ABY)

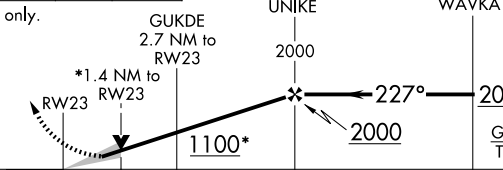
RNP APCH.

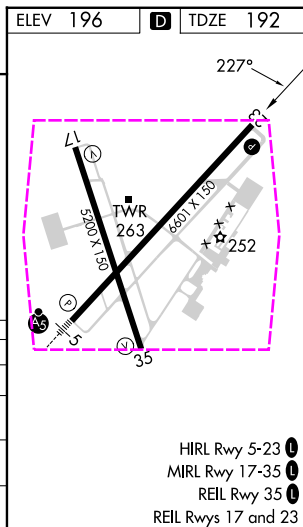
▼ For uncompensated Baro-VNAV systems, LNAV/VNAV NA below -7°C or above 54°C.

MISSED APPROACH: Climb to 3000 direct ZITIR and on track 197° to ELMOE and hold.

ATIS 133.05	JACKSONVILLE CENTER 125.75 363.075	ALBANY TOWER ★ 120.25 (CTAF) 0336.4	GND CON 121.9 348.6	UNICOM 122.95
-----------------------	--	---	-------------------------------	-------------------------



3000	ZITIR	ELMOE		
↑	✦	△		
tr 197°				
*LNAV only.				
				
CATEGORY	A	B	C	D
LPV DA		531-1¼	339 (400-1¼)	
LNAV/VNAV DA		611-1½	419 (500-1½)	
LNAV MDA	680-1	488 (500-1)	680-1¼ 488 (500-1¼)	680-1½ 488 (500-1½)
CIRCLING	680-1	484 (500-1)	940-2¼ 744 (800-2¼)	940-2½ 744 (800-2½)



ALBANY, GEORGIA
Amdt 1C 26MAR20

31°32'N-84°12'W

SOUTHWEST GEORGIA RGNL (ABY)
RNAV (GPS) RWY 23

HIRL Rwy 5-23
MIRL Rwy 17-35
REIL Rwy 35
REIL Rwy 17 and 23

ALBANY, GEORGIA

AL-8 (FAA)

25219

WAAS CH 53613 W23A	APP CRS 227°	Rwy Ldg TDZE Apt Elev	6601 192 196
--	------------------------	-----------------------------	---

RNAV (GPS) RWY 23

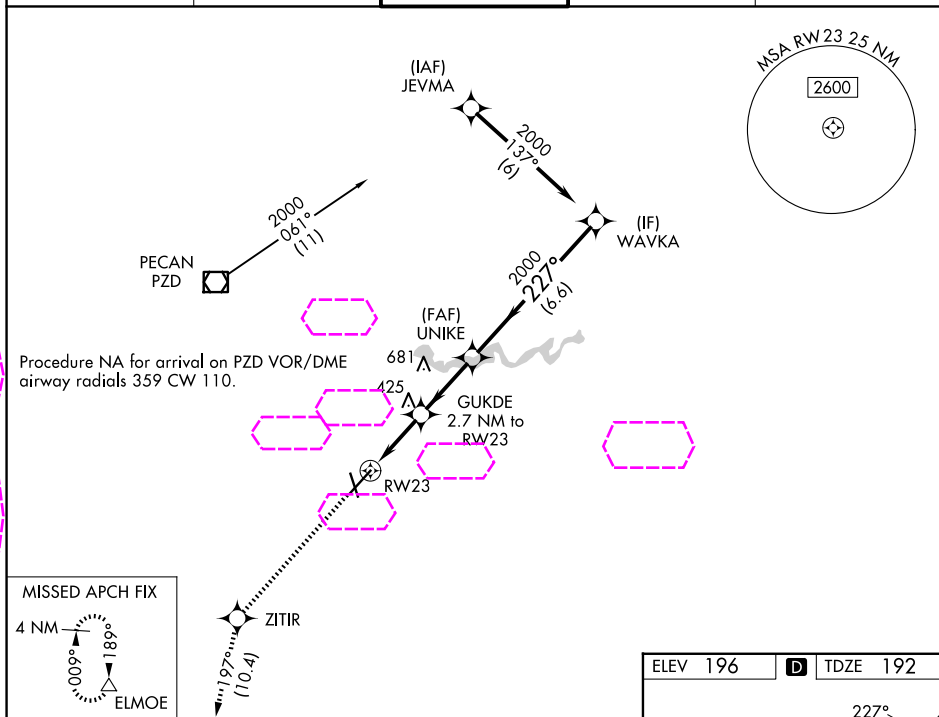
SOUTHWEST GEORGIA RGNL (ABY)

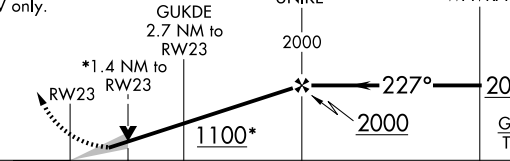
RNP APCH.

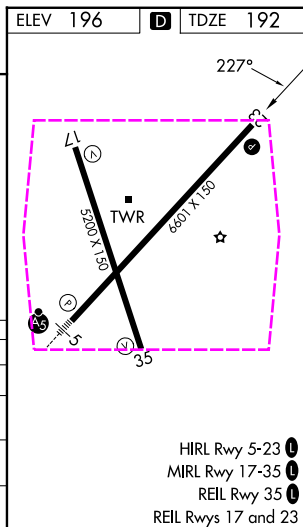
▼ For uncompensated Baro-VNAV systems, LNAV/VNAV NA below -7°C or above 54°C.

MISSED APPROACH: Climb to 3000 direct ZITIR and on track 197° to ELMOE and hold.

ATIS 133.05	JACKSONVILLE CENTER 125.75 363.075	ALBANY TOWER ★ 120.25 (CTAF) 0336.4	GND CON 121.9 348.6	UNICOM 122.95
-----------------------	--	---	-------------------------------	-------------------------



3000 ↑	ZITIR ✦	tr 197°	ELMOE △	
*LNAV only.				
				
CATEGORY	A	B	C	D
LPV DA	531-1¼		339 (400-1¼)	
LNAV/VNAV DA	611-1½		419 (500-1½)	
LNAV MDA	680-1 488 (500-1)		680-1¼ 488 (500-1¼)	680-1½ 488 (500-1½)
CIRCLING	680-1 484 (500-1)		940-2¼ 744 (800-2¼)	940-2½ 744 (800-2½)



ALBANY, GEORGIA
Amdt 1C 26MAR20

31°32'N-84°12'W

SOUTHWEST GEORGIA RGNL (ABY)
RNAV (GPS) RWY 23

HIRL Rwy 5-23
MIRL Rwy 17-35
REIL Rwy 35
REIL Rwy 17 and 23

SE-4, 07 AUG 2025 to 04 SEP 2025

SE-4, 07 AUG 2025 to 04 SEP 2025