

ALBANY, GEORGIA

AL-8 (FAA)

25107

WAAS CH 48815 W17A	APP CRS 167°	Rwy Idg 5200 TDZE 196 Apt Elev 196
--	------------------------	---

RNAV (GPS) RWY 17

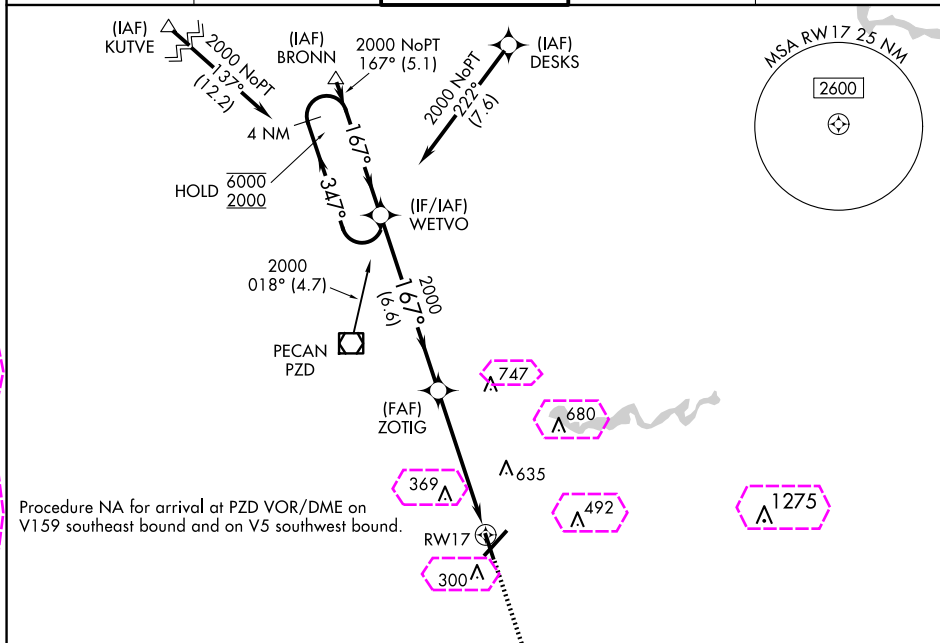
SOUTHWEST GEORGIA RGNL (ABY)

RNP APCH.

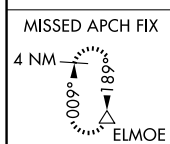
▼ Rwy 17 helicopter visibility reduction below $\frac{3}{4}$ SM NA. For uncompensated
▲ Baro-VNAV systems, LNAV/VNAV NA below -7°C or above 54°C.

MISSED APPROACH: Climb to 3000 direct TUPGE and on track 226° to ELMOE and hold.

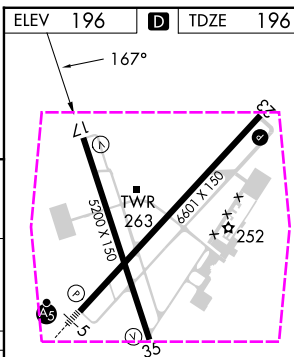
ATIS 133.05	JACKSONVILLE CENTER 125.75 363.075	ALBANY TOWER ★ 120.25 (CTAF) 0336.4	GND CON 121.9 348.6	UNICOM 122.95
-----------------------	--	---	-------------------------------	-------------------------



Procedure NA for arrival at PZD VOR/DME on V159 southeast bound and on V5 southwest bound.



4 NM Holding Pattern		WETVO	ZOTIG	TUPGE	ELMOE
6000 ← 347°		167° →	2000	3000	tr 226°
2000		167°	2000	*1.2 NM to RWY17	*LNAV only.
GP 3.00°					
TCH 52					
		6.6 NM	4.2 NM	1.2	
CATEGORY	A	B	C	D	
LPV DA		534-1 $\frac{1}{4}$	338 (400-1 $\frac{1}{4}$)		
LNAV/VNAV DA		603-1 $\frac{1}{2}$	407 (500-1 $\frac{1}{2}$)		
LNAV MDA	640-1	444 (500-1)	640-1 $\frac{1}{4}$ 444 (500-1 $\frac{1}{4}$)	640-1 $\frac{1}{2}$ 444 (500-1 $\frac{1}{2}$)	
CIRCLING	640-1 444 (500-1)	660-1 464 (500-1)	940-2 $\frac{1}{4}$ 744 (800-2 $\frac{1}{4}$)	940-2 $\frac{1}{2}$ 744 (800-2 $\frac{1}{2}$)	



HIRL Rwy 5-23
MIRL Rwy 17-35
REIL Rwy 35
REIL Rwy 17 and 23

ALBANY, GEORGIA
Amdt 1C 26MAR20

31°32'N-84°12'W

SOUTHWEST GEORGIA RGNL (ABY)
RNAV (GPS) RWY 17

ALBANY, GEORGIA

AL-8 (FAA)

25219

WAAS CH 48815 W17A	APP CRS 167°	Rwy Ldg 5200 TDZE 196 Apt Elev 196
--	------------------------	---

RNAV (GPS) RWY 17

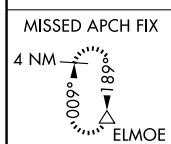
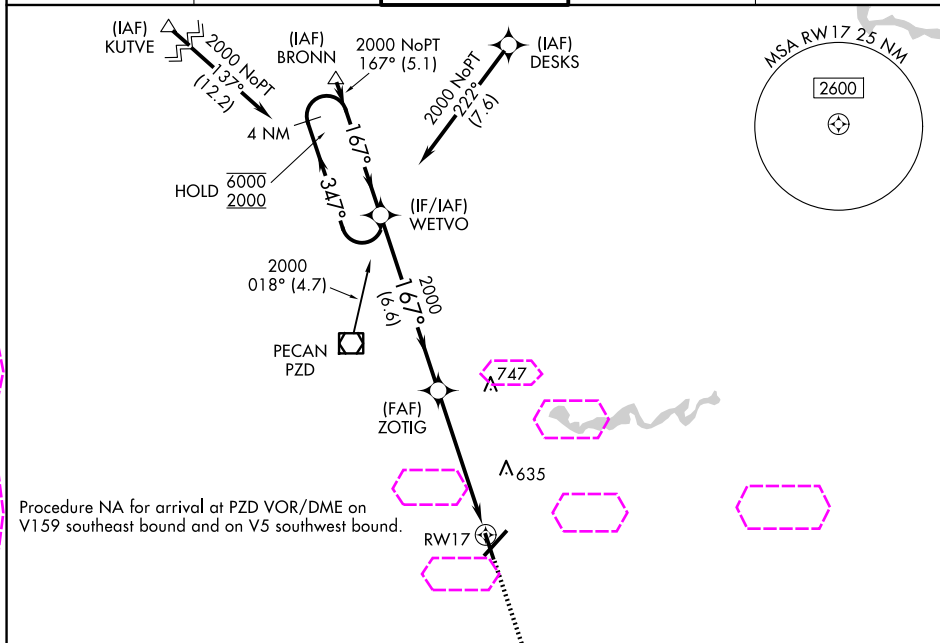
SOUTHWEST GEORGIA RGNL (ABY)

RNP APCH.

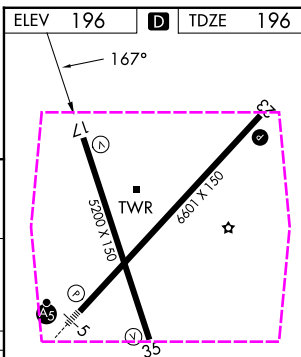
▼ Rwy 17 helicopter visibility reduction below $\frac{3}{4}$ SM NA. For uncompensated
▲ Baro-VNAV systems, LNAV/VNAV NA below -7°C or above 54°C.

MISSED APPROACH: Climb to 3000 direct TUPGE and on track 226° to ELMOE and hold.

ATIS 133.05	JACKSONVILLE CENTER 125.75 363.075	ALBANY TOWER ★ 120.25 (CTAF) 0336.4	GND CON 121.9 348.6	UNICOM 122.95
-----------------------	--	---	-------------------------------	-------------------------



4 NM Holding Pattern		WETVO	ZOTIG	TUPGE	ELMOE
6000 ← 347°		167° →	2000	3000	tr 226°
2000		167°	2000	*1.2 NM to RWY 17	*LNAV only.
GP 3.00°					
TCH 52					
		6.6 NM	4.2 NM	1.2	
CATEGORY	A	B	C	D	
LPV DA		534-1¼	338 (400-1¼)		
LNAV/VNAV DA		603-1½	407 (500-1½)		
LNAV MDA	640-1	444 (500-1)	640-1¼ 444 (500-1¼)	640-1½ 444 (500-1½)	
CIRCLING	640-1 444 (500-1)	660-1 464 (500-1)	940-2¼ 744 (800-2¼)	940-2½ 744 (800-2½)	



ALBANY, GEORGIA
Amdt 1C 26MAR20

31°32'N-84°12'W

SOUTHWEST GEORGIA RGNL (ABY)
RNAV (GPS) RWY 17

HIRL Rwy 5-23
MIRL Rwy 17-35
REIL Rwy 35
REIL Rws 17 and 23

SE-4, 07 AUG 2025 to 04 SEP 2025

SE-4, 07 AUG 2025 to 04 SEP 2025