

ALBANY, GEORGIA

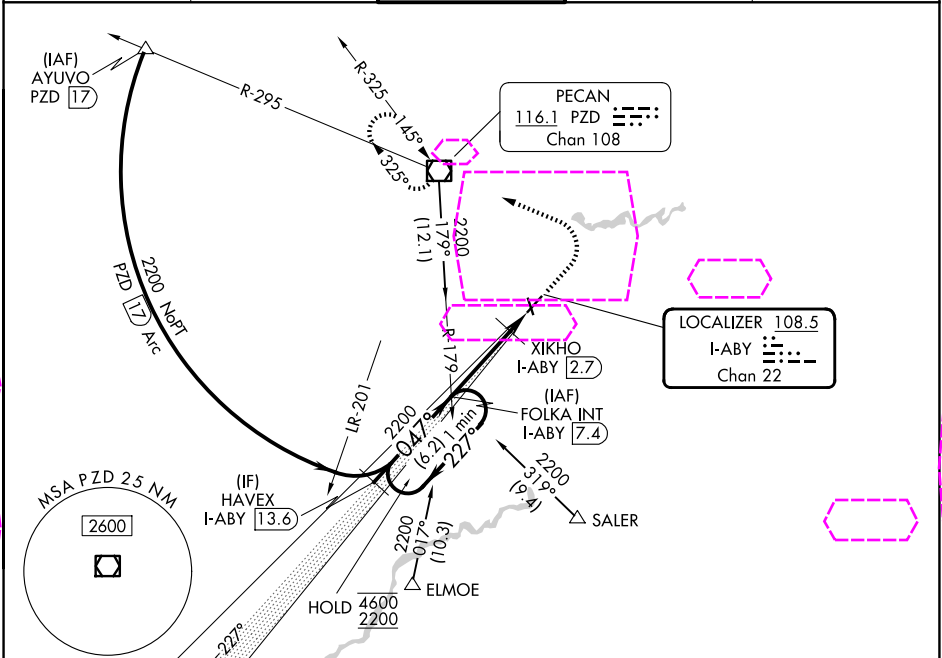
AL-8 (FAA)

25219

LOC/DME I-ABY 108.5 Chan 22	APP CRS 047°	Rwy Ldg TDZE 196 Apt Elev 196
---	------------------------	---

ILS or LOC RWY 5
SOUTHWEST GEORGIA RGNL (ABY)

From ELMOE and SALER: RNAV-1 GPS required.		MALSR	MISSED APPROACH: Climb to 1000 then climbing left turn to 3000 direct PZD VOR/DME and hold.	
For inop ALS, increase S-LOC 5 Cats C/D visibility to 1½ SM and XIKHO fix minimums S-LOC 5 Cats C/D visibility to RVR 5500.		As		
ATIS 133.05	JACKSONVILLE CENTER 125.75 363.075	ALBANY TOWER * 120.25 (CTAF) 0336.4	GND CON 121.9 348.6	UNICOM 122.95



VGSI and ILS glidepath not coincident (VGSI Angle 3.00/TCH 55).

One Minute Holding Pattern

FOLKA INT I-ABY 7.4

2200

4600 ← 227°

2200 → 047°

GS 3.00° TCH 60

2200

4.7 NM

1.4 NM

*680

XIKHO I-ABY 2.7

I-ABY 1.3

3000

PZD

*LOC only.

CATEGORY	A	B	C	D
S-ILS 5	396/24 200 (200-½)			
S-LOC 5	680/24	484 (500-½)	680/50	484 (500-1)
CIRCLING	680-1	484 (500-1)	940-2¼ 744 (800-2¼)	940-2½ 744 (800-2½)
XIKHO FIX MINIMUMS (DME REQUIRED)				
S-LOC 5	560/24	364 (400-½)	560/35	364 (400-¾)
CIRCLING	640-1 444 (500-1)	660-1 464 (500-1)	940-2¼ 744 (800-2¼)	940-2½ 744 (800-2½)

ELEV 196 D TDZE 196

HIRL Rwy 5-23 1

MIRL Rwy 17-35 1

REIL Rwy 35 1

REIL Rws 17 and 23

FAF to MAP 6.1 NM

Knots	60	90	120	150	180
Min:Sec	6:06	4:04	3:03	2:26	2:02