

AKRON, OHIO


AL-6 (FAA)


24025

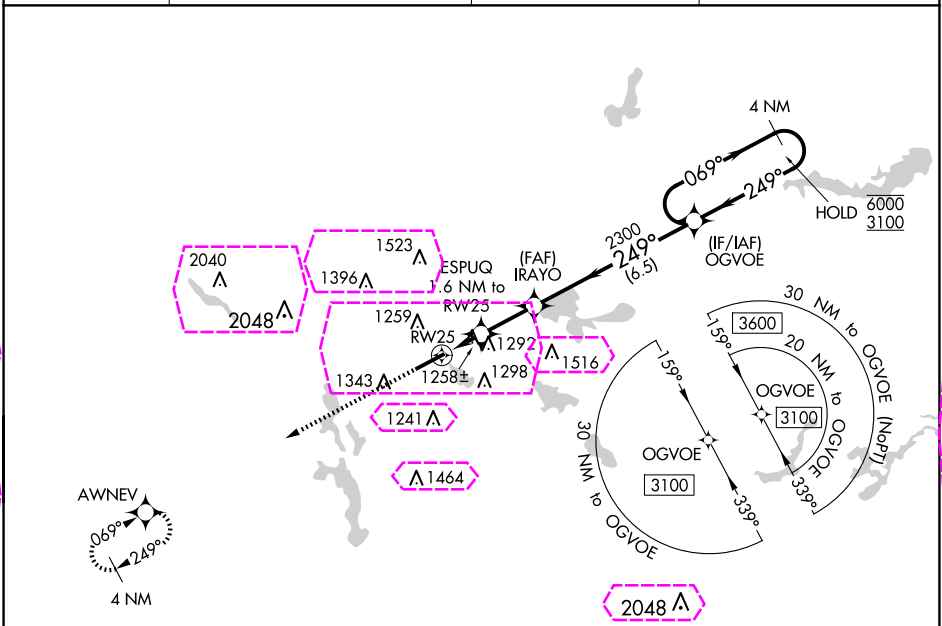
WAAS CH 99735 W25A	APP CRS 249°	Rwy Idg 6074 TDZE 1059 Apt Elev 1068
--	------------------------	---

RNAV (GPS) RWY 25

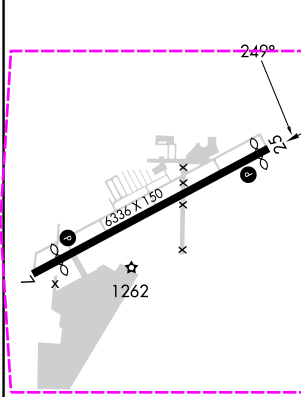
AKRON FULTON INTL (AKR)


RNP APCH.	MISSED APPROACH: Climb to 3100 direct AWNEV and hold.
 Rwy 25 helicopter visibility reduction below 1 SM NA. Circling Rwy 7 NA at night.	



ASOS 126.825	CLEVELAND APP CON ★ 125.5 371.875	CLNC DEL 121.6	UNICOM 123.075 (CTAF) 
------------------------	---	--------------------------	---



ELEV 1068	TDZE 1059
-----------	-----------



		Visual Segment - Obstacles.		4 NM Holding Pattern	
		ESPUQ 1.6 NM to RW25		OGVOE	
		IRAYO		069° → 6000	
		RW25		← 249° 3100	
		1600			
		2300			
		1.6 NM 2.2 NM 6.5 NM			
CATEGORY		A	B	C	D
LP MDA		1520-1 461 (500-1)		1520-1 3/8 461 (500-1 3/8)	
LNNAV MDA		1560-1 501 (500-1)		1560-1 3/8 501 (500-1 3/8)	
 CIRCLING		1600-1 532 (600-1)	1680-1 612 (700-1)	1800-2 732 (800-2)	1840-2 1/2 772 (800-2 1/2)

REIL Rwy 7 and 25 
MIRL Rwy 7-25 

AKRON, OHIO
Orig-D 08SEP22

41°02'N-81°28'W

RNAV (GPS) RWY 25

EC-2, 10 JUL 2025 to 07 AUG 2025

EC-2, 10 JUL 2025 to 07 AUG 2025

AKRON, OHIO

AL-6 (FAA)

25219

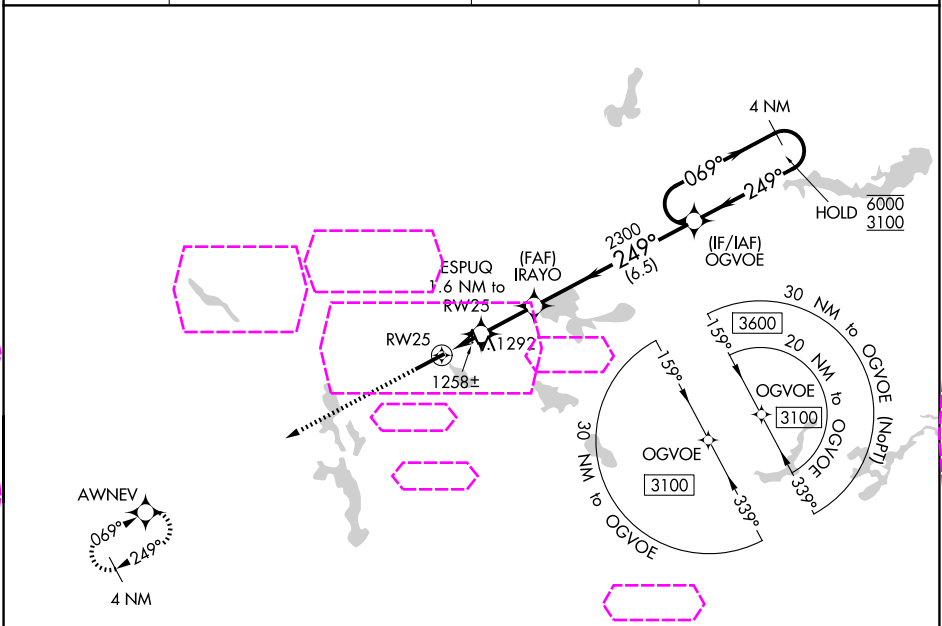
WAAS CH 99735 W25A	APP CRS 249°	Rwy Ldg TDZE 1059 Apt Elev 1068
--	------------------------	---

RNAV (GPS) RWY 25

AKRON FULTON INTL (AKR)

RNP APCH.	MISSED APPROACH: Climb to 3100 direct AWNEV and hold.
Rwy 25 helicopter visibility reduction below 1 SM NA. Circling Rwy 7 NA at night.	

ASOS 126.825	CLEVELAND APP CON ★ 125.5 371.875	CLNC DEL 121.6	UNICOM 123.075 (CTAF)
------------------------	---	--------------------------	---------------------------------



ELEV 1068	TDZE 1059
-----------	-----------

