

NDB RWY 25

AKRON, OHIO

AL-6 (FAA)

25219

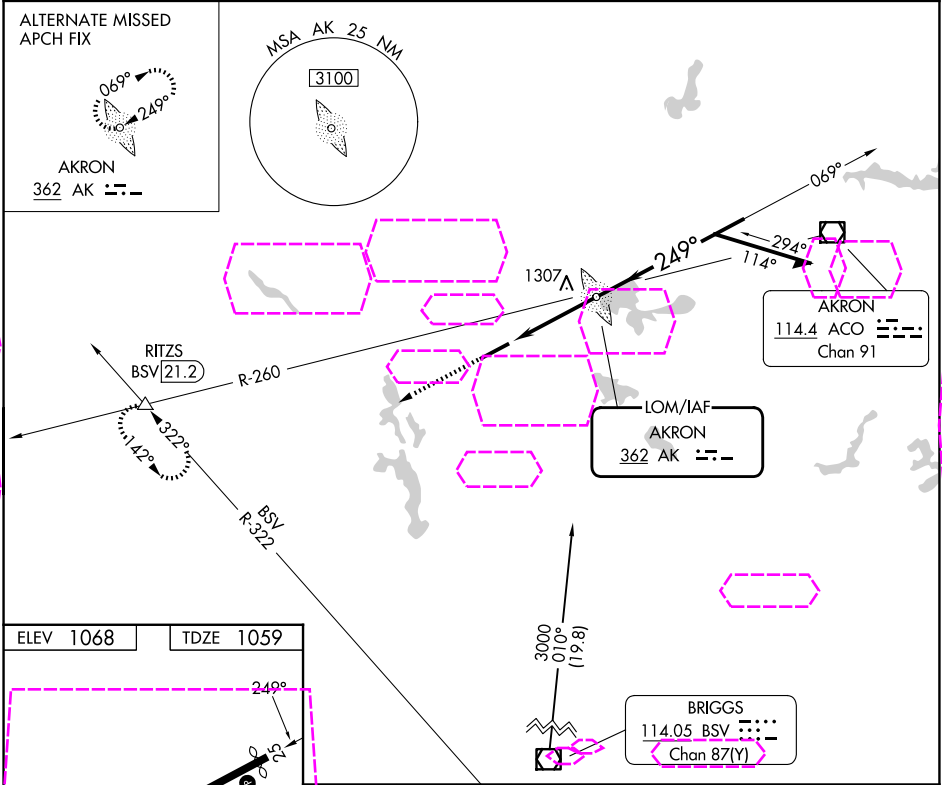
LOM AK 362	APP CRS 249°	Rwy Ldg TDZE 1059 Apt Elev 1068
----------------------	------------------------	---

NDB RWY 25
AKRON FULTON INTL (AKR)

⚠ Rwy 25 helicopter visibility reduction below 1 SM NA.
⚠ Circling Rwy 7 NA at night.

MISSED APPROACH: Climb to 3100 on heading 249° and
BSV VOR/DME R-322 to RITZS INT/BSV 21.2 DME and hold.

ASOS 126.825	CLEVELAND APP CON ★ 125.5 371.875	CLNC DEL 121.6	UNICOM 123.075 (CTAF) 0
------------------------	---	--------------------------	-----------------------------------



3100

↑

hdg 249°

BSV

R-322

RITZS

△

Visual Segment - Obstacles.

AK LOM

069°

249°

3000

2300

Remain within 10 NM

RW25

3.7 NM

REIL Rwys 7 and 25 0

MIRL Rwy 7-25 0

FAF to MAP 3.7 NM

Knots	60	90	120	150	180
Min:Sec	3:42	2:28	1:51	1:29	1:14

CATEGORY	A	B	C	D
S-25	1620-1	561 (600-1)	1620-1½	561 (600-1½)
CIRCLING	1620-1	1680-1	1800-2	1840-2½
	552 (600-1)	612 (700-1)	732 (800-2)	772 (800-2½)

AKRON, OHIO

Amdt 15D 08SEP22

41°02'N-81°28'W

AKRON FULTON INTL (AKR)

NDB RWY 25

EC-2, 07 AUG 2025 to 04 SEP 2025

EC-2, 07 AUG 2025 to 04 SEP 2025