

LOC/DME I-AKR 110.9 Chan 46	APP CRS 249°	Rwy Idg 6074 TDZE 1059 Apt Elev 1068
---	------------------------	--

LOC RWY 25

AKRON FULTON INTL (AKR)

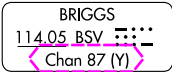
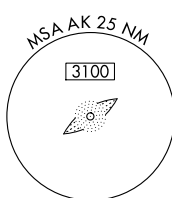
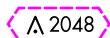
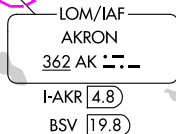
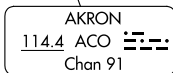
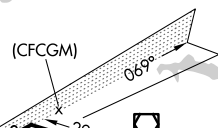
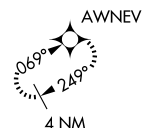
ADF or DME or RADAR required for procedure entry.

T Rwy 25 helicopter visibility reduction below 1 SM NA.
A Circling Rwy 7 NA at night.

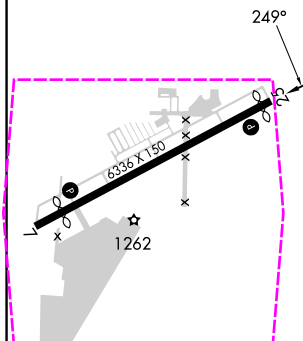
MISSED APPROACH: Climb to 3100 on heading 249° and BSV VOR/DME R-322 to RITZS INT/BSV 21.2 DME and hold.

ASOS 126.825	CLEVELAND APP CON ★ 125.5 371.875	CLNC DEL 121.6	UNICOM 123.075 (CTAF) 0
------------------------	---	--------------------------	-----------------------------------

ALTERNATE MISSED
APCH FIX



ELEV 1068		TDZE 1059
-----------	--	-----------



REIL Rwy 7 and 25 **L**
MIRL Rwy 7-25 **L**

FAF to MAP 3.7 NM

Knots	60	90	120	150	180
Min:Sec	3:42	2:28	1:51	1:29	1:14

Visual Segment - Obstacles.

CATEGORY	A	B	C	D
S-LOC 25	1560-1	501 (500-1)	1560-1 $\frac{3}{8}$	501 (500-1 $\frac{3}{8}$)
CIRCLING	1600-1 532 (600-1)	1680-1 612 (700-1)	1800-2 732 (800-2)	1840-2 $\frac{1}{2}$ 772 (800-2 $\frac{1}{2}$)

AKRON, OHIO

Amdt 14C 08SEP22

41°02'N-81°28'W

AKRON FULTON INTL (AKR)

LOC RWY 25

EC-2, 10 JUL 2025 to 07 AUG 2025

EC-2, 10 JUL 2025 to 07 AUG 2025

AKRON, OHIO

AL-6 (FAA)

25219

LOC/DME I-AKR 110.9 Chan 46	APP CRS 249°	Rwy Ldg TDZE Apt Elev	6074 1059 1068
---	------------------------	-----------------------------	---

LOC RWY 25

AKRON FULTON INTL (AKR)

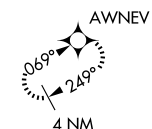
ADF or DME or RADAR required for procedure entry.

▼ Rwy 25 helicopter visibility reduction below 1 SM NA.
▲ Circling Rwy 7 NA at night.

MISSED APPROACH: Climb to 3100 on heading 249° and BSV VOR/DME R-322 to RITZS INT/BSV 21.2 DME and hold.

ASOS 126.825	CLEVELAND APP CON ★ 125.5 371.875	CLNC DEL 121.6	UNICOM 123.075 (CTAF) 0
------------------------	---	--------------------------	-----------------------------------

ALTERNATE MISSED APCH FIX

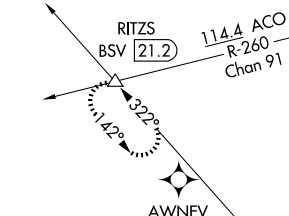


LOCALIZER **110.9**
I-AKR
Chan **46**

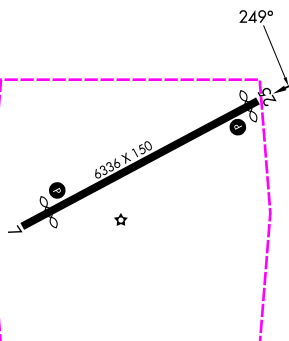
(CFCGM)

AKRON
114.4 ACO
Chan **91**

LOM/IAF
AKRON
362 AK
I-AKR **4.8**
BSV **19.8**



ELEV 1068 TDZE 1059



REIL Rwys 7 and 25
MRL Rwy 7-25

FAF to MAP 3.7 NM

Knots	60	90	120	150	180
Min:Sec	3:42	2:28	1:51	1:29	1:14

	3100	BSV R-322	RITZS △	AK LOM I-AKR 4.8	Remain within 10 NM
	hdg 249°				
	Visual Segment - Obstacles.				
	I-AKR 1.2				
	2300				
	3.7 NM				
CATEGORY	A	B	C	D	
S-LOC 25	1560-1	501 (500-1)	1560-1 $\frac{3}{8}$	501 (500-1 $\frac{3}{8}$)	
CIRCLING	1600-1 532 (600-1)	1680-1 612 (700-1)	1800-2 732 (800-2)	1840-2 $\frac{1}{2}$ 772 (800-2 $\frac{1}{2}$)	

AKRON, OHIO

Amdt 14C 08SEP22

41°02'N-81°28'W

AKRON FULTON INTL (AKR)

LOC RWY 25

EC-2, 07 AUG 2025 to 04 SEP 2025

EC-2, 07 AUG 2025 to 04 SEP 2025