

ABILENE, TEXAS

AL-1 (FAA)

22307

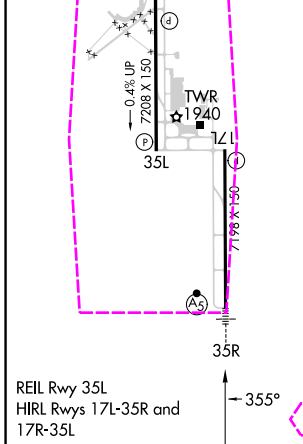
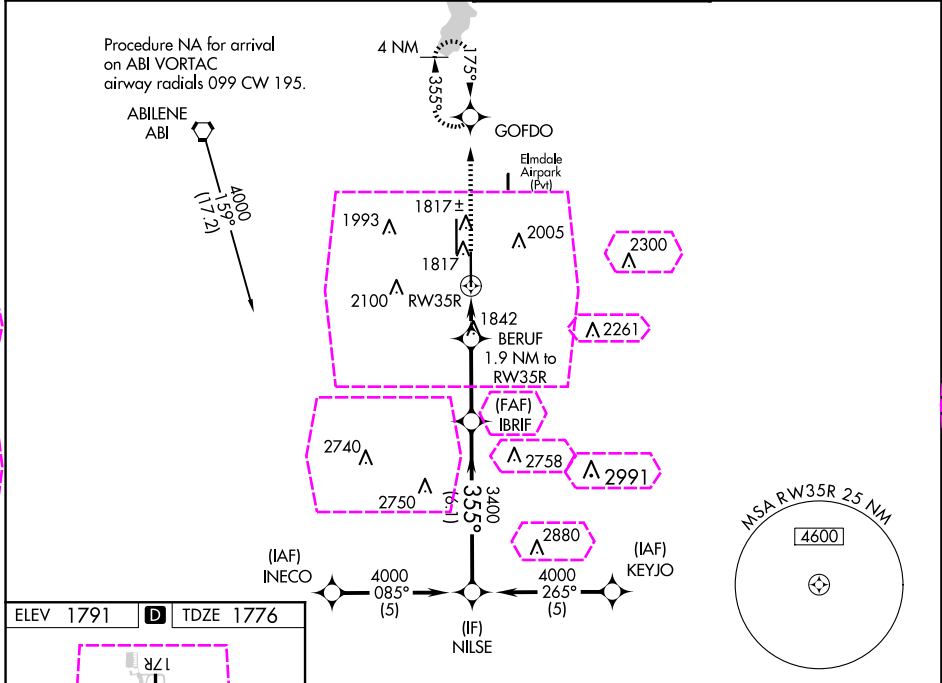
WAAS CH <b>97517</b> <b>W35A</b>	APP CRS <b>355°</b>	Rwy Idg <b>7198</b> TDZE <b>1776</b> Apt Elev <b>1791</b>
----------------------------------------	------------------------	-----------------------------------------------------------------

# RNAV (GPS) RWY 35R

ABILENE RGNL (ABI)

RNP APCH.		MALSR	MISSED APPROACH: Climb to 4000 direct GOFDO and hold, continue climb-in-hold to 4000.
For uncompensated Baro-VNAV systems, LNAV/VNAV NA below -18°C or above 45°C. For inop ALS, increase LPV Cat E visibility to RVR 4000, LNAV/VNAV all Cats to RVR 6000, and LNAV Cats C/D/E to 1¾ SM. ** RVR 1800 authorized with use of FD or AP or HUD to DA.			

ATIS <b>118.25</b>	ABILENE APP CON <b>125.0 338.3 (EAST)</b> <b>127.2 282.3 (WEST)</b>	ABILENE TOWER <b>120.1 257.8</b>	GND CON <b>121.7 348.6</b>
-----------------------	---------------------------------------------------------------------------	-------------------------------------	-------------------------------



4000	GOFDO	BERUF	IBRIF	NILSE	4000
*LNAV only.					
*1.3 NM to RW35R					
*2440					
GP 3.00° TCH 58					
CATEGORY	A	B	C	D	E
LPV	DA**	1976/24 200 (200-½)			
LNAV/VNAV	DA	2189/40 413 (400-¾)			2189/50 413 (400-1)
LNAV MDA	2260/24 484 (500-½)		2260/50 484 (500-1)		
CIRCLING	2300-1 509 (600-1)	2320-1 529 (600-1)	2420-1¾ 629 (700-1¾)	2460-2 669 (700-2)	2620-3 829 (900-3)

ABILENE, TEXAS  
Amdt 1C 10OCT19

32°25'N-99°41'W

ABILENE RGNL (ABI)

# RNAV (GPS) RWY 35R

ABILENE, TEXAS

AL-1 (FAA)

25219

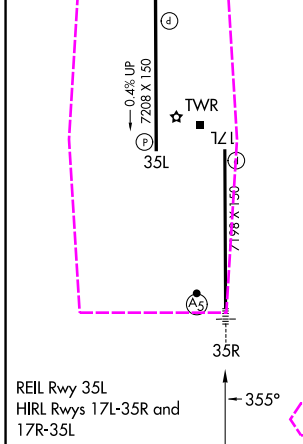
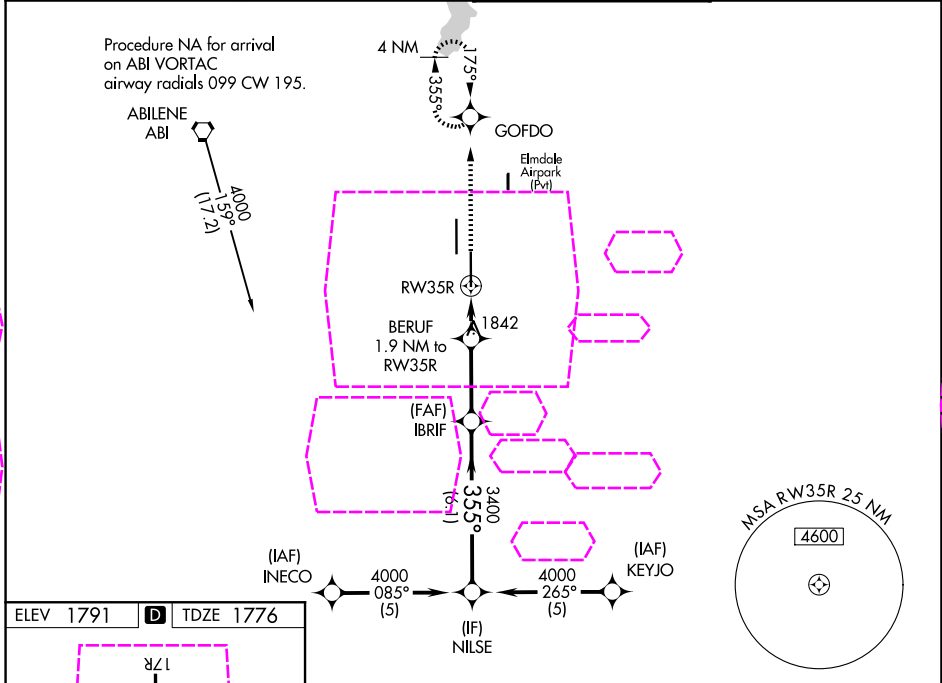
WAAS CH <b>97517</b> <b>W35A</b>	APP CRS <b>355°</b>	Rwy Ldg TDZE <b>1776</b> Apt Elev <b>1791</b>
----------------------------------------	------------------------	-----------------------------------------------------

# RNAV (GPS) RWY 35R

ABILENE RGNL (ABI)

RNP APCH.	MALSR	MISSED APPROACH: Climb to 4000 direct GOFDO and hold, continue climb-in-hold to 4000.
For uncompensated Baro-VNAV systems, LNAV/VNAV NA below -18°C or above 45°C. For inop ALS, increase LPV Cat E visibility to RVR 4000, LNAV/VNAV all Cats to RVR 6000, and LNAV Cats C/D/E to 1½ SM. ** RVR 1800 authorized with use of FD or AP or HUD to DA.		

ATIS <b>118.25</b>	ABILENE APP CON <b>125.0 338.3 (EAST)</b> <b>127.2 282.3 (WEST)</b>	ABILENE TOWER <b>120.1 257.8</b>	GND CON <b>121.7 348.6</b>
-----------------------	---------------------------------------------------------------------------	-------------------------------------	-------------------------------



4000	GOFDO	IBRIF	NILSE
*LNAV only.			
BERUF 1.9 NM to RWY 35R			
*1.3 NM to RWY 35R			
*2440			
GP 3.00° TCH 58			
CATEGORY A B C D E			
LPV DA** 1976/24 200 (200-½)			
LNAV/VNAV DA 2189/40 413 (400-¾) 2189/50 413 (400-1)			
LNAV MDA 2260/24 484 (500-½) 2260/50 484 (500-1)			
CIRCLING 2300-1 2320-1 2420-1¾ 2460-2 2620-3			
509 (600-1) 529 (600-1) 629 (700-1¾) 669 (700-2) 829 (900-3)			

ABILENE, TEXAS  
Amdt 1C 10OCT19

32°25'N-99°41'W

ABILENE RGNL (ABI)

# RNAV (GPS) RWY 35R

SC-2, 07 AUG 2025 to 04 SEP 2025

SC-2, 07 AUG 2025 to 04 SEP 2025