

ABILENE, TEXAS

AL-1 (FAA)

22307

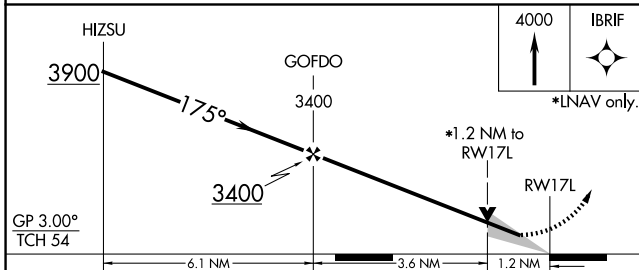
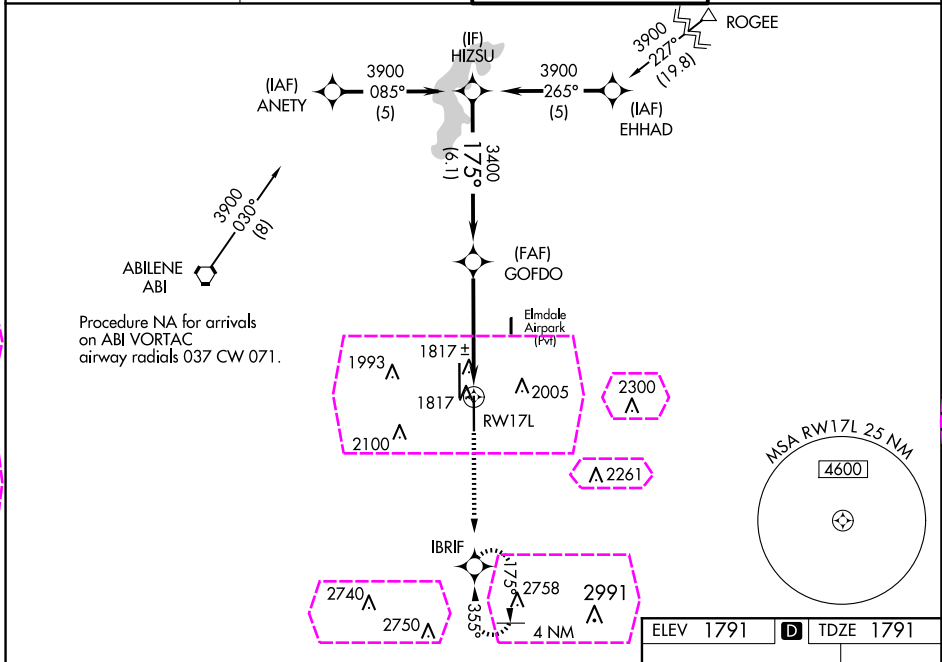
WAAS CH 50317 W17A	APP CRS 175°	Rwy Idg 7198 TDZE 1791 Apt Elev 1791
--	------------------------	---

RNAV (GPS) RWY 17L

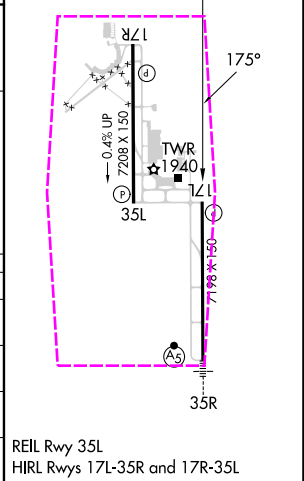
ABILENE RGNL (ABI)

RNP APCH.	MISSED APPROACH: Climb to 4000 direct IBRIF and hold, continue climb-in-hold to 4000.
For uncompensated Baro-VNAV systems, LNAV/VNAV NA below -18°C or above 45°C.	

ATIS 118.25	ABILENE APP CON 125.0 338.3 (EAST) 127.2 282.3 (WEST)	ABILENE TOWER 120.1 257.8	GND CON 121.7 348.6
-----------------------	---	-------------------------------------	-------------------------------



CATEGORY	A	B	C	D	E
LPV DA	2041-3/4 250 (300-3/4)				
LNAV/VNAV DA	2171-1 1/4 380 (400-1 1/4)				
LNAV MDA	2240-1	449 (500-1)	2240-1 3/8	449 (500-1 3/8)	
CIRCLING	2300-1 509 (600-1)	2320-1 529 (600-1)	2420-1 3/4 629 (700-1 3/4)	2460-2 669 (700-2)	2620-3 829 (900-3)



ABILENE, TEXAS

Amdt 1B 20JUN19

32°25'N-99°41'W

ABILENE RGNL (ABI)

RNAV (GPS) RWY 17L

ABILENE, TEXAS


AL-1 (FAA)

25219

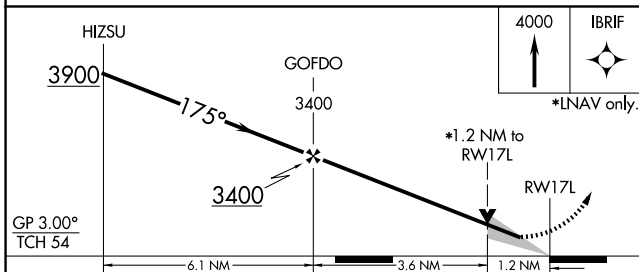
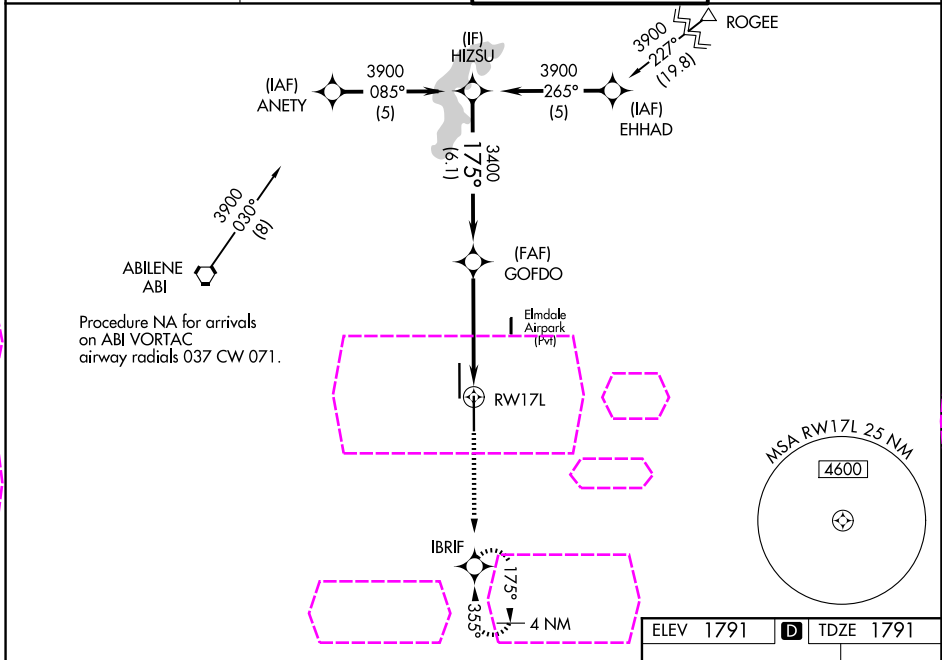
WAAS CH 50317 W17A	APP CRS 175°	Rwy Ldg TDZE 1791 Apt Elev 1791
--	------------------------	---

RNAV (GPS) RWY 17L

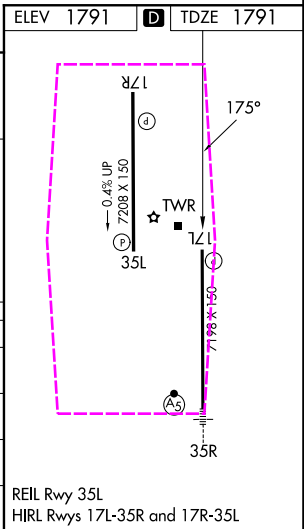
ABILENE RGNL (ABI)

RNP APCH.	MISSED APPROACH: Climb to 4000 direct IBRIF and hold, continue climb-in-hold to 4000.
 For uncompensated Baro-VNAV systems, LNAV/VNAV NA below -18°C or above 45°C.	

ATIS 118.25	ABILENE APP CON 125.0 338.3 (EAST) 127.2 282.3 (WEST)	ABILENE TOWER 120.1 257.8	GND CON 121.7 348.6
-----------------------	---	-------------------------------------	-------------------------------



CATEGORY	A	B	C	D	E
LPV DA	2041-3/4	250 (300-3/4)			
LNAV/VNAV DA	2171-1 1/4	380 (400-1 1/4)			
LNAV MDA	2240-1	449 (500-1)	2240-1 3/8	449 (500-1 3/8)	
CIRCLING	2300-1 509 (600-1)	2320-1 529 (600-1)	2420-1 3/4 629 (700-1 3/4)	2460-2 669 (700-2)	2620-3 829 (900-3)



ABILENE, TEXAS

Amdt 1B 20JUN19

32°25'N-99°41'W

ABILENE RGNL (ABI)

RNAV (GPS) RWY 17L