

ABILENE, TEXAS

AL-1 (FAA)

24305

LOC/DME I-EMB 109.75 Chan 34 (Y)	APP CRS 175°	Rwy Idg 7202 TDZE 1771 Apt Elev 1791
--	------------------------	---

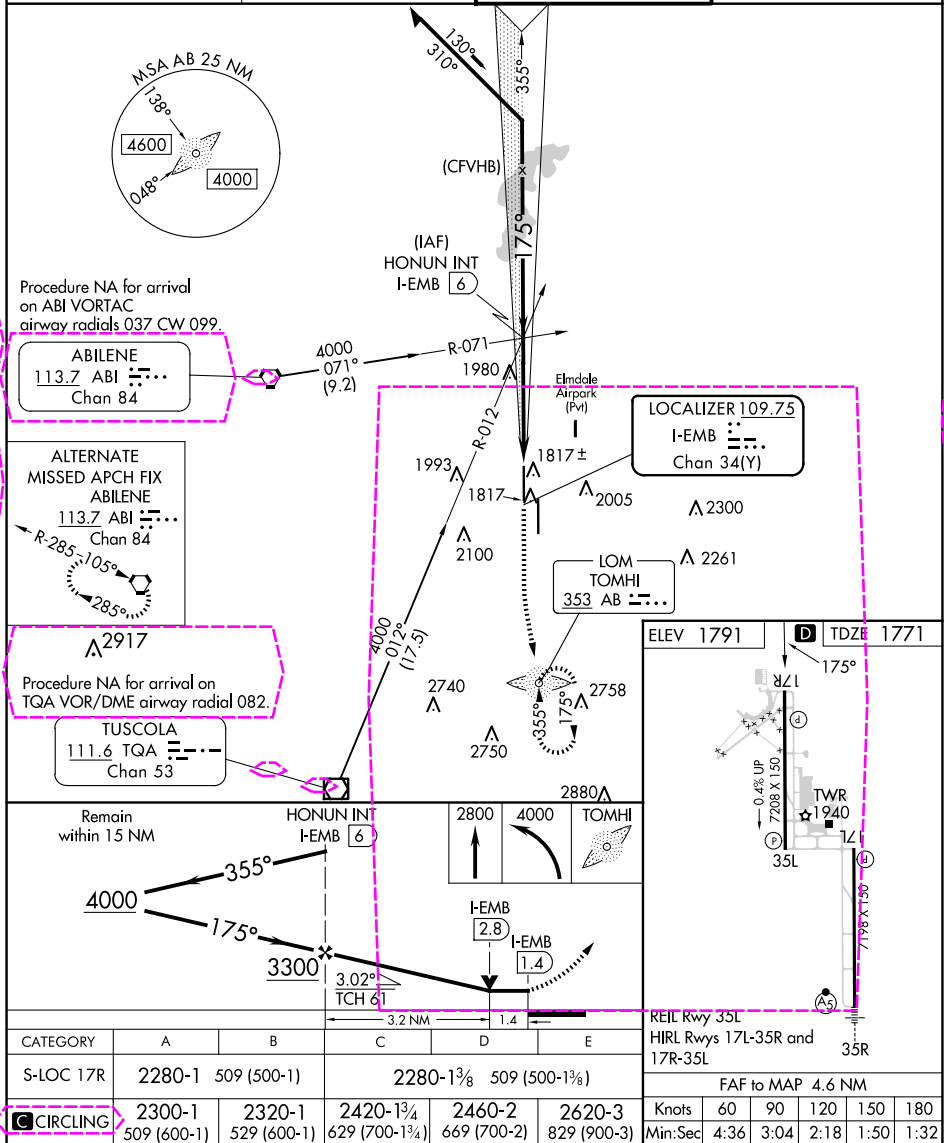
LOC RWY 17R

ABILENE RGNL (ABI)

ADF required for missed approach.

MISSED APPROACH: Climb to 2800 then climbing left turn to 4000 direct TOMHI LOM and hold.

ATIS 118.25	ABILENE APP CON 125.0 338.3 (EAST) 127.2 282.3 (WEST)	ABILENE TOWER 120.1 257.8	GND CON 121.7 348.6
-----------------------	---	-------------------------------------	-------------------------------



SC-2, 10 JUL 2025 to 07 AUG 2025

SC-2, 10 JUL 2025 to 07 AUG 2025

ABILENE, TEXAS

Orig-B 15AUG19

32°25'N-99°41'W

ABILENE RGNL (ABI)
LOC RWY 17R

ABILENE, TEXAS

AL-1 (FAA)

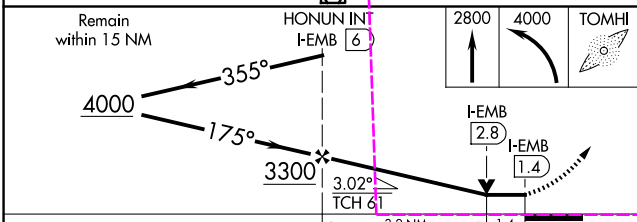
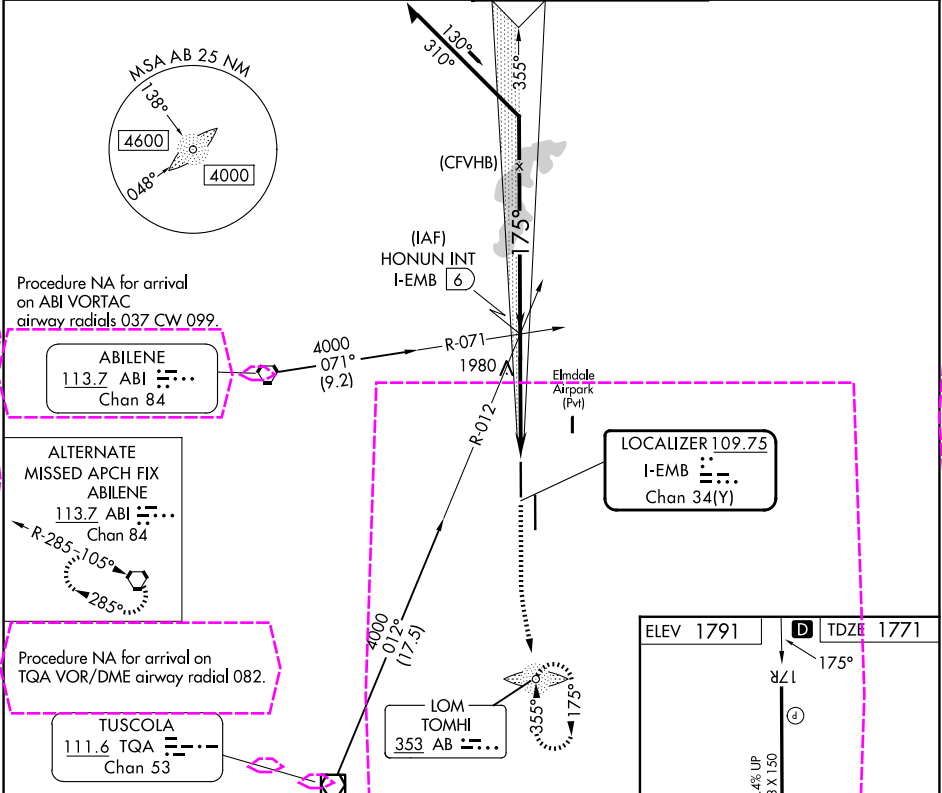
25219

LOC/DME I-EMB 109.75 Chan 34 (Y)	APP CRS 175°	Rwy Ldg TDZE 1771 Apt Elev 1791
--	------------------------	---

LOC RWY 17R
ABILENE RGNL (ABI)

ADF required for missed approach.		MISSED APPROACH: Climb to 2800 then climbing left turn to 4000 direct TOMHI LOM and hold.
-----------------------------------	--	---

ATIS 118.25	ABILENE APP CON 125.0 338.3 (EAST) 127.2 282.3 (WEST)	ABILENE TOWER 120.1 257.8	GND CON 121.7 348.6
-----------------------	---	-------------------------------------	-------------------------------



ELEV 1791	D	TDZE 1771
17R	175°	
35L	175°	
35R	175°	
REIL Rwy 35L		
HIRL Rwy 17L-35R and 17R-35L		
FAF to MAP 4.6 NM		
CIRCLING	2300-1	2320-1
	509 (600-1)	529 (600-1)
	2420-1 3/4	2460-2
	629 (700-1 3/4)	669 (700-2)
	2620-3	829 (900-3)
	Knots	60 90 120 150 180
	Min:Sec	4:36 3:04 2:18 1:50 1:32

ABILENE, TEXAS
Orig-B 15AUG19

32°25'N-99°41'W

ABILENE RGNL (ABI)
LOC RWY 17R