

ABILENE RGNL (ABI)  
ILS or LOC RWY 35R

ABILENE, TEXAS

AL-1 (FAA)

25219

LOC/DME I-ABI <b>110.3</b> Chan <b>40</b>	APP CRS <b>355°</b>	Rwy Ldg <b>7198</b> TDZE <b>1776</b> Apt Elev <b>1791</b>
---	------------------------	---

# ILS or LOC RWY 35R

ABILENE RGNL (ABI)

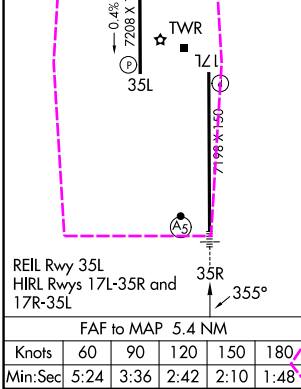
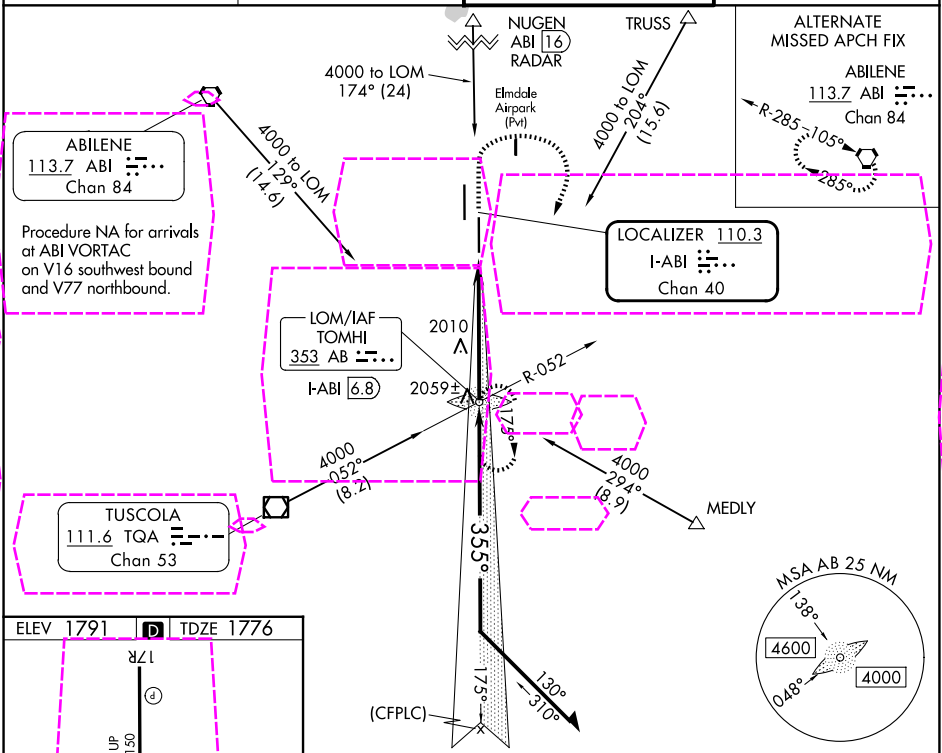
ADF required. RADAR required for procedure entry at NUGEN.

▼ For inop ALS, increase S-ILS 35R Cat E visibility to RVR 4000, and S-LOC 35R Cat C/D/E visibility to 1 $\frac{1}{2}$  SM.  
▲ \*\* RVR 1800 authorized with use of FD or AP or HUD to DA.

MALSR  
A5

MISSED APPROACH: Climb to 3300 then climbing right turn to 4000 direct TOMHI LOM/INT/I-ABI 6.8 DME and hold.

ATIS <b>118.25</b>	ABILENE APP CON <b>125.0 338.3 (EAST)</b> <b>127.2 282.3 (WEST)</b>	ABILENE TOWER <b>120.1 257.8</b>	GND CON <b>121.7 348.6</b>
-----------------------	---	-------------------------------------	-------------------------------



3300		4000		TOMHI		TOMHI LOM/INT I-ABI 6.8		Remain within 15 NM	
*LOC only.									
		*I-ABI 1.4		*I-ABI 2.7		3573		175°	
								4000	
								355°	
								3600	
		1.3		4.1 NM				GS 3.00° TCH 58	
CATEGORY		A		B		C		D	
S-ILS 35R**				1976/24		200 (200-½)		E	
S-LOC 35R		2260/24		484 (500-½)		2260/50		484 (500-1)	
CIRCLING		2300-1 509 (600-1)		2320-1 529 (600-1)		2420-1¾ 629 (700-1¾)		2460-2 669 (700-2)	
								2620-3 829 (900-3)	

ABILENE, TEXAS  
Amdt 7B 10OCT19

32°25'N-99°41'W

ABILENE RGNL (ABI)  
ILS or LOC RWY 35R

SC-2, 07 AUG 2025 to 04 SEP 2025

SC-2, 07 AUG 2025 to 04 SEP 2025