

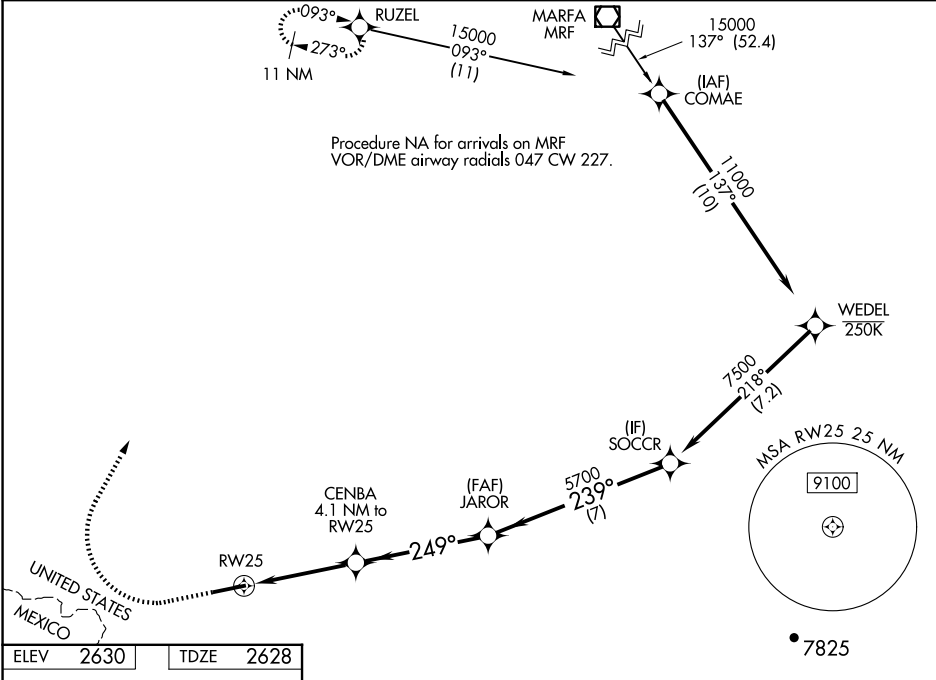
WAAS CH <b>72456</b> <b>W25B</b>	APP CRS <b>249°</b>	Rwy Idg TDZE Apt Elev	<b>6501</b> <b>2628</b> <b>2630</b>
--	------------------------	-----------------------------	---

RNAV (GPS) Y RWY 25

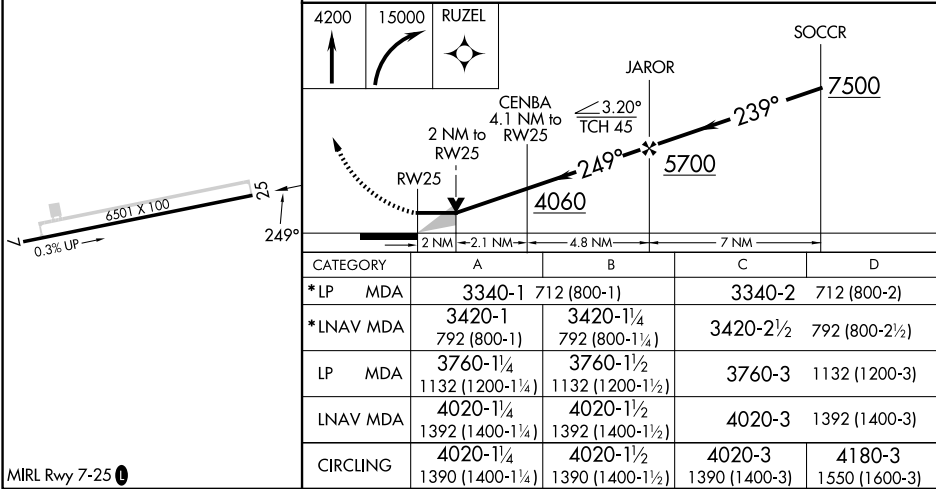
LAJITAS INTL (T89)

RNP APCH - GPS.	MISSED APPROACH: Climb to 4200 then climbing right turn to 15000 direct RUZEL and hold, continue climb-in-hold to 15000. *MISSED APPROACH requires minimum climb of 237 feet per NM to 5800.
<div><div></div><div></div></div> Circling NA south of Rwy 7-25. When local altimeter setting not received, procedure NA.	

AWOS-3 <b>119.275</b>	ALBUQUERQUE CENTER <b>135.875 292.15</b>	UNICOM <b>122.7 (CTAF) 0</b>
--------------------------	---	---------------------------------



ELEV 2630	TDZE 2628
-----------	-----------



MIRL Rwy 7-25 0

LAJITAS, TEXAS  
Orig 26DEC24

LAJITAS INTL (T89)

29°17'N-103°41'W

RNAV (GPS) Y RWY 25

SC-3, 07 AUG 2025 to 04 SEP 2025

SC-3, 07 AUG 2025 to 04 SEP 2025