

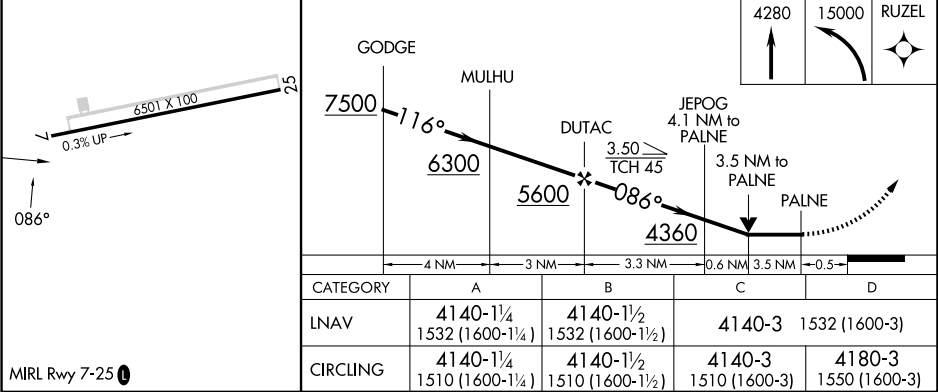
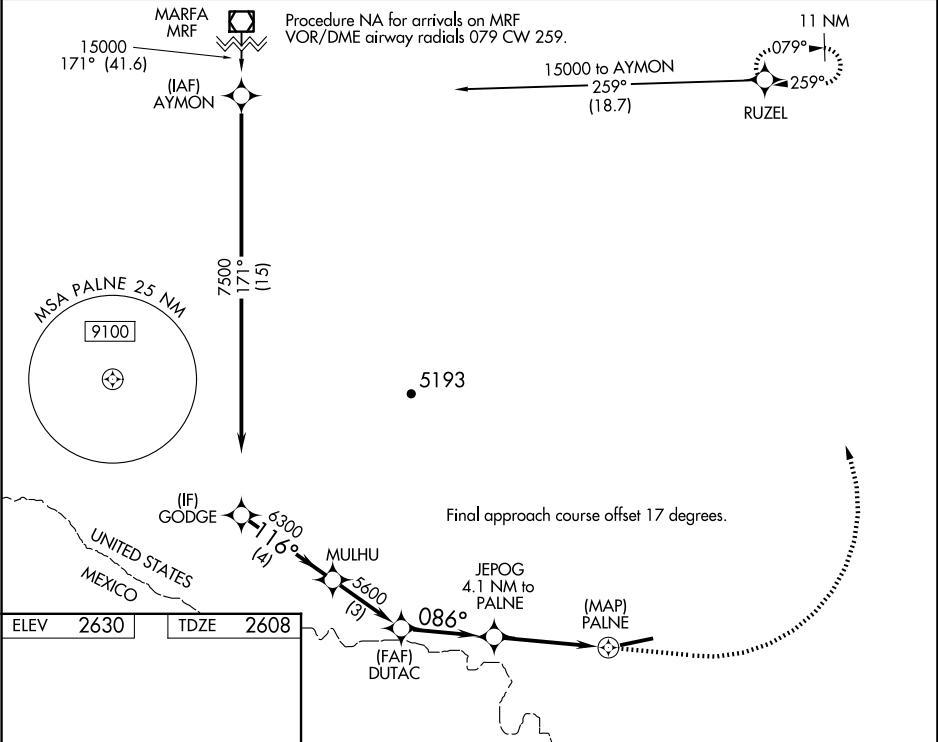
| | | |
|---------|----------|------|
| APP CRS | Rwy Idg | 6501 |
| 086° | TDZE | 2608 |
| | Apt Elev | 2630 |

RNAV (GPS) RWY 7

LAJITAS INTL (T89)

| | |
|--|---|
| RNP APCH - GPS. | MISSED APPROACH: Climb to 4280 then climbing left turn to 15000 direct RUZEL and hold, continue climb in hold to 15000. |
| ▼ Rwy 7 helicopter visibility reduction below ¾ SM NA. When local altimeter setting not received, use Presidio Lely Intl altimeter setting and increase all MDA 140 feet. VDP NA when using Presidio Lely Intl altimeter setting. Circling NA south of Rwy 7-25. | |

| | | |
|-------------------|--------------------------------------|--------------------------|
| AWOS-3 119.275 | ALBUQUERQUE CENTER 135.875 292.15 | UNICOM 122.7 (CTAF) 0 |
|-------------------|--------------------------------------|--------------------------|



MIRL Rwy 7-25 0