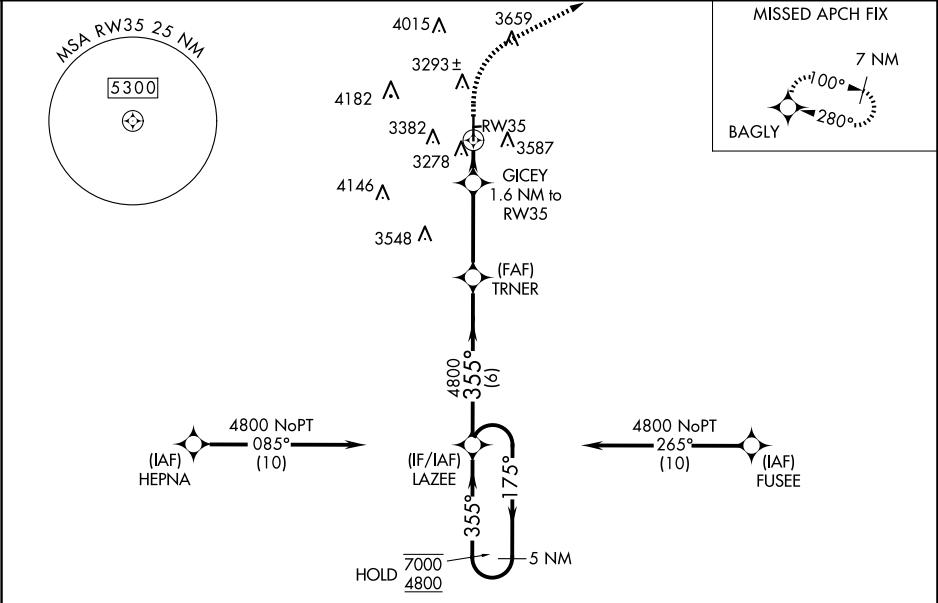


WAAS CH 91519 W35A	APP CRS 355°	Rwy Idg 4759 TDZE 3172 Apt Elev 3176
--	------------------------	---

RNAV (GPS) RWY 35
LUBBOCK EXEC AIRPARK (F82)

RNP APCH - GPS.	MISSED APPROACH: Climb to 3900 then climbing right turn to 6700 direct BAGLY and hold, continue climb-in-hold to 6700. *Missed approach requires minimum climb of 241 feet per NM to 4400.
▼ ▲ NA Use LBB altimeter setting. Helicopter visibility reduction below ¾ SM NA. Circling NA east of Rwy 17-35. Circling Rwy 17, NA at night. Baro-VNAV NA.	

LBB ASOS 125.3 270.275	LUBBOCK APP CON 119.2 351.8	UNICOM 122.8 (CTAF)
----------------------------------	---------------------------------------	-------------------------------



ELEV 3176	TDZE 3172	3900	6700	BAGLY	TRNER	LAZEE	5 NM Holding Pattern
		GICEY 1.6 NM to RW35		RW35		3720	
		355°		355°		355°	
		1.6 NM		3.4 NM		6 NM	
		3.4 NM		6 NM		6 NM	
CATEGORY	A	B	C	D			
LPV DA	3462-7/8 290 (300-7/8)					NA	
LNAV/VNAV DA	3469-7/8 297 (300-7/8)		3573-1 401 (400-1 1/8)		NA		
LNAV/VNAV DA*	NA		NA		3469-7/8 297 (300-7/8) NA		
LNAV MDA	3580-1 408 (500-1)		3720-1 548 (600-1 1/8)		NA		
LNAV MDA*	NA		NA		3580-1 408 (500-1 1/8) NA		
CIRCLING	3700-1 524 (600-1)		3740-1 564 (600-1)		4580-3 1404 (1500-3) NA		