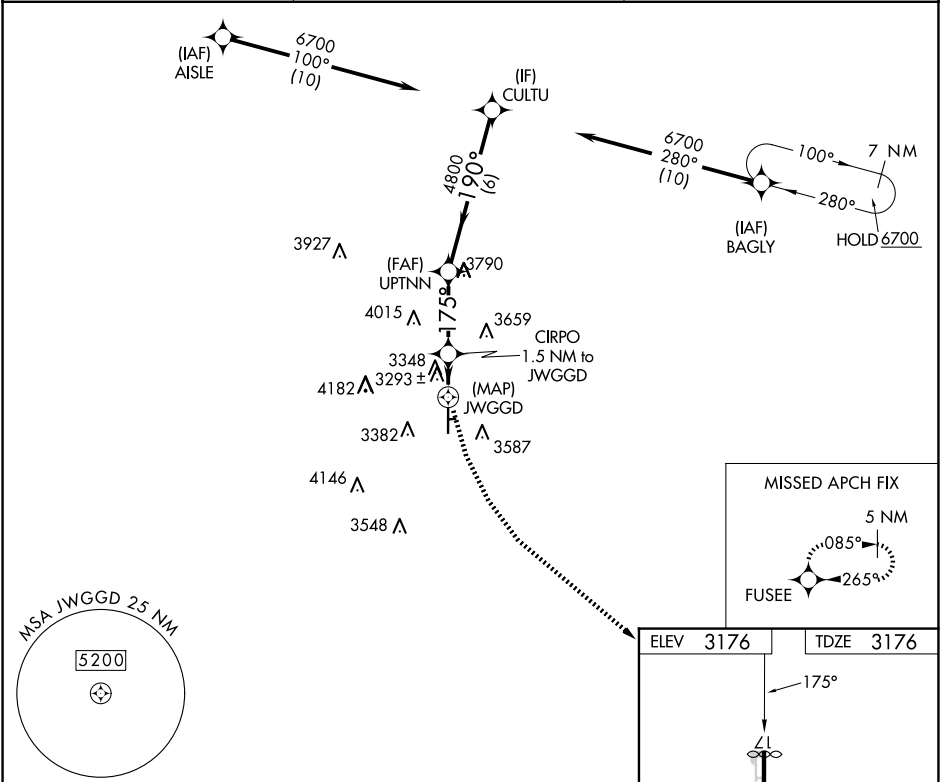


APP CRS	Rwy Idg	5086
175°	TDZE	3176
	Apt Elev	3176

RNAV (GPS) RWY 17

LUBBOCK EXEC AIRPARK (F82)

RNP APCH - GPS.		MISSED APPROACH: Climbing left turn to 5000 direct FUSEE and hold.
▼ ▲ NA Use LBB altimeter setting. Rwy 17 helicopter visibility reduction below 1 SM NA. Circling NA east of Rwy 17-35.		
LBB ASOS 125.3 270.275	LUBBOCK APP CON 119.2 351.8	UNICOM 122.8 (CTAF)



CULTU		UPTNN	CIRPO 1.5 NM to JWGGD	5000	FUSEE
6700		4800	3860		
170°		175°			
6 NM		3 NM	1.5 NM	0.4	
CATEGORY	A	B	C	D	
RNAV MDA	3640-1	464 (500-1)	3640-1 3/8 464 (500-1 3/8)	NA	
CIRCLING	3700-1 524 (600-1)	3740-1 564 (600-1)	4580-3 1404 (1500-3)	NA	

HIRL Rwy 17-35

Diagram of runway 17-35 showing dimensions: 1524 X 110, 5144 X 70, and 25. The runway is oriented 175° and has a 0.5% UP slope. The elevation at the end of the runway is 35.