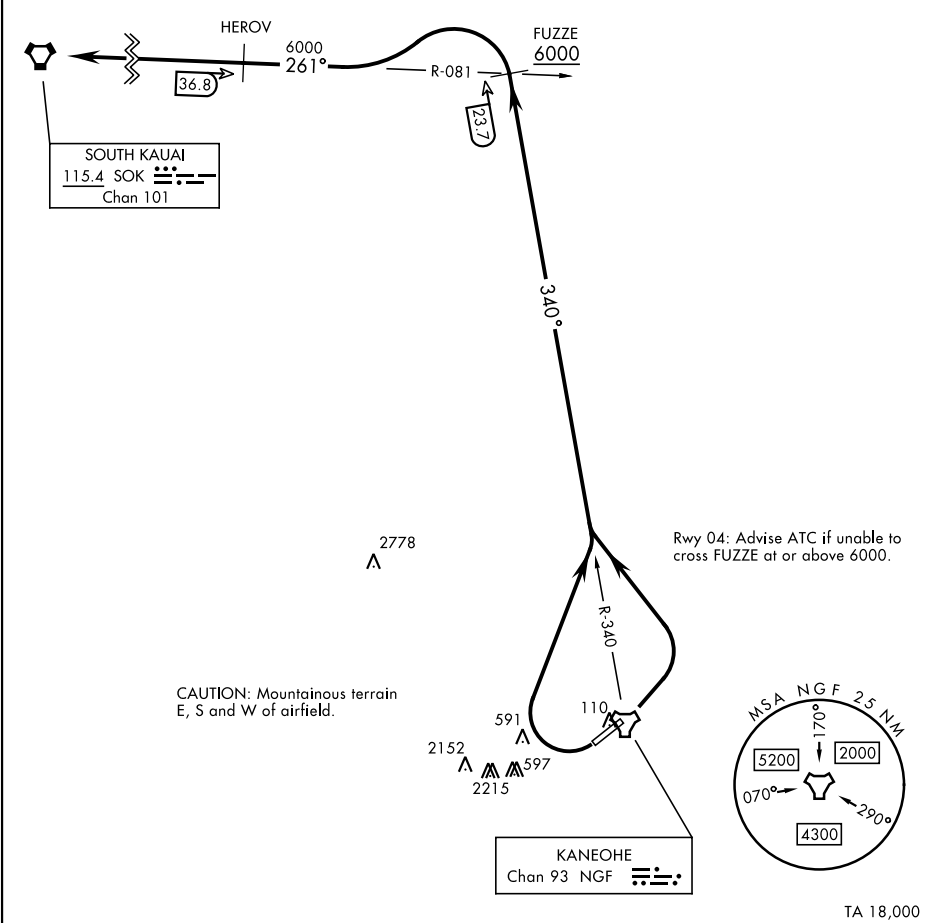


ATIS 284.5	Rwy	Knots	60	120	180	240	300	360
CLNC DEL	04†	V/V(fpm)	250	500	750	1000	1250	1500
294.7	22*	V/V(fpm)	975	1950	2925	3900	4875	5850
GND CON								
338.35								

KANEEOHE TOWER
120.7 (CTAF) 360.2
KANEEOHE APP/DEP CON
125.0 263.5

† ATC Climb Rate to 6000
* Minimum Climb Rate to 3900



DEPARTURE ROUTE DESCRIPTION

TAKEOFF RWY 4: Turn left to intercept NGF TACAN R-340 to FUZZE, then intercept SOK VORTAC R-081 to SOK. Cross FUZZE at or above 6000.

TAKEOFF RWY 22: Turn right as soon as practicable to intercept NGF TACAN R-340 to FUZZE, then intercept SOK VORTAC R-081 to SOK.

PAC, 07 AUG 2025 to 02 OCT 2025

PAC, 07 AUG 2025 to 02 OCT 2025