

HI-TACAN Y RWY 22

TACAN NGF Chan 93	APCH CRS 206°	Rwy Idg 7771 TDZE 23 Arpt Elev 23
-----------------------------	-------------------------	--

[USN]

KANE OHE BAY MCAS (PHNG)

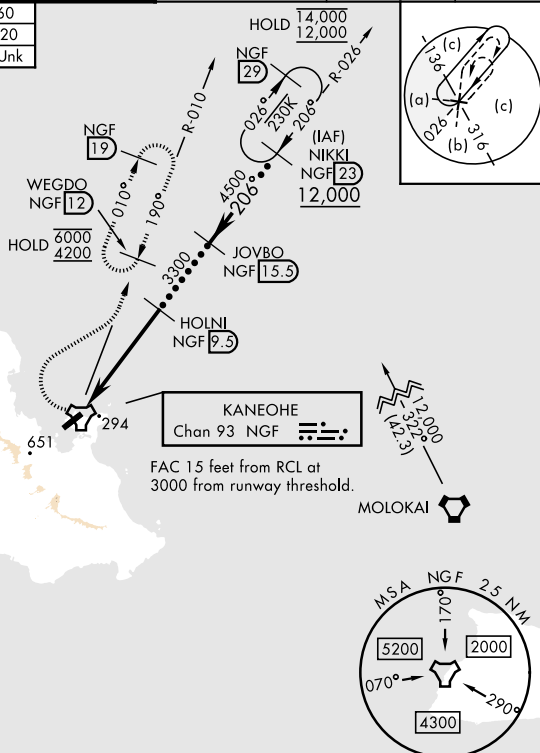
T *Circling not authorized SE of Rwy 4-22,
CAT D remain within 2.8 NM.

MISSED APPROACH: Climbing right turn to 4200, intercept NGF TACAN R-010 and proceed direct WEGDO and hold.

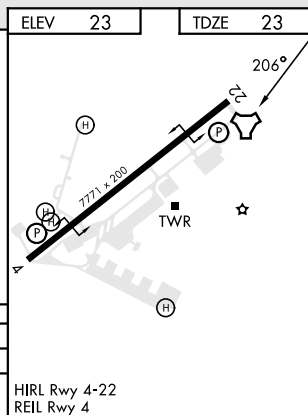
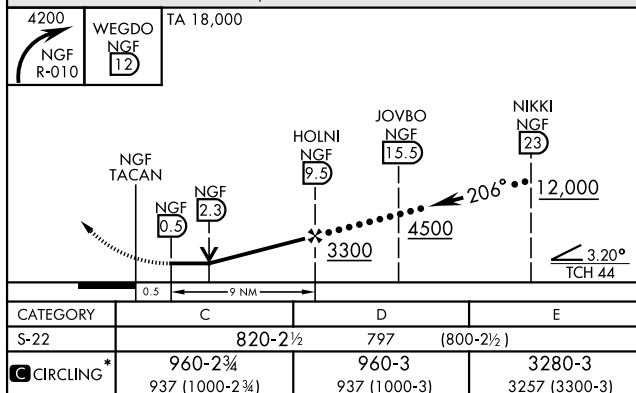
ATIS 284.5	APP/DEP CON 125.0 263.5	TOWER 120.7(CTAF) 360.2	GND CON 338.35	CLNC DEL 294.7	ASR/PAR
----------------------	-----------------------------------	-----------------------------------	--------------------------	--------------------------	---------

Knots	60	120	180	240	300	360
V/V(fpm)	520	1040	1560	2080	2600	3120
Min climb of 520 ft/NM to 3600 - Controlling Obstacle Unk						

CAUTION: Mountainous terrain E. S. and W of afd.



EMERG SAFE ALT 100 NM 12,200



MOKAPU POINT, OAHU |, HAWAII

21°27'N-157°46'W

KANE OHE BAY MCAS (PHNG)

Amdt 2 31OCT24

HI-TACAN Y RWY 22

PAC, 07 AUG 2025 to 02 OCT 2025