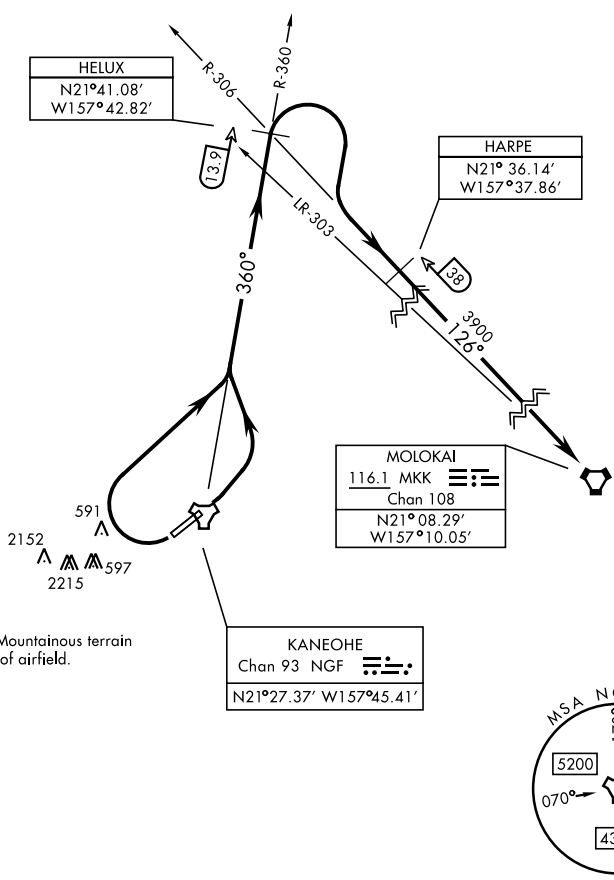


ATIS 284.5	Rwy	Knots	60	120	180	240	300	360
CLNC DEL	22	V/V(fpm)	975	1950	2925	3900	4875	5850
294.7								
GND CON								
338.35								
Kaneohe Tower								
120.7 (CTAF) 360.2								
Kaneohe APP/DEP CON								
125.0 263.5								

Minimum Climb Rate to 3900



CAUTION: Mountainous terrain
E, S and W of airfield.

TA 18,000

DEPARTURE ROUTE DESCRIPTION

- TAKEOFF RWY 4: Turn left to intercept NGF TACAN R-360 to HELUX, then intercept MKK VORTAC R-306 to MKK.
- TAKEOFF RWY 22: Turn right as soon as practicable to intercept NGF TACAN R-360 to HELUX, then intercept MKK VORTAC R-306 to MKK.

PAC, 07 AUG 2025 to 02 OCT 2025

PAC, 07 AUG 2025 to 02 OCT 2025