

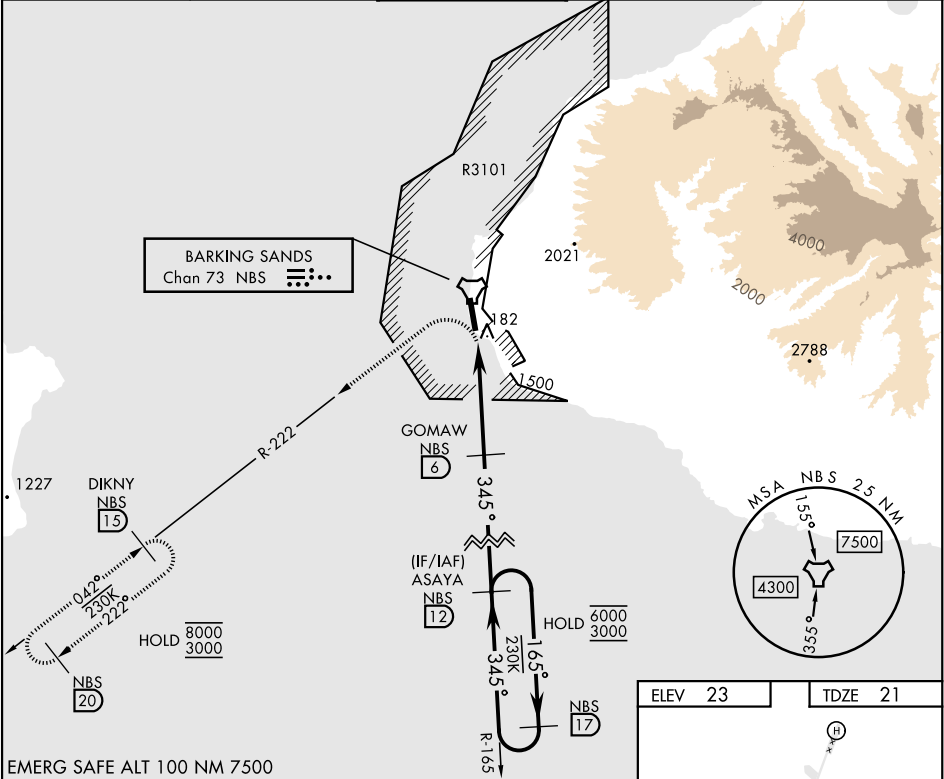
TACAN Y RWY 34

TACAN Chan <b>73</b>	NBS <b>345°</b>	APCH CRS <b>345°</b>	Rwy Idg TDZE Arpt Elev	<b>6002</b> <b>21</b> <b>23</b>
-------------------------	--------------------	-------------------------	------------------------------	---------------------------------------

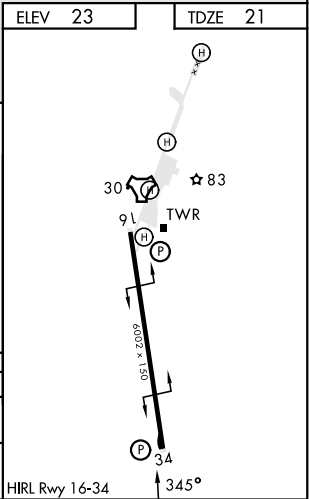
[USN]

BARKING SANDS PMRF (PHBK)

*Circling not authorized E of Rwy 16-34.			MISSED APPROACH: Climbing left turn to 3000 on heading 177° and NBS TACAN R-222 to DIKNY and hold.	
ATIS ★ <b>128.0</b>	HCF APP <b>126.5 269.4</b>	TOWER ★ <b>126.2 360.2</b>	GND CON ★ <b>124.2 340.2</b>	UNICOM <b>122.8</b>



EMERG SAFE ALT 100 NM 7500					
3000 NBS R-222		DIKNY NBS 15			
NBS TACAN		MAPIE NBS 1.9	NBS 2.6	GOMAW NBS 6	ASAYA R-165 NBS 12
				1500	165°
				345°	345°
				2.94°	6000 3000
				TCH 40	
CATEGORY	A	B	C	D	E
S-34	460-1	439 (500-1)	460-1¼	439 (500-1¼)	
CIRCLING*	460-1 437 (500-1)	480-1 457 (500-1)	480-1½ 457 (500-1½)	580-2	557 (600-2)



TACAN Y RWY 34

PAC, 07 AUG 2025 to 02 OCT 2025

PAC, 07 AUG 2025 to 02 OCT 2025