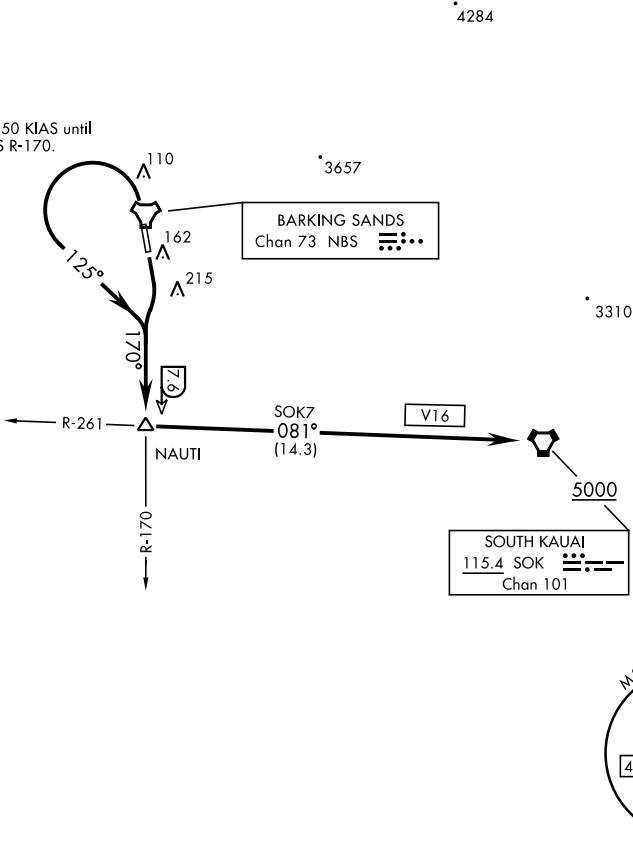


BARKING SANDS TOWER ★
126.2 360.2
HCF APP
126.5 269.4

Do not exceed 250 KIAS until
intercepting NBS R-170.



DEPARTURE ROUTE DESCRIPTION

- TAKEOFF RWY 16: Climb on heading 160°, then right turn to intercept NBS TACAN R-170 to NAUTI, then turn left to intercept SOK VORTAC R-261 to SOK. Maintain 5000 or higher as assigned.
- TAKEOFF RWY 34: Climb on heading 340°, then left turn to intercept NBS TACAN R-170 to NAUTI, then turn left to intercept SOK VORTAC R-261 to SOK. Maintain 5000 or higher as assigned.