

RNAV (GPS) RWY 34

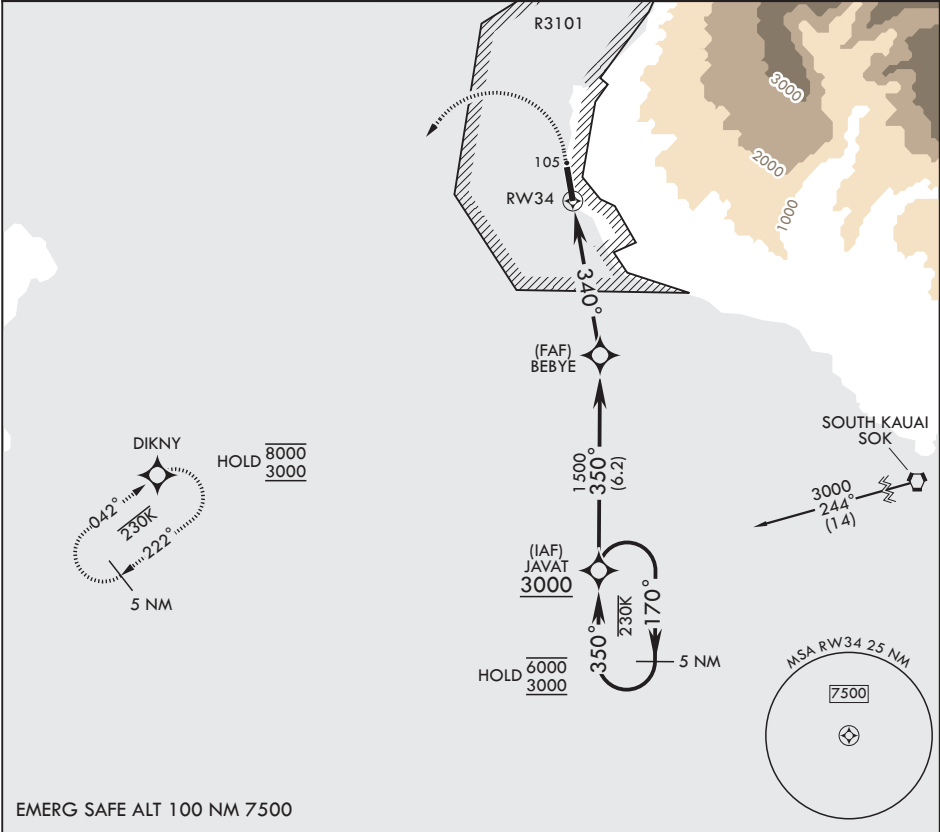
APCH CRS	Rwy Idg	6002
340°	TDZE	21
	Arprt Elev	23

- (USN)

BARKING SANDS PMRF (PHBK)

RNP APCH	MISSED APPROACH: Climb to 550 then climbing left turn to 3000 direct DIKNY and hold.
▼ * Circling not authorized E of Rwy 16-34.	

ATIS★ 128.0	HCF CENTER 126.5 269.4	TOWER★ 126.2 360.2	GND CON★ 124.2 340.2	UNICOM 122.8
----------------	---------------------------	-----------------------	-------------------------	-----------------



EMERG SAFE ALT 100 NM 7500

550

3000

DIKNY

↑

↷

⬡

1.3 NM to RW34

340°

≤ 3.02°

TCH 40

4.5 NM

BEBYE

340°

1500

JAVAT

170°

6000

350°

3000

ELEV 23

TDZE 21

91

BCN FWR

5002 x 150

34

340°

CATEGORY	A		B		C		D	
LNAV MDA	460-1	439	(500-1)		460-1¼	439	(500-1¼)	
CIRCLING*	460-1		480-1		480-1½		580-2	
	437 (500-1)		457 (500-1)		457 (500-1½)		557 (600-2)	

HIRL all rwys

RNAV (GPS) RWY 34

PAC, 07 AUG 2025 to 02 OCT 2025

PAC, 07 AUG 2025 to 02 OCT 2025