

APCH CRS	Rwy Idg	6002
160°	TDZE	23
	Arprt Elev	23

- (USN)

BARKING SANDS PMRF (PHBK)

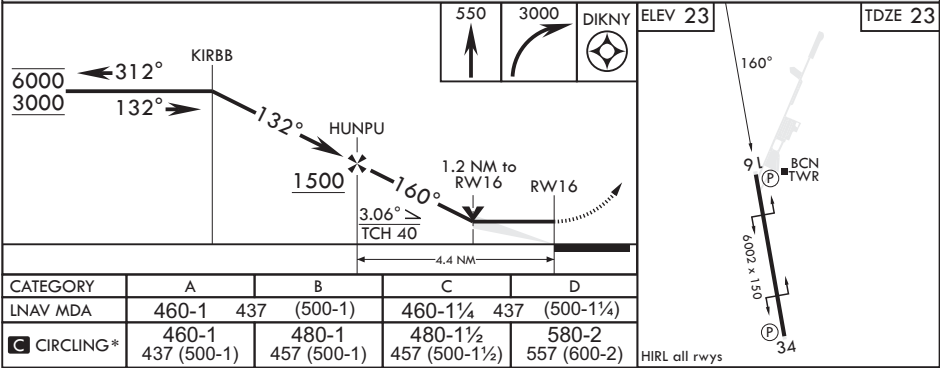
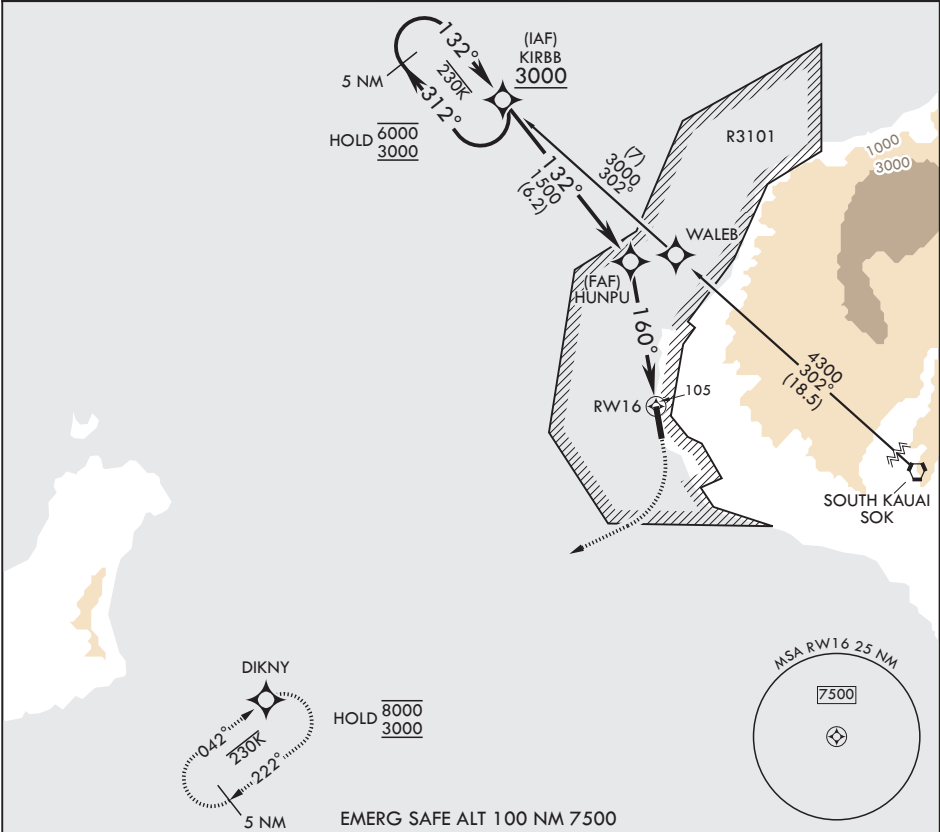
RNAV (GPS) RWY 16

RNP APCH

MISSED APPROACH: Climb to 550 then climbing right turn to 3000 direct DIKNY and hold.

* Circling not authorized E of Rwy 16-34.

ATIS★ 128.0	HCF CENTER 126.5 269.4	TOWER★ 126.2 360.2	GND CON★ 124.2 340.2	UNICOM 122.8
----------------	---------------------------	-----------------------	-------------------------	-----------------



RNAV (GPS) RWY 16

PAC, 07 AUG 2025 to 02 OCT 2025

PAC, 07 AUG 2025 to 02 OCT 2025