

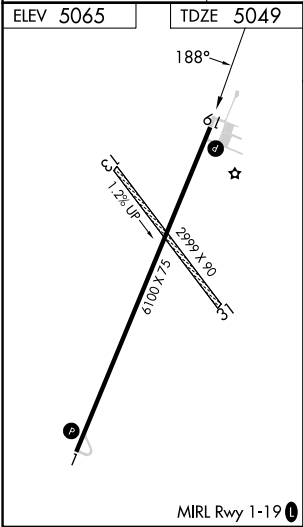
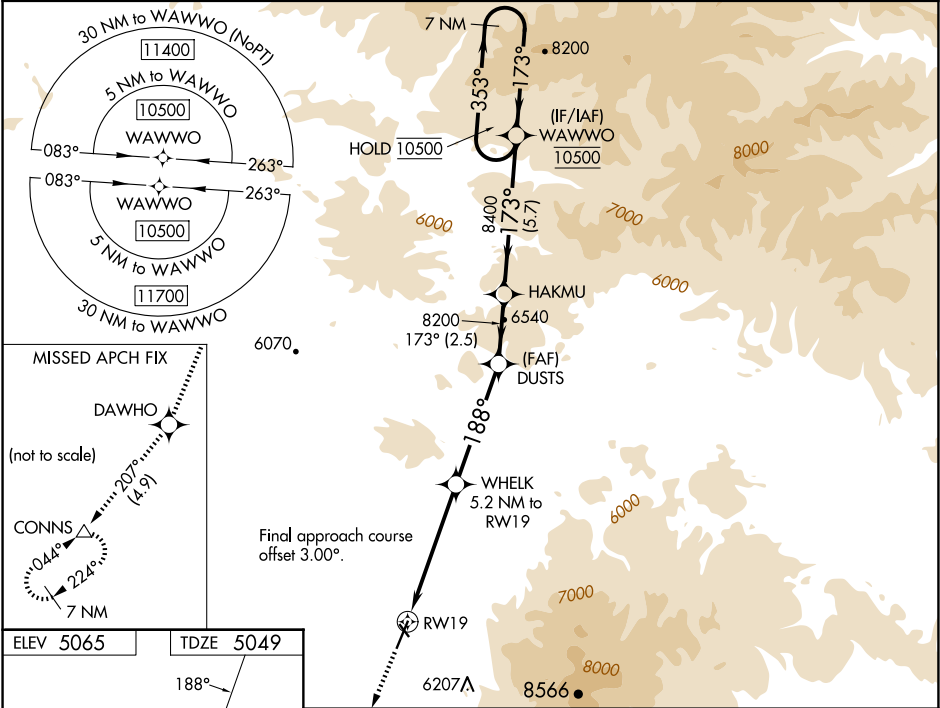
WAAS CH <b>65648</b> <b>W19A</b>	APP CRS <b>188°</b>	Rwy Idg <b>6100</b> TDZE <b>5049</b> Apt Elev <b>5065</b>
--	------------------------	---

RNAV (GPS) RWY 19

WHITE SULPHUR SPRINGS (7S6)

RNP APCH - GPS.	MISSED APPROACH: Climb to 5700 then climb to 10000 direct DAWHO and on track 207° to CONNS and hold, continue climb-in-hold to 10000.
⚠ For uncompensated Baro-VNAV systems, LNAV/VNAV NA below -25°C or above 54°C. Rwy 19 helicopter visibility reduction below ¾ SM NA. Circling NA to Rwys 13 and 31. Circling NA for Cats C and D east of Rwy 1-19. Circling NA for all Cats east of Rwy 1-19 at night.	

AWOS-3PT <b>118.525</b>	SALT LAKE CENTER <b>133.4 285.4</b>	CTAF <b>122.9</b>
----------------------------	--	----------------------



5700	10000	DAWHO	tr 207°	CONNS	WAWWO	7 NM Holding Pattern
		WHEEL 5.2 NM to RW19	DUSTS	HAKMU		
		2.5 NM to RW19	8200	8400		
		188°	6740	8200		
		2.5 NM	2.7 NM	4.6 NM	2.5 NM	5.7 NM
CATEGORY	A	B	C	D		
LPV DA	5415-1	366 (400-1)				
LNAV/VNAV DA	5495-1 3/8	446 (500-1 3/8)				
LNAV MDA	5880-1 831 (900-1)	5880-1 1/4 831 (900-1 1/4)	5880-2 1/2 831 (900-2 1/2)	5920-2 3/4 855 (900-2 3/4)		
CIRCLING	5880-1 1/4 815 (900-1 1/4)	5920-1 1/4 855 (900-1 1/4)	5920-2 1/2 855 (900-2 1/2)	5920-2 3/4 855 (900-2 3/4)		